



PAYNELL COURT, LAWN TERRACE, BLACKHEATH, SE3 9LN
OIEO £400,000 LEASEHOLD

A VERY GOOD SIZED THREE BEDROOM GROUND AND FIRST FLOOR MAISONETTE WITH A PRIVATE BALCONY SITUATED IN THIS FANTASTIC LOCATION 100 YARDS FROM BLACKHEATH VILLAGE AND STATION.

Blackheath | 0208 8520999 | blackheath@winkworth.co.uk



DESCRIPTION:

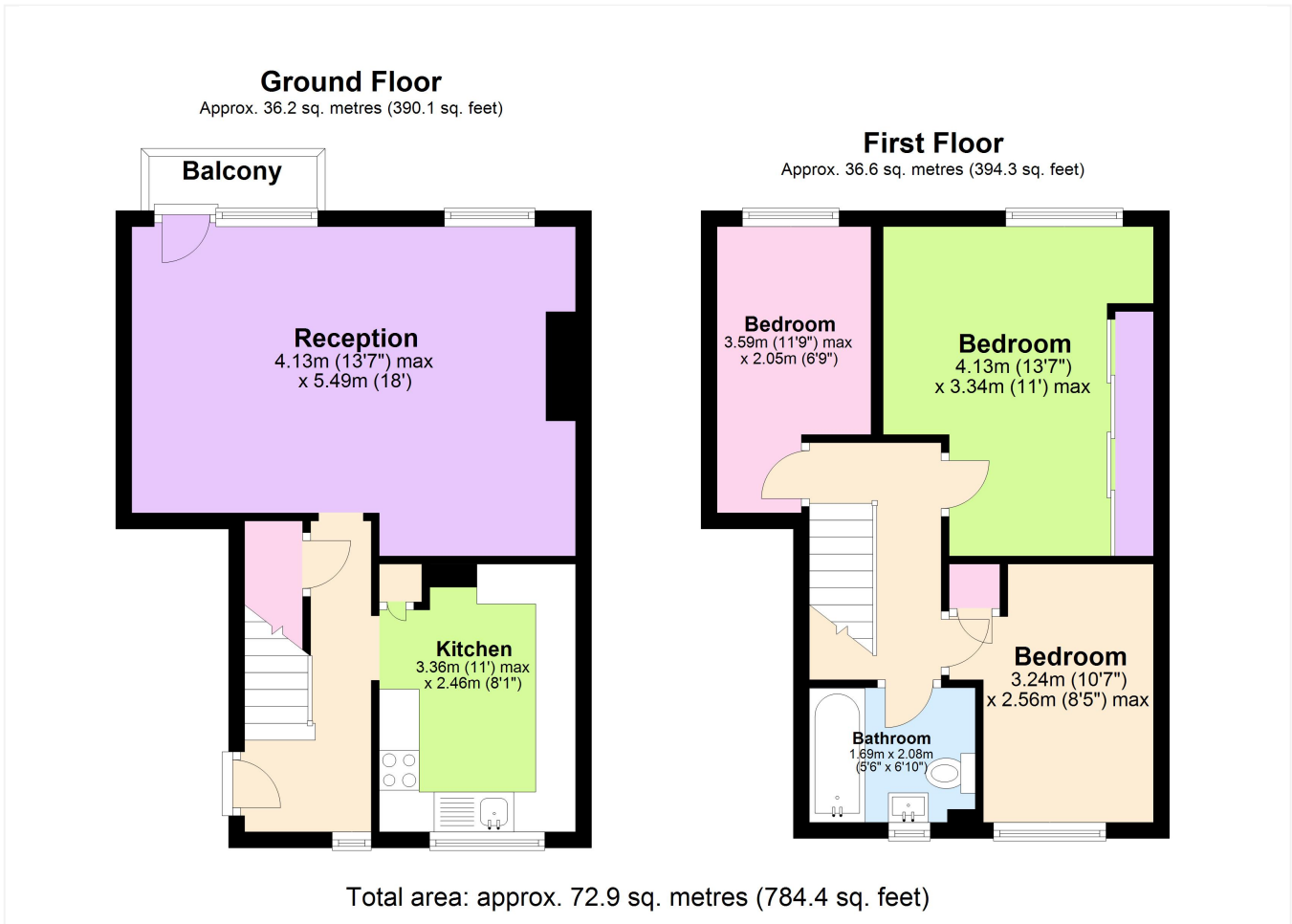
A very good sized three bedroom ground and first floor maisonette with a private balcony situated in this fantastic location 100 yards from Blackheath Village and Station.

The property is in good decorative order with double glazed windows and gas fired central heating.

The accommodation briefly comprises of a large (13'7x18) living room with a south facing balcony and a good size kitchen to the ground floor. Upstairs are three bedrooms, the largest is a great size (13'7x11) as well as a family bathroom.

The property is sold chain free and your earliest viewing is essential. Virtual tours may be seen at winkworth.co.uk

Lawn Terrace is an incredibly convenient address located in the heart of Blackheath Village with its array of boutique shops, restaurants and bars and is just 100 yards from Blackheath Station.



This floorplan is for illustration purposes only and is not to scale. The position and size of doors, windows, appliances and other features are approximate.

Energy Efficiency Rating		Current	Potential
Very energy efficient - lower running costs	A		
(92-101)	B		
(82-91)	C		
(69-81)	D	69	78
(55-68)	E		
(39-54)	F		
(21-38)	G		
Not energy efficient - higher running costs			
England, Scotland & Wales	EU Directive 2002/91/EC		

Blackheath | 0208 8520999 | blackheath@winkworth.co.uk

Winkworth

winkworth.co.uk

See things differently

Winkworth wishes to inform prospective buyers and tenants that these particulars are a guide and act as information only. All our details are given in good faith and believed to be correct at the time of printing but they don't form part of an offer or contract. No Winkworth employee has authority to make or give any representation or warranty in relation to this property. All fixtures and fittings, whether fitted or not are deemed removable by the vendor unless stated otherwise and room sizes are measured between internal wall surfaces, including furnishings.