



MARLBOROUGH ROAD, W4
£2,100 PER MONTH PART FURNISHED

BEAUTIFUL TWO BED FLAT ON PRIME CHISWICK STREET

Chiswick | 020 8994 7096 | chiswick@winkworth.co.uk

Winkworth

for every step...

winkworth.co.uk



DESCRIPTION:

NEW INSTRUCTION* Council Tax Band: D

Winkworth Chiswick is proud to offer this refurbished period conversion, benefitting from the perfect mix of original character and modern fittings, on one of Chiswick's most prime roads.

The property boasts a bright open plan kitchen-reception room, a generous master bedroom, modern bathroom, spacious second bedroom and spacious hallway with plenty of storage.

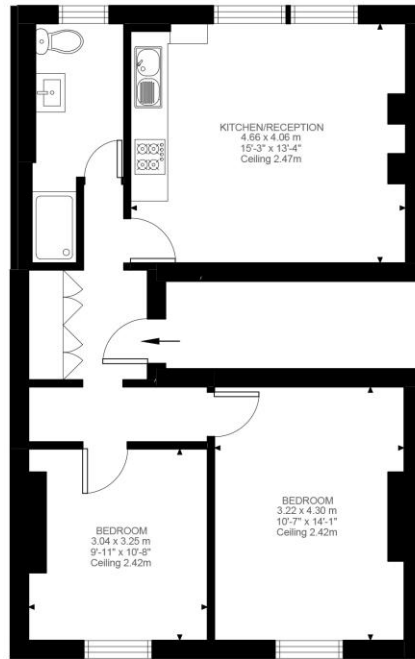
The location is unparalleled with easy access to Chiswick Business Park and the abundance of shops, boutiques, cafes and restaurants on Chiswick High Road.

There is also a raft of transport links nearby including Gunnersbury Tube Station, Chiswick Park Tube Station, South Acton Overground, excellent cycle routes and access in and out of London via the A4/M4.

ACCOMMODATION

2 Bedrooms,
1 Reception Room,
1 Bathroom,
Residents Parking,
Part Furnished





First Floor
624 ft²

Marlborough Road, W4
Approximate Gross Internal Area
57.99 SQ.M / 624 SQ.FT

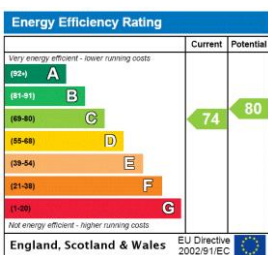
Illustration for identification purposes only. Not to scale.
Floor Plan Drawn According To RICS Guidelines.

This floorplan is for illustration purposes only and is not to scale. The position and size of doors, windows, appliances and other features are approximate.

Deposit: £2,423.08

Council Tax Band:

Where no figures are shown, we have been unable to ascertain the information. All figures that are shown were correct at the time of printing.



Chiswick | 020 8994 7096 | chiswick@winkworth.co.uk



for every step...

winkworth.co.uk

Winkworth wishes to inform prospective buyers and tenants that these particulars are a guide and act as information only. All our details are given in good faith and believed to be correct at the time of printing but they don't form part of an offer or contract. No Winkworth employee has authority to make or give any representation or warranty in relation to this property. All fixtures and fittings, whether fitted or not are deemed removable by the vendor unless stated otherwise and room sizes are measured between internal wall surfaces, including furnishings.