

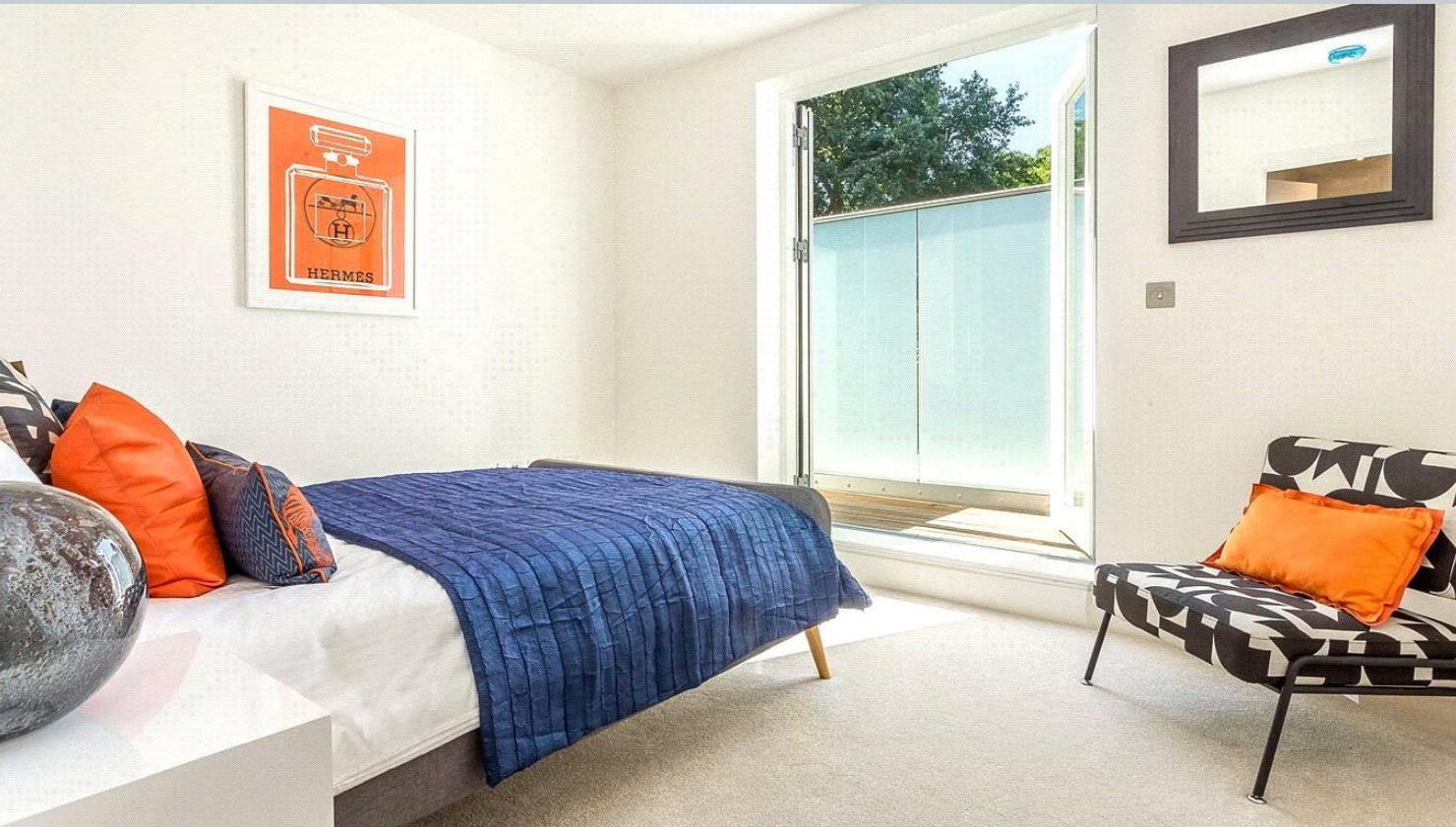


A superb two bedroom apartment forming part of this stylish modern development in Putney. Finished to a very high standard, accommodation includes a bright and spacious kitchen/living room with fitted units and integrated Siemens appliances. Floor to ceiling windows provide plenty of light. The main bedroom benefits from French doors opening onto a private terrace. There is an additional second bedroom/study and a modern bathroom complete with 'Vitra' fittings. There is also a purpose-built communal bicycle store, video entry phone and an electrical security gate to the front of the building. Sold with no onward chain.

The property is located very close to the corner of Keswick Road and West Hill and is therefore within 300 meters of East Putney Tube Station (District Line), there are numerous buses with swift access to Putney, Clapham Junction and beyond. Also close at hand is Putney Mainline Station (Zone 2/3).

- Modern Development
- Kitchen/Living Room
- Two Bedrooms
- Modern Bathroom
- Private Terrace
- High End Finishes
- Chain Free

West Hill, Putney, SW15 2UE



Energy Efficiency Rating		Current	Potential
Very energy efficient - lower running costs			
(92+)	A		
(81-91)	B	85	85
(69-80)	C		
(55-68)	D		
(39-54)	E		
(21-38)	F		
(1-20)	G		
Not energy efficient - higher running costs			
England, Scotland & Wales		EU Directive 2002/91/EC	

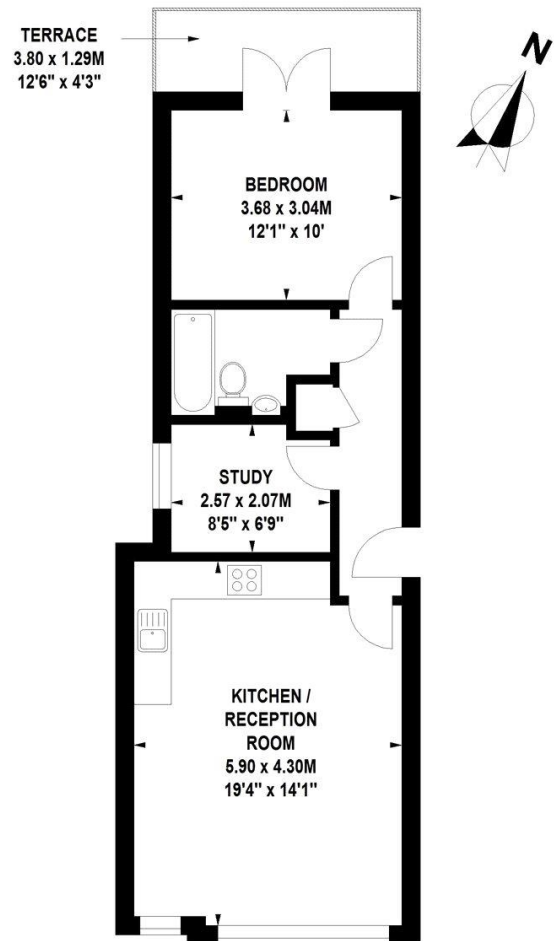
Leasehold

Internal area
 Approximate gross internal area:
Total 560 sq ft/ 52 sq m



Flat 3, West Hill, SW15

Approximate Gross Internal Area 52 sq.m / 560 sq. ft



Ground Floor

Floor Plan produced for WINKWORTH by Mays Floorplans © . Tel 020 3397 4594
Illustration for identification purposes only, not to scale
All measurements are maximum, and include wardrobes and window bays where applicable

W621 Ravensworth 01670 713330

Winkworth

Under the Property Misdescriptions Act these particulars are intended as a guide and act as information only. They give a fair overall description for the guidance of potential purchasers or tenants but do not constitute an offer or part of a contract. All details and approximate measurements are given in good faith and are believed to be correct at the time of printing, but any potential purchasers or tenants should not rely on the mis-statements or representations of fact but must satisfy themselves by inspection or otherwise as to their correctness. No employee of Winkworth has authority to make or give any representation or warranty to this property.

Southfields Office 241 Wimbledon Park Road, SW18 5RJ | Tel: 0208 877 1000 | E-mail: Southfields@winkworth.co.uk
winkworth.co.uk