



**ROTHSCHILD ROAD, W4**  
**£1,500 PER MONTH FURNISHED**

## **SPLIT-LEVEL TWO BEDROOM FLAT IN CHISWICK PARK**

**Chiswick | 020 8994 7096 | [chiswick@winkworth.co.uk](mailto:chiswick@winkworth.co.uk)**

**Winkworth**

Tenant Fees Apply: Details of fees for tenant referencing, tenancy agreement admin fees and renewal fees are available on the Winkworth website and the link can be found with the displayed rent for the property. Tenants should ensure they are fully conversant with these upfront fees and other costs that are involved at the outset of the tenancy before making an offer to rent and your local Winkworth office will provide written details upon request.

*[winkworth.co.uk](http://winkworth.co.uk)*

See things differently





## **DESCRIPTION:**

A very well-presented two bedroom flat located in this sought-after street in Chiswick Park. The accommodation is split over the first and second floor of this period conversion and has recently been redecorated and re-carpeted throughout. The property consists two double bedrooms, a bright and spacious reception room with space for dining, kitchen/breakfast room and a bathroom with a shower over the bath.

Rothschild Road is ideally located close to the shops, bars and amenities on Chiswick High Road. Transport links at Chiswick Park Underground station (District line) are a short walk away.

## **ACCOMMODATION**

2 bedrooms

Bathroom

Reception room

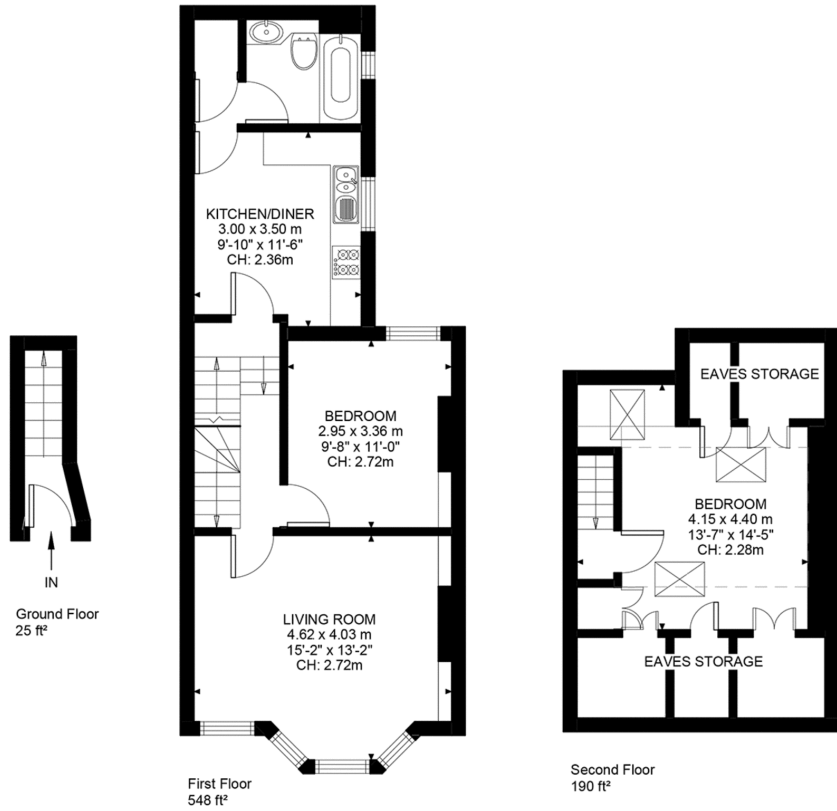
EPC: E

Council Tax band: D

763 Approx Sq Ft





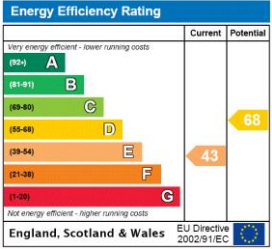


**Rothschild Road, W4**  
 Approximate Gross Internal Area  
**70.92 SQ.M / 763 SQ.FT**  
 (Excluding Eaves Storage)  
 Inc. Eaves Storage: 79.8 ft<sup>2</sup> / 858 m<sup>2</sup>

KEY: CH = Ceiling Height  
 [Restricted Head Height]

Illustration for identification purposes only. Not to scale.  
 Floor Plan Drawn According To RICS Guidelines.

This floorplan is for illustration purposes only and is not to scale. The position and size of doors, windows, appliances and other features are approximate.



Chiswick | 020 8994 7096 | chiswick@winkworth.co.uk



winkworth.co.uk

See things differently

Winkworth wishes to inform prospective buyers and tenants that these particulars are a guide and act as information only. All our details are given in good faith and believed to be correct at the time of printing but they don't form part of an offer or contract. No Winkworth employee has authority to make or give any representation or warranty in relation to this property. All fixtures and fittings, whether fitted or not are deemed removable by the vendor unless stated otherwise and room sizes are measured between internal wall surfaces, including furnishings.