



ST GEORGES SQUARE, SW1V

£750,000

SHARE OF FREEHOLD

At a glance...

- First Floor
- Share of Freehold
- Balcony
- Good Condition
- Two Double Bedrooms
- Council Tax Band: F

Winkworth

for every step...



Energy Efficiency Rating		
	Current	Potential
Very energy efficient - lower running costs		
(92+) A		
(81-91) B		
(69-80) C		
(55-68) D	70	80
(39-54) E		
(21-38) F		
(1-20) G		
Not energy efficient - higher running costs		
England, Scotland & Wales	EU Directive 2002/91/EC	

ST GEORGES SQUARE, SW1V

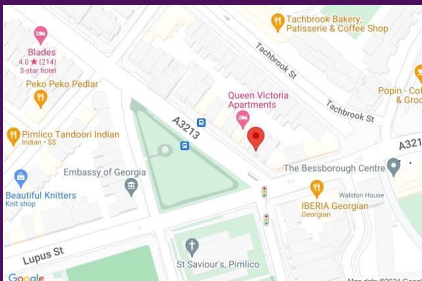
£750,000

SHARE OF FREEHOLD

This fabulous 1st floor flat offers c.620 sq ft of accommodation which briefly comprises two spacious double bedrooms with storage, a lovely, bright reception room, large eat-in kitchen with ample dining space and modern bathroom with underfloor heating.

One of the premier addresses in Pimlico, St Georges Square offers excellent green space on your doorstep and the flat comes with a share of the freehold and relatively low outgoings. This flat would make an ideal London base, 1st time buy or rental investment.

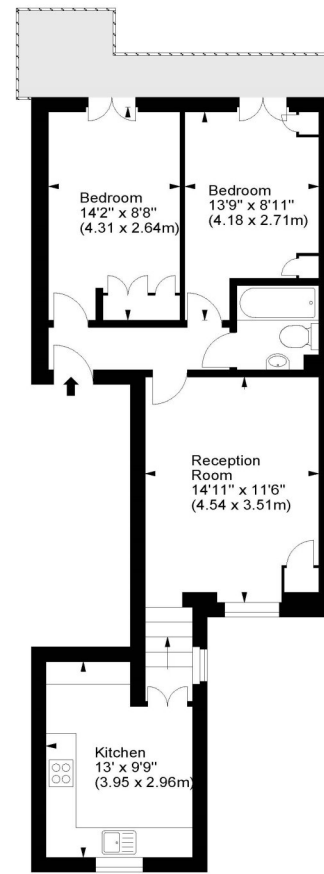
Pimlico Underground Station is incredibly close providing good access into other areas of Central London and both Vauxhall and Victoria stations are within easy reach.



winkworth wishes to inform prospective buyers and tenants that these particulars are a guide and act as information only. All our details are given in good faith and believed to be correct at the time of printing but they don't form part of an offer or contract. No Winkworth employee has authority to make or give any representation or warranty in relation to this property. All fixtures and fittings, whether fitted or not are deemed removable by the vendor unless stated otherwise and room sizes are measured between internal wall surfaces - including fireplaces.

St Georges Square, SW1

Approx. Gross Internal Area
620 Sq Ft - 57.60 Sq M



First Floor

For illustration purposes only. Not to scale.
All measurements are taken and shown at floor level.
www.r3photography.co.uk © Photography / Floor Plans / Lease Plans / EPCs



Pimlico & Westminster

020 7828 1786

pimlico@winkworth.co.uk

winkworth.co.uk/pimlico-westminster

Winkworth

for every step...