



BLOOMSBURY CLOSE, LONDON, W5

£335,000 SHARE OF FREEHOLD

Lease: 957 Years remaining

Ground Rent:

Service Charge: £1,800 per annum

(Information Supplied by the Seller)

EPC Band: D

Council Tax Band: C

Ealing & Acton | 0208 896 0123 | ealing@winkworth.co.uk

Winkworth

for every step...

winkworth.co.uk



DESCRIPTION:

This charming one bedroom purpose-built flat located on the top floor features a separate kitchen and a spacious reception room accompanied with a balcony. The well-appointed bathroom lays just opposite the large bedroom double bed. This property also comes with a garage and lift access to the property and this secure gated development further benefits from electric pedestrian and vehicle gates and CCTV. Located in a desirable area, this flat offers easy access to local amenities and transport links. Ideal for professionals, couples, or small families.



Winkworth

for every step...

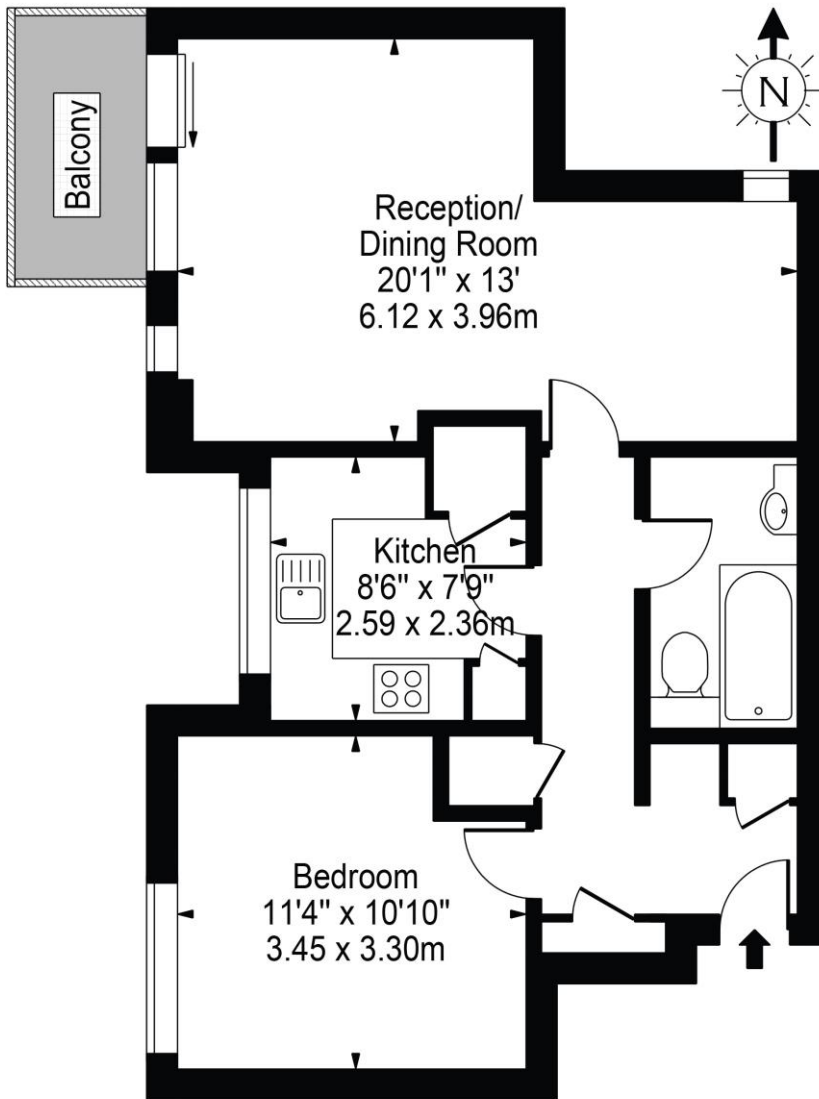


Winkworth

for every step...

Bloomsbury Close, W5

Approx. Gross Internal Area 553 Sq Ft - 51.38 Sq M

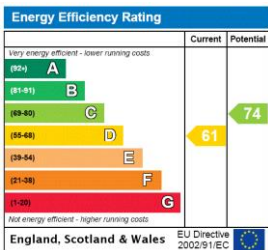


Eighth Floor

For Illustration Purposes Only - Not To Scale Floor Plan by Mira Nikolova Photography

This floor plan should be used as a general outline for guidance only and does not constitute in whole or in part an offer or contract. Any intending purchaser or lessee should satisfy themselves by inspection, searches, enquiries and full survey as to the correctness of each statement. Any areas, measurements or distances quoted are approximate and should not be used to value a property or be the basis of any sale or let.

This floorplan is for illustration purposes only and is not to scale. The position and size of doors, windows, appliances and other features are approximate.



Tenure: Share of Freehold

Term: 957 year and 2 months

Service Charge: £1800 per annum

Ground Rent: £ 0 Annually (subject to increase)

Council Tax Band:

Where no figures are shown, we have been unable to ascertain the information. All figures that are shown were correct at the time of printing.

Ealing & Acton | 0208 896 0123 | ealing@winkworth.co.uk

Winkworth

for every step...

winkworth.co.uk

Winkworth wishes to inform prospective buyers and tenants that these particulars are a guide and act as information only. All our details are given in good faith and believed to be correct at the time of printing but they don't form part of an offer or contract. No Winkworth employee has authority to make or give any representation or warranty in relation to this property. All fixtures and fittings, whether fitted or not are deemed removable by the vendor unless stated otherwise and room sizes are measured between internal wall surfaces, including furnishings.