



MARY PLACE, W11
£425,000 LEASEHOLD

A BRIGHT AND AIRY TOP FLOOR ONE BEDROOM FLAT IN THE HEART OF W11

North Kensington, 020 7792 5000, northkensington@winkworth.co.uk

Winkworth

for every step...

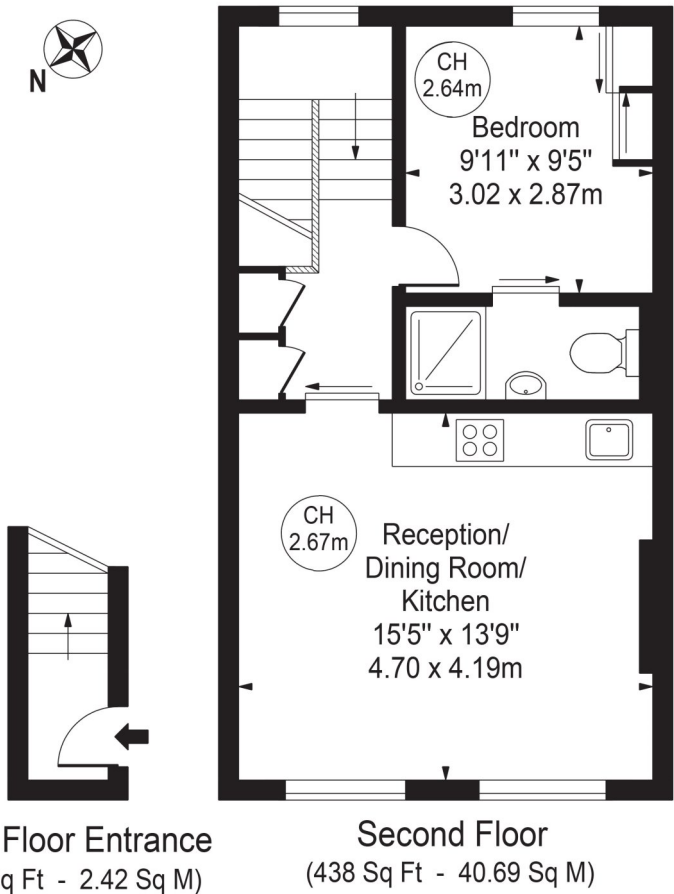
winkworth.co.uk

DESCRIPTION: Leasehold 115 Years Service Charge Ad Hoc Ground Rent £250 pa

Located in a quiet little pocket in Notting Hill, this beautiful one-bedroom flat will be the perfect buy for a First Time Buyer, Rental Investor, or someone looking for a safe and secure pied-à-terre in a prime location. Located on the second floor of this purpose-built block, this charming property comprises of an open-plan kitchen reception, and a double bedroom with en-suite bathroom. Neutral decor and clean lines enhanced by the large reception windows will make you feel instantly comfortable and relaxed. EPC Rating C.

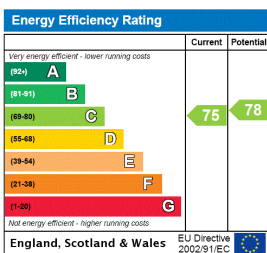
Mary Place

Approx. Gross Internal Area 464 Sq Ft - 43.11 Sq M



For Illustration Purposes Only - Not To Scale
 This floor plan should be used as a general outline for guidance only and does not constitute in whole or in part an offer or contract. Any intending purchaser or lessee should satisfy themselves by inspection, searches, enquiries and full survey as to the correctness of each statement. Any areas, measurements or distances quoted are approximate and should not be used to value a property or be the basis of any sale or let.
 Copyright Morriarti Photography & Design LTD

This floorplan is for illustration purposes only and is not to scale. The position and size of doors, windows, appliances and other features are approximate.



North Kensington | 020 7792 5000 | northkensington@winkworth.co.uk



for every step...

winkworth.co.uk

Winkworth wishes to inform prospective buyers and tenants that these particulars are a guide and act as information only. All our details are given in good faith and believed to be correct at the time of printing but they don't form part of an offer or contract. No Winkworth employee has authority to make or give any representation or warranty in relation to this property. All fixtures and fittings, whether fitted or not are deemed removable by the vendor unless stated otherwise and room sizes are measured between internal wall surfaces, including furnishings.