



BONCHURCH ROAD, LONDON, W10  
£549,950 LEASEHOLD

A FANTASTIC ONE BEDROOM SECOND FLOOR  
FLAT PRESENTED IN IMMACULATE  
CONDITION.

North Kensington | 020 7792 5000 | northkensington@winkworth.co.uk

**Winkworth**

for every step...

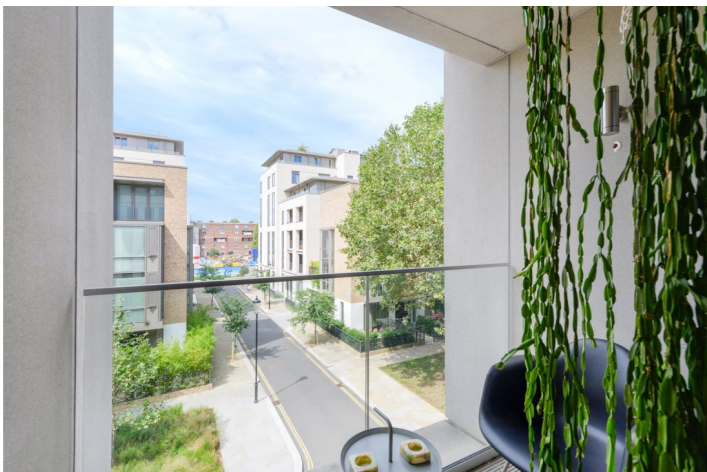
*winkworth.co.uk*



## DESCRIPTION:

A fantastic one bedroom second floor flat presented in immaculate condition. The open plan kitchen is fully integrated and the reception area has great space for both a dining table and living room furniture. The living room opens on to a fabulous deep balcony with large enough space for a table and chairs.

This vibrant pocket of London offers an eclectic village-feel in the heart of West London; full of excitement, history, shopping and nightlife.



**Winkworth**

for every step...

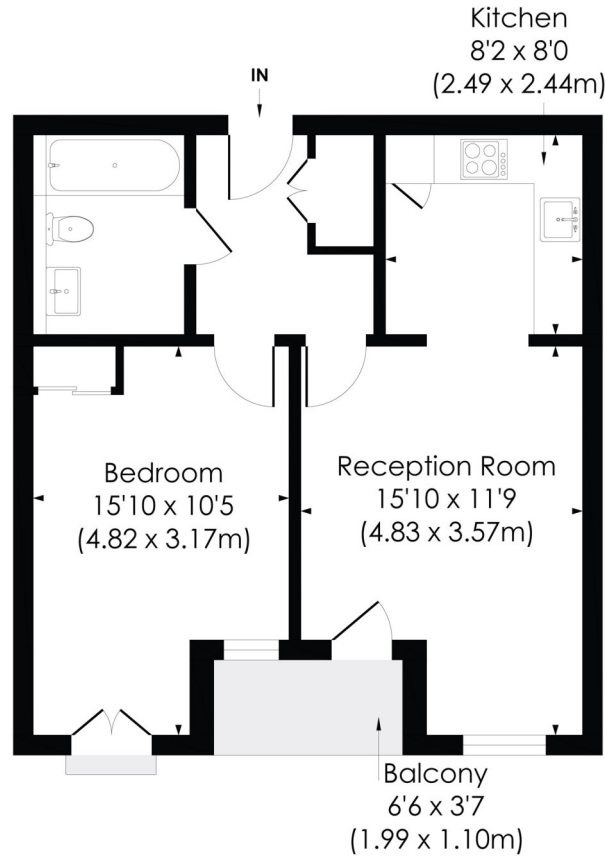


**Winkworth**

for every step...

## BONCHURCH ROAD, W6

Approx. Gross Internal Floor Area  
**519 Sq. ft/48.18 Sq. m**



### SECOND FLOOR

**pixangle**  
PROPERTY MARKETING

© Pixangle Property Marketing Ltd. info@pixangle.com Tel: 0208 870 2118  
This floor plan has been prepared for the purpose of illustration only in accordance with the latest RICS code of measuring practice and is not to scale. All measurements and areas are approximate and whilst every effort has been made to ensure the accuracy of the plan contained here, no responsibility is taken for any error, omission or misstatement.

This floorplan is for illustration purposes only and is not to scale. The position and size of doors, windows, appliances and other features are approximate.

North Kensington | 020 7792 5000 | northkensington@winkworth.co.uk

**Winkworth**

for every step...

*winkworth.co.uk*

Winkworth wishes to inform prospective buyers and tenants that these particulars are a guide and act as information only. All our details are given in good faith and believed to be correct at the time of printing but they don't form part of an offer or contract. No Winkworth employee has authority to make or give any representation or warranty in relation to this property. All fixtures and fittings, whether fitted or not are deemed removable by the vendor unless stated otherwise and room sizes are measured between internal wall surfaces, including furnishings.