



HALIFAX STREET, SE26
£650,000 FREEHOLD

DOUBLE FRONTED PERIOD PROPERTY

Forest Hill | | foresthill@winkworth.co.uk

Winkworth

for every step...

winkworth.co.uk



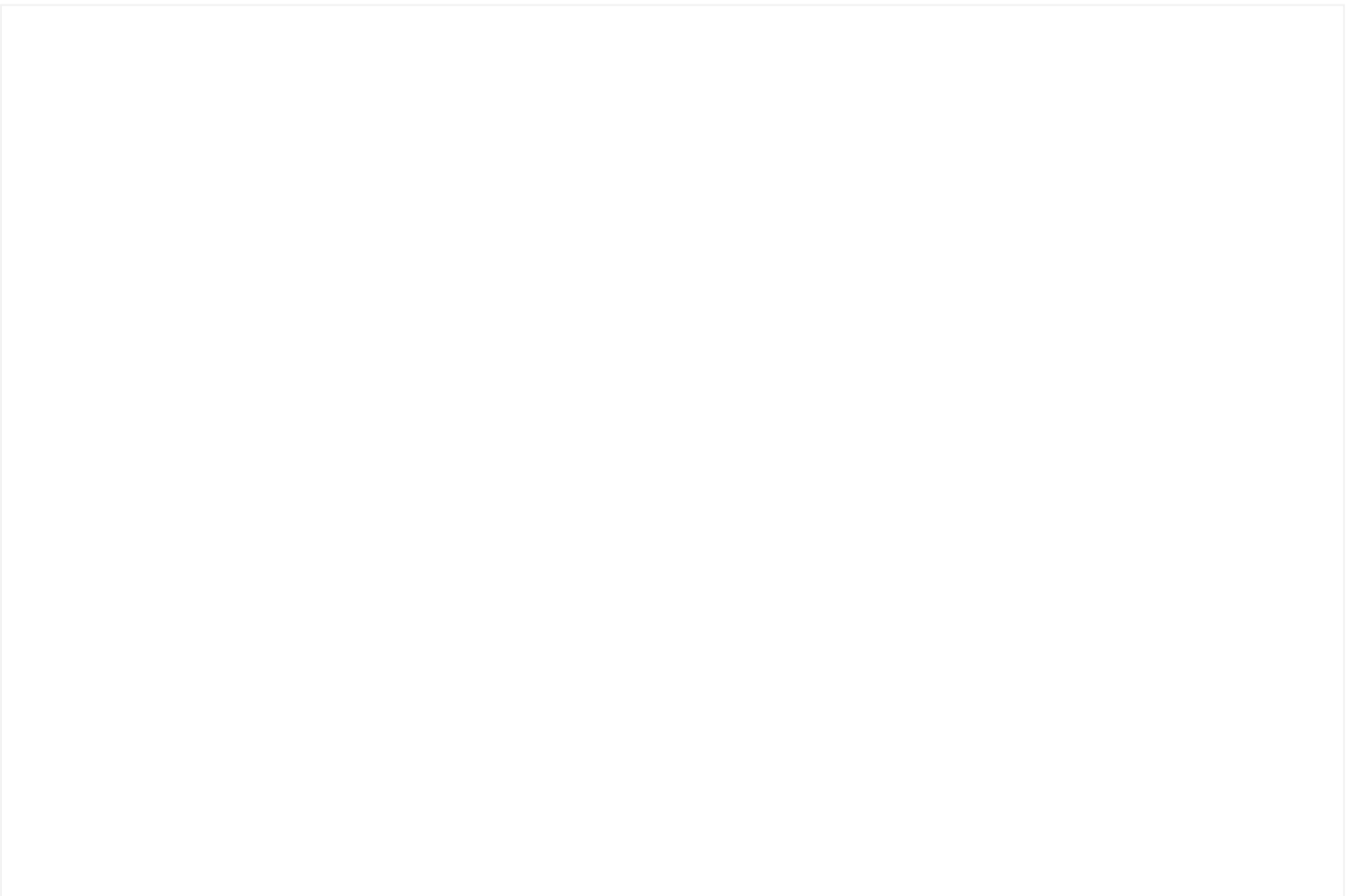
DESCRIPTION:

Located on the sought after Halifax Street is this beautiful double fronted, two-bedroom terraced house, built in the 18th century and set in the Halifax Street conservation area.

AT A GLANCE

- Two bedroom house
- Period features
- Conservation Area
- SE26
- Zone 3

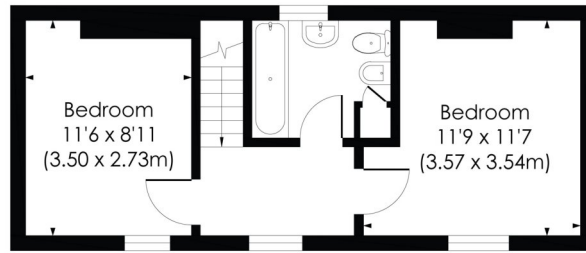




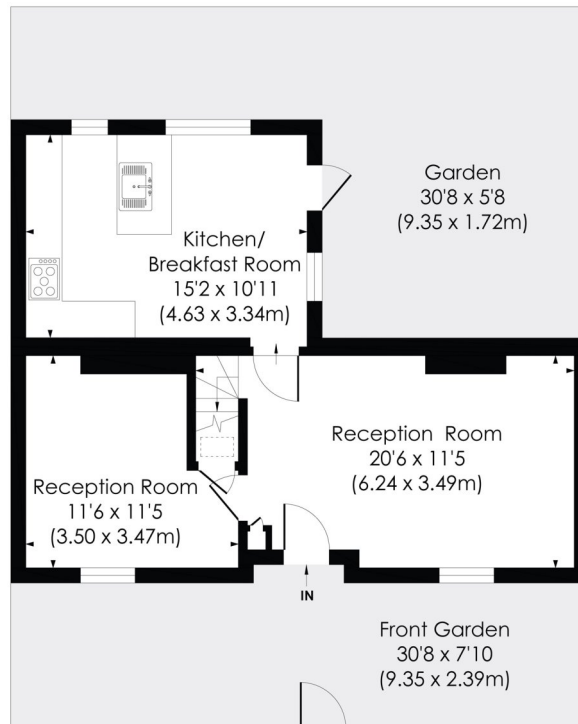
HALIFAX STREET, SE26

Approx. Gross Internal Floor Area

871 Sq. ft/80.96 Sq. m



FIRST FLOOR



GROUND FLOOR

© Pixangle Property Marketing Ltd. info@pixangle.com Tel: 0208 870 2118

pixangle
PROPERTY MARKETING

This floor plan has been prepared for the purpose of illustration only in accordance with the latest RICS code of measuring practice and is not to scale. All measurements and areas are approximate and whilst every effort has been made to ensure the accuracy of the plan contained here, no responsibility is taken for any error, omission or misstatement.

This floorplan is for illustration purposes only and is not to scale. The position and size of doors, windows, appliances and other features are approximate.

Energy Efficiency Rating	
Current	Potential
Very energy efficient - lower running costs	
(92-100) A	84
(81-91) B	
(69-80) C	
(55-68) D	
(39-54) E	
(21-58) F	
(1-20) G	
Not energy efficient - higher running costs	
England, Scotland & Wales EU Directive 2002/91/EC	

Tenure: Freehold

Term: 0 year and 0 months

Service Charge: £0 per annum

Ground Rent: £ 0 Annually (subject to increase)

Council Tax Band:

Where no figures are shown, we have been unable to ascertain the information. All figures that are shown were correct at the time of printing.

Winkworth

Forest Hill | | foresthill@winkworth.co.uk

for every step...

winkworth.co.uk

Winkworth wishes to inform prospective buyers and tenants that these particulars are a guide and act as information only. All our details are given in good faith and believed to be correct at the time of printing but they don't form part of an offer or contract. No Winkworth employee has authority to make or give any representation or warranty in relation to this property. All fixtures and fittings, whether fitted or not are deemed removable by the vendor unless stated otherwise and room sizes are measured between internal wall surfaces, including furnishings.