



TRINITY RISE, SW2
£3,000 PER MONTH UNFURNISHED

A LOVELY THREE DOUBLE BEDROOM HOUSE
IN GOOD DECORATIVE ORDER IN HERNE HILL

Herne Hill | 0207 501 8950 | hernehill@winkworth.co.uk

Winkworth

for every step...

winkworth.co.uk

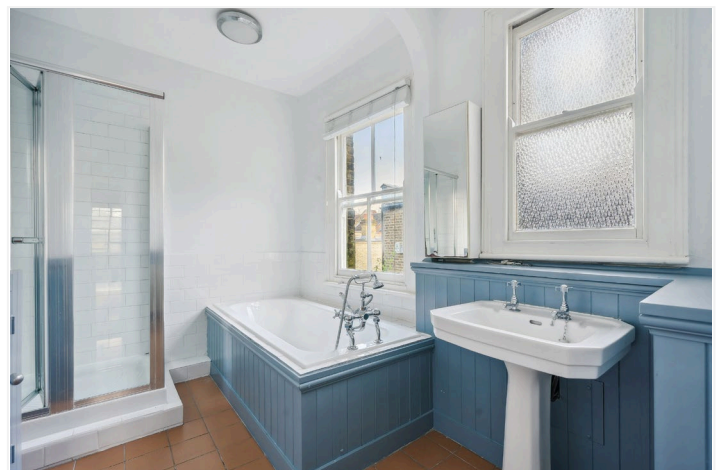


DESCRIPTION:

The property comprises three double bedrooms, a modern kitchen with a range cooker, a double reception room with French doors leading to a decked and lawned garden, a separate dining room and a downstairs WC. To the first floor you will find a large family bathroom with a bath, a separate shower cubicle, a WC and three double bedrooms, one with fitted wardrobes. Trinity Rise is a sought-after residential road and is located by Herne Hill's famous Lido and has easy access to Tulse Hill and Herne Hill Village. Transport into Central London can be easily reached from nearby Herne Hill and Tulse Hill rail stations. Unfurnished and available now this property has an HMO License for 3 sharers ONLY.

AT A GLANCE

- Three Double Bedrooms
- Double Reception
- Separate Dining Room
- Modern Fitted Kitchen
- Large Family Bathroom with WC
- Separate WC
- Garden
- Unfurnished
- Available Now
- Lambeth Council Tax Band: F
- HMO Available for 3 Sharers ONLY





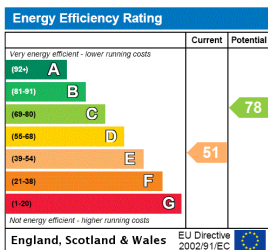
Trinity Rise, SW2

Approximate Gross Internal Area = 146.0 sq m / 1571 sq ft
 Store = 0.8 sq m / 9 sq ft
 Total = 146.8 sq m / 1580 sq ft



Illustration for identification purposes only, measurements are approximate, not to scale. (ID257293)

This floorplan is for illustration purposes only and is not to scale. The position and size of doors, windows, appliances and other features are approximate.



Herne Hill | 0207 501 8950 | hernehill@winkworth.co.uk



for every step...

winkworth.co.uk

Winkworth wishes to inform prospective buyers and tenants that these particulars are a guide and act as information only. All our details are given in good faith and believed to be correct at the time of printing but they don't form part of an offer or contract. No Winkworth employee has authority to make or give any representation or warranty in relation to this property. All fixtures and fittings, whether fitted or not are deemed removable by the vendor unless stated otherwise and room sizes are measured between internal wall surfaces, including furnishings.