



CHELVERTON ROAD, SW15
£2,950 PER MONTH FURNISHED

An incredibly spacious two bedroom flat with a garden in the heart of Putney

Putney | 020 8877 1000 | putney@winkworth.co.uk

Winkworth

for every step...

winkworth.co.uk



DESCRIPTION:

This two bedroom two bathroom garden flat extends to over 1,000 sq ft and is finished to a very high standard throughout.

Towards the front are two generous bathrooms, both with built-in wardrobes and one with ensuite bathroom with walk-in shower. There is also a family bathroom with bath and shower over.

At the rear of the property is an impressive open-plan kitchen/reception room with ample space for both living and dining. There is beautiful wood flooring and an abundance of natural light throughout.

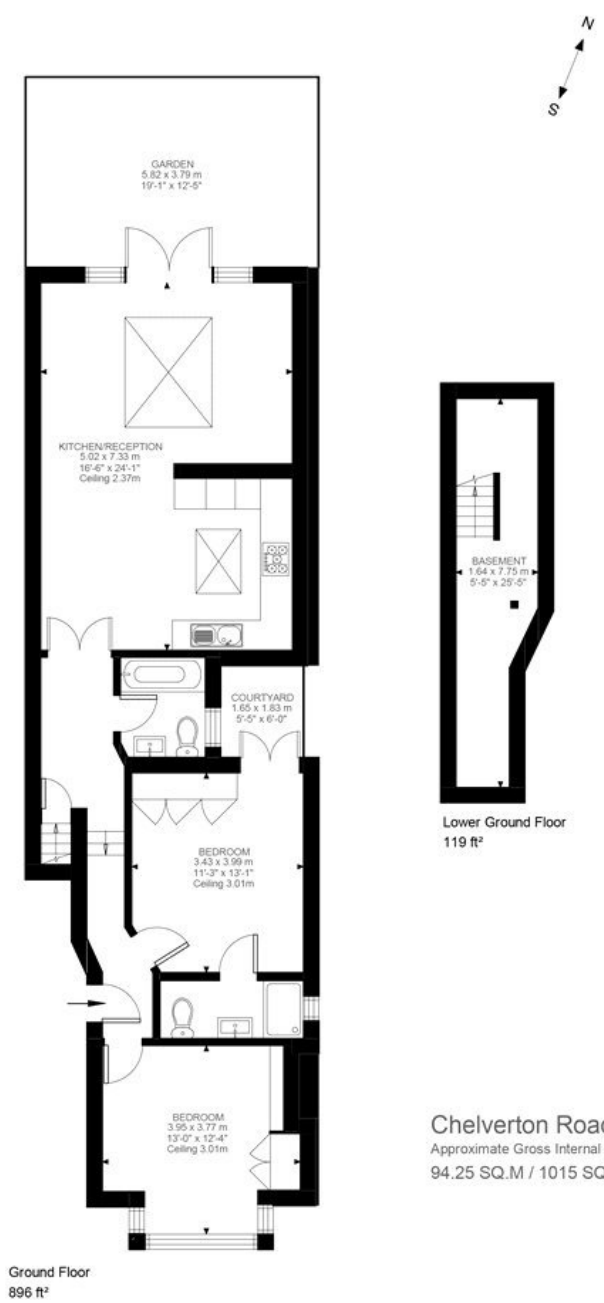
Accessed through French doors from the living room is the pretty patio garden.

Chelverton Road runs off Putney High Street and is therefore within easy reach of both Putney Mainline Station and East Putney Underground Station with their swift West End and City communications. Putney High Street offers excellent multiple and specialist shopping facilities.



ACCOMMODATION

Long Let, 2 Bedrooms, 1 Reception Room, 2 Bathrooms, Flat/Apartment, Ground Floor, Garden, Residents Parking, Period, Town/City, Furnished, 1015 Approx Sq Ft



Chelverton Road, SW15
 Approximate Gross Internal Area
 94.25 SQ.M / 1015 SQ.FT

Illustration for identification purposes only. Not to scale.
 Floor Plan Drawn According To RICS Guidelines.

This floorplan is for illustration purposes only and is not to scale. The position and size of doors, windows, appliances and other features are approximate.

Energy Efficiency Rating		Current	Potential
Very energy efficient - lower running costs			
(92)	A		
(81-91)	B		
(69-80)	C		
(55-68)	D	66	75
(39-54)	E		
(21-38)	F		
(1-20)	G		
Not energy efficient - higher running costs			
England, Scotland & Wales		EU Directive 2002/91/EC	

Putney | 020 8877 1000 | putney@winkworth.co.uk



for every step...

winkworth.co.uk

Winkworth wishes to inform prospective buyers and tenants that these particulars are a guide and act as information only. All our details are given in good faith and believed to be correct at the time of printing but they don't form part of an offer or contract. No Winkworth employee has authority to make or give any representation or warranty in relation to this property. All fixtures and fittings, whether fitted or not are deemed removable by the vendor unless stated otherwise and room sizes are measured between internal wall surfaces, including furnishings.