



KENSINGTON WAY, HERTFORDSHIRE, WD6

£435,000 FREEHOLD

A TWO DOUBLE BEDROOM HOUSE WITH TWO PARKING SPACES

Borehamwood | 020 8953 8899 | borehamwood@winkworth.co.uk



DESCRIPTION:

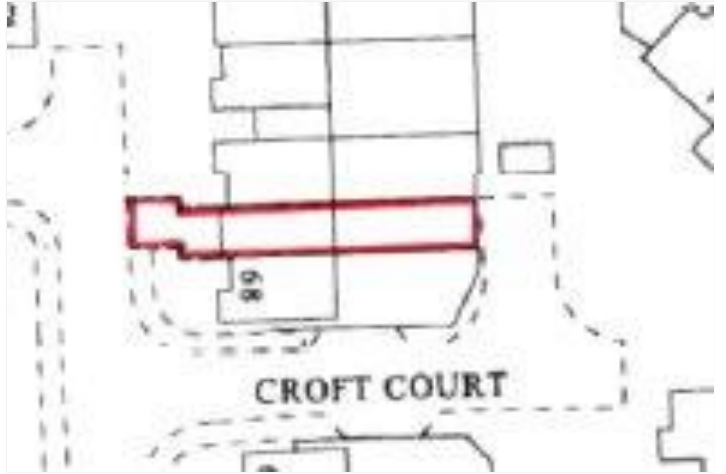
Immaculately presented, this modern terraced house offers a perfect blend of style and comfort. Boasting two well-proportioned double bedrooms, this property is ideal for a small family or professionals seeking a peaceful retreat. The interior is bright and well-lit, creating a welcoming atmosphere throughout. The property has been meticulously maintained, ensuring a hassle-free move-in experience.

Conveniently located in a quiet neighbourhood, close to well-regarded and "Good" Ofsted rated schools including Yavneh and Monksmead, residents can enjoy privacy and tranquillity while still being within easy reach of local amenities and transport links. The property also features a charming garden, as well as a guest cloakroom and two off-street parking spaces to front. .

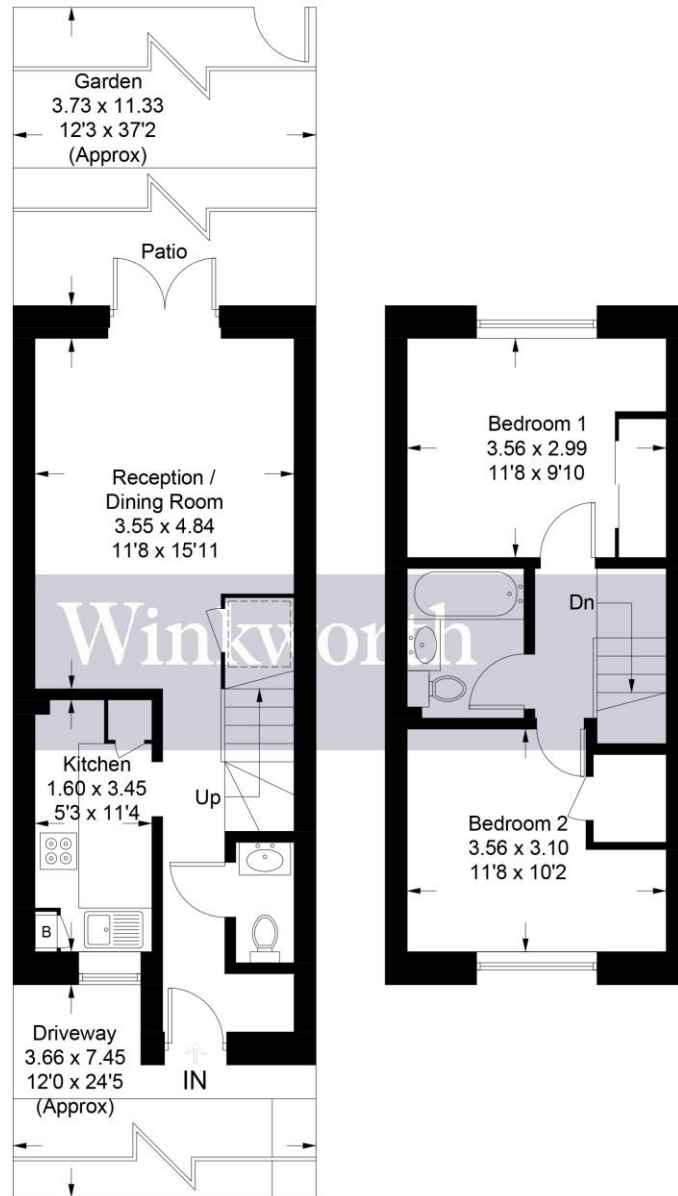
AT A GLANCE

- Two Double Bedrooms
- Chain Free
- 669 Square Feet
- Cul de Sac Location
- Guest Cloakroom
- Two Allocated Parking Spaces
- Gas Central Heating
- Double Glazed





Approximate Gross Internal Area = 62.2 sq m / 669 sq ft

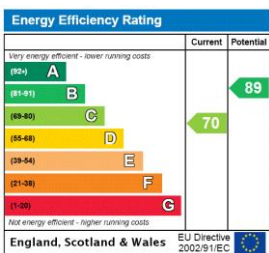


Ground Floor

First Floor

Illustration for identification purposes only, measurements are approximate, not to scale. Winkworth © 2024 (ID1056319)

This floorplan is for illustration purposes only and is not to scale. The position and size of doors, windows, appliances and other features are approximate.



Tenure: Freehold
Term: Expires -
Service Charge: £0 per annum
Ground Rent: £ 0 Annually (subject to increase)
Council Tax Band:

Where no figures are shown, we have been unable to ascertain the information. All figures that are shown were correct at the time of printing.