



LYNDHURST GROVE, LONDON, SE15
£1,000,000 FREEHOLD

Winkworth are delighted to welcome to the market this beautiful six bedroom victorian House located in the sought after Lyndhurst Grove.



for every step...

Forest Hill | foresthill@winkworth.co.uk
winkworth.co.uk



DESCRIPTION:

Period House | 1,673 Sq. ft | Six genuine double bedrooms | Large reception room | Open plan Kitchen/ Dining Area | Roof terrace and private garden | Freehold | Excellent investment property | Yield 8% | Approval to extend | No onward chain |



Winkworth

for every step...

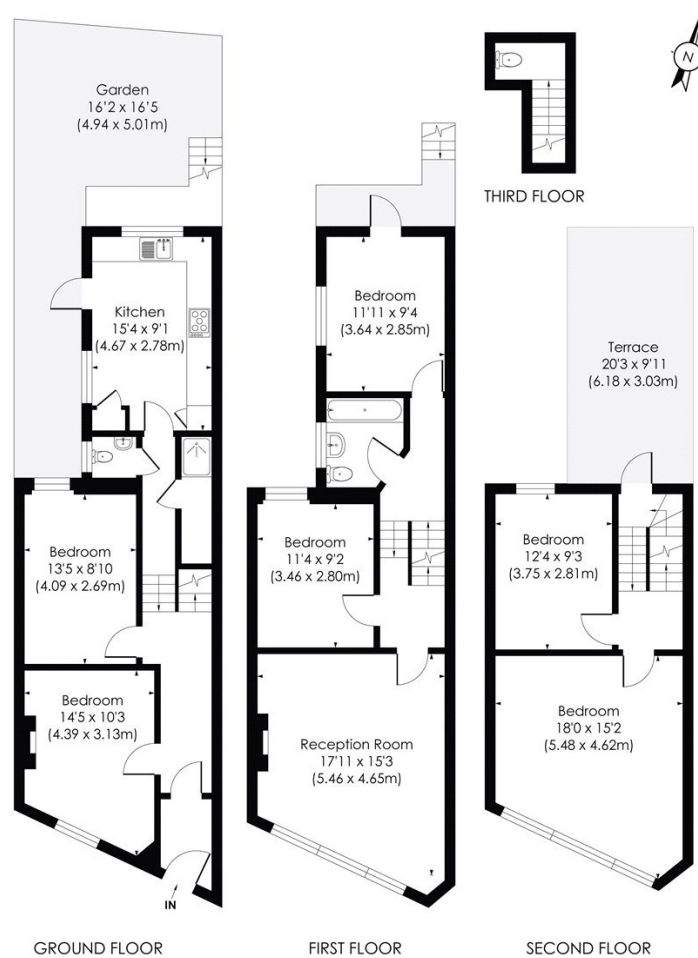


Winkworth

for every step...

LYNDHURST GROVE, SE15

Approx. Gross Internal Floor Area
1673 Sq. ft/155.4 Sq. m



pixangle
PROPERTY MARKETING

© Pixangle Property Marketing Ltd. info@pixangle.com Tel: 0208 870 2118
This floor plan has been prepared for the purpose of illustration only in accordance with the latest RICS code of measuring practice and is not to scale. All measurements and areas are approximate and whilst every effort has been made to ensure the accuracy of the plan contained here, no responsibility is taken for any error, omission or misstatement.

This floorplan is for illustration purposes only and is not to scale. The position and size of doors, windows, appliances and other features are approximate.

Energy Efficiency Rating		Current	Potential
Very energy efficient - lower running costs			
(92)	A		
(81-91)	B		
(69-80)	C		
(55-68)	D	66	67
(39-54)	E		
(21-58)	F		
(1-20)	G		
Not energy efficient - higher running costs			
England, Scotland & Wales		EU Directive 2002/91/EC	

COUNCIL TAX BAND- E LOCAL AUTHORITY - Southwark TENURE- Freehold

SERVICES: Mains Electric, Gas, Drainage & Water.

BROADBAND: Ultrafast & Standard Broadband Available. Checked on Openreach Oct 2024.

MOBILE SIGNAL: You are likely to have good voice coverage with most mobile providers, you are likely to have limited data coverage with some providers

HEATING: Gas Central Heating

Winkworth

NOTICE: Whilst every effort has been made to ensure the accuracy of these sales details, they are for guidance purposes only and prospective purchasers are advised to seek their own professional advice as well as to satisfy themselves by inspection or otherwise as to their correctness. No representation or warranty whatsoever is made in relation to this property by Winkworth or its employees nor do such sales details form part of any offer or contract.

winkworth.co.uk

Winkworth wishes to inform prospective buyers and tenants that these particulars are a guide and act as information only. All our details are given in good faith and believed to be correct at the time of printing but they don't form part of an offer or contract. No Winkworth employee has authority to make or give any representation or warranty in relation to this property. All fixtures and fittings, whether fitted or not are deemed removable by the vendor unless stated otherwise and room sizes are measured between internal wall surfaces, including furnishings.

for every step...