



CREDENHILL STREET, SW16
£450,000 LEASEHOLD

A BEAUTIFULLY PRESENTED ONE-BEDROOM GARDEN FLAT.

Tooting | 020 8767 5221 | tooting@winkworth.co.uk

Winkworth

for every step...

winkworth.co.uk

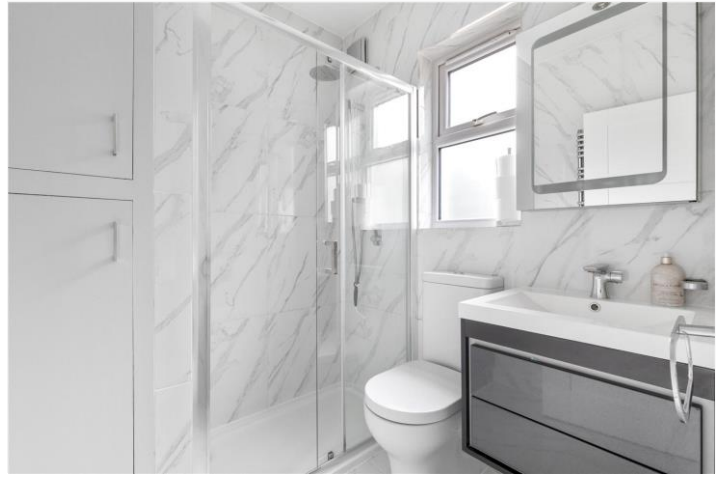


DESCRIPTION:

A beautifully presented one-bedroom garden flat with plenty of natural light. This ground floor property features a bright reception room, complete with elegant cornicing, window shutters, a charming Victorian fireplace, and wooden flooring throughout. The spacious double bedroom also boasts wooden floors and a built-in wardrobe. Additionally, there is a large storage area in the hallway. The flat includes a stylish, modern kitchen and bathroom, along with a North West-facing garden that features a newly built outdoor office space, with electricity and internet which makes it perfect for working from home.

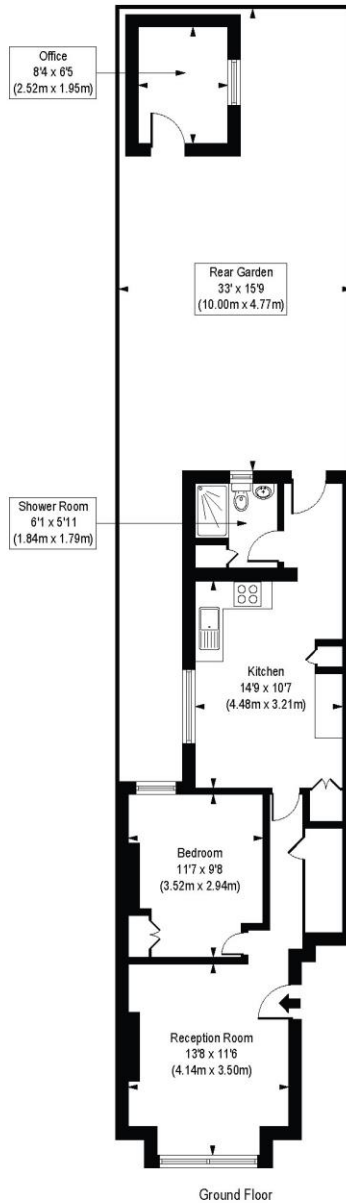
Credenhill Street is located in the highly sought-after Furzedown area, offering easy access to a variety of local amenities on nearby Moyser Road and Tooting High Road. Excellent transport links are within walking distance, including Tooting Broadway Underground (Northern Line) (1.3 miles), Streatham Common (with connections to London Bridge, Victoria, and Clapham Junction) (0.6 miles), and Streatham Overground Station (serving Thameslink routes) (1.0 miles). Several bus routes also pass by at the end of the street, ensuring convenient travel options.

Wandsworth Council Tax Band: C



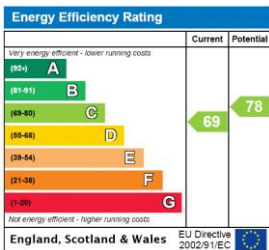
Credenhill Street, SW16

Approx. Gross Internal Floor Area 611 sq. ft / 56.77 sq. m (Including Office)
 Approx. Gross Internal Floor Area 558 sq. ft / 51.86 sq. m (Excluding Office)



COMPLIANT WITH RICS CODE OF MEASURING PRACTICE. Floorplan is for illustrative purposes only and is not to scale. Every attempt has been made to ensure the accuracy of the floorplan shown, however all measurements, fixtures, fittings and data shown are an approximate interpretation for illustrative purposes only. Liability for errors, omissions or mis-statement through negligence or otherwise is hereby excluded.

This floorplan is for illustration purposes only and is not to scale. The position and size of doors, windows, appliances and other features are approximate.



Tooting | 020 8767 5221 | tooting@winkworth.co.uk

for every step...

winkworth.co.uk

Winkworth wishes to inform prospective buyers and tenants that these particulars are a guide and act as information only. All our details are given in good faith and believed to be correct at the time of printing but they don't form part of an offer or contract. No Winkworth employee has authority to make or give any representation or warranty in relation to this property. All fixtures and fittings, whether fitted or not are deemed removable by the vendor unless stated otherwise and room sizes are measured between internal wall surfaces, including furnishings.