



MARMORA ROAD, EAST DULWICH, LONDON, SE22
£485,000 LEASEHOLD

THIS EXTREMELY WELL-PRESENTED TWO DOUBLE BEDROOM, TOP-FLOOR VICTORIAN FLAT IS SITUATED ON A QUIET RESIDENTIAL ROAD IN THE CENTRE OF EAST DULWICH AND OFFERS IMPRESSIVE VIEWS ACROSS THE LONDON SKYLINE.

DESCRIPTION:

The property offers a modern kitchen and bathroom, each fitted with heated flooring. The property boasts a good-sized reception room and two double bedrooms. It is well positioned, situated in close proximity to local amenities including those on Lordship Lane as well as a number of local bars, restaurants, shops and Peckham Rye Park. Transport links are provided via Honor Oak Park for the East London Line and Peckham Rye (London Overground, National Rail, and Thameslink services) giving convenient access to all areas of central London. This is a fantastic flat in a superb location.

AT A GLANCE

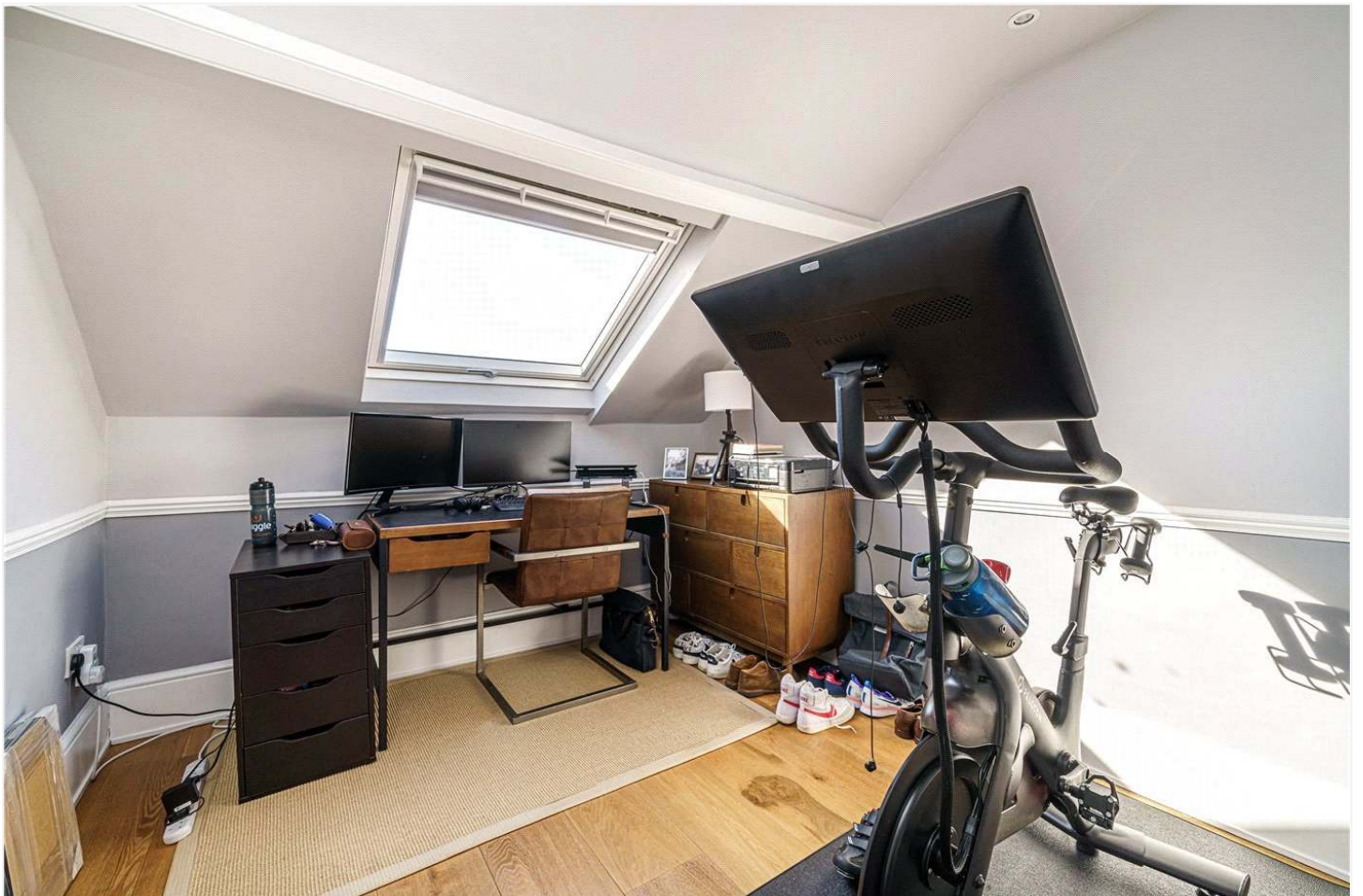
- Two Double Bedrooms
- Top-Floor Victorian Flat
- Modern Fitted Kitchen
- Modern Bathroom
- Impressive Views

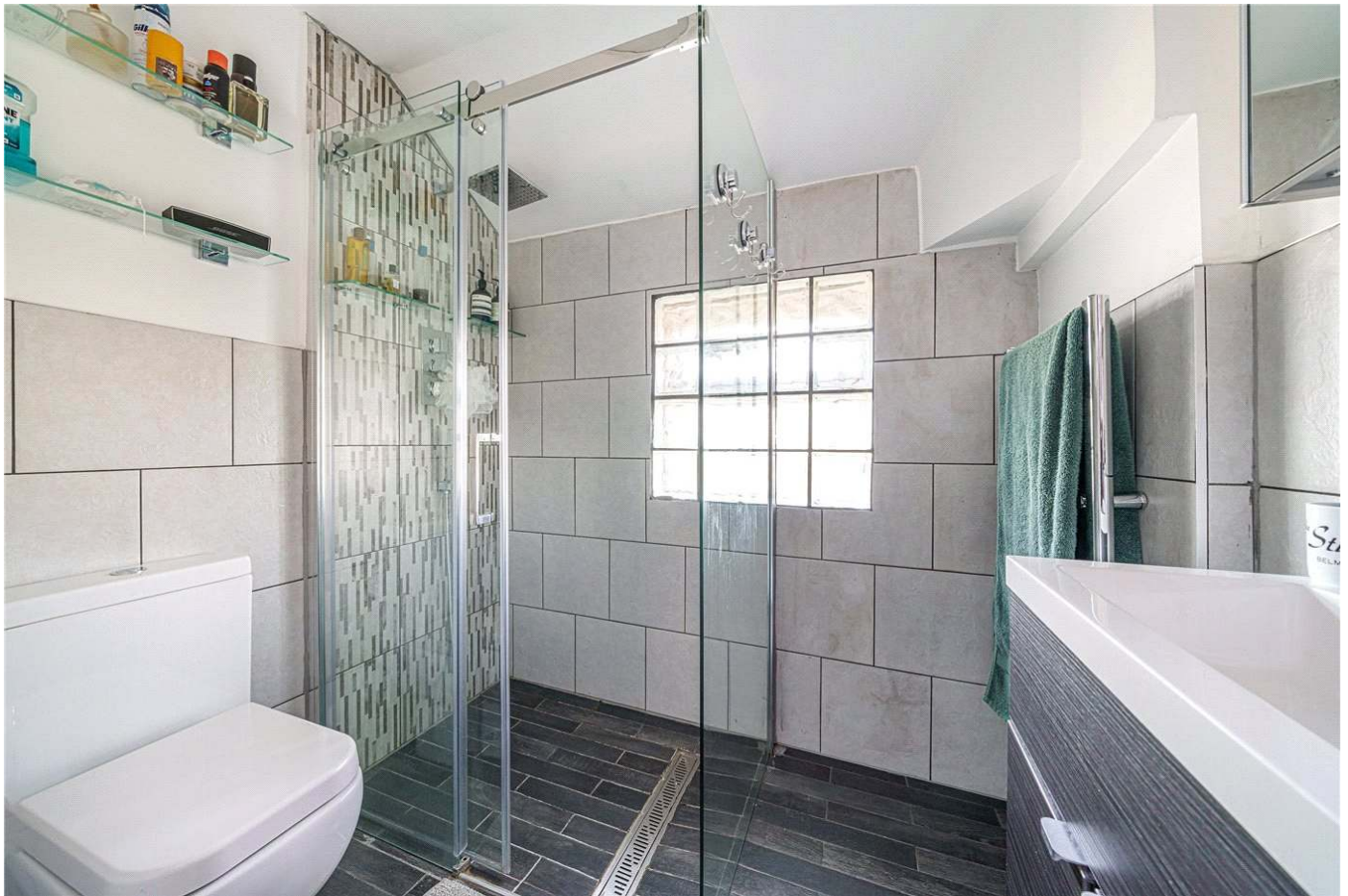
Dulwich | 020 8299 2722 | dulwich@winkworth.co.uk

Tenure Leasehold approx. 106 yrs remaining | Council Tax Band B – London Borough of Southwark | Service Charge TBC | Ground Rent TBC

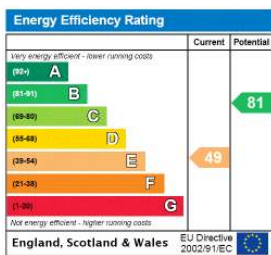








This floorplan is for illustration purposes only and is not to scale. The position and size of doors, windows, appliances and other features are approximate.



Dulwich | 020 8299 2722 | dulwich@winkworth.co.uk



winkworth.co.uk

See things differently

Winkworth wishes to inform prospective buyers and tenants that these particulars are a guide and act as information only. All our details are given in good faith and believed to be correct at the time of printing but they don't form part of an offer or contract. No Winkworth employee has authority to make or give any representation or warranty in relation to this property. All fixtures and fittings, whether fitted or not are deemed removable by the vendor unless stated otherwise and room sizes are measured between internal wall surfaces, including furnishings.