



UNDINE STREET, SW17
£550,000 LEASEHOLD

A WELL PRESENTED THREE BEDROOM TWO BATHROOM FLAT.

Tooting | 020 8767 5221 | tooting@winkworth.co.uk

Winkworth

for every step...

winkworth.co.uk



DESCRIPTION:

This beautifully presented split-level three-bedroom flat boasts a bright reception room, a sleek modern kitchen with wooden countertops and tiled splashbacks, and a spacious master bedroom, complemented by a stylish bathroom on the first floor. The second floor extends into the loft, offering two additional bedrooms, one featuring built-in wardrobes and a balcony, along with a contemporary shower room.

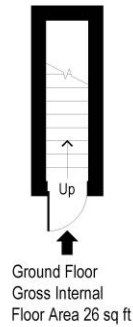
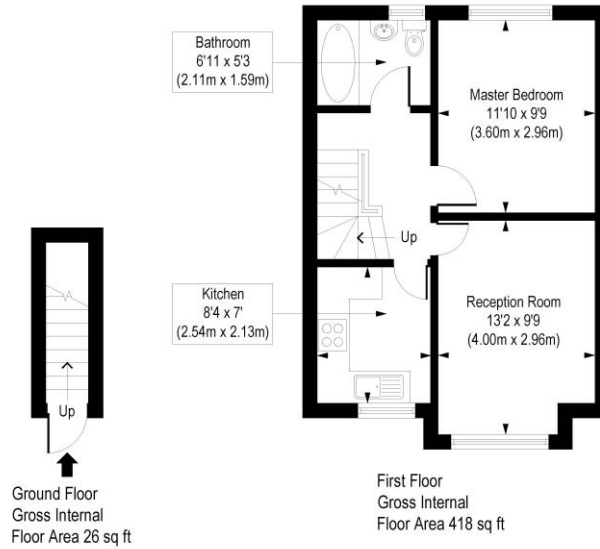
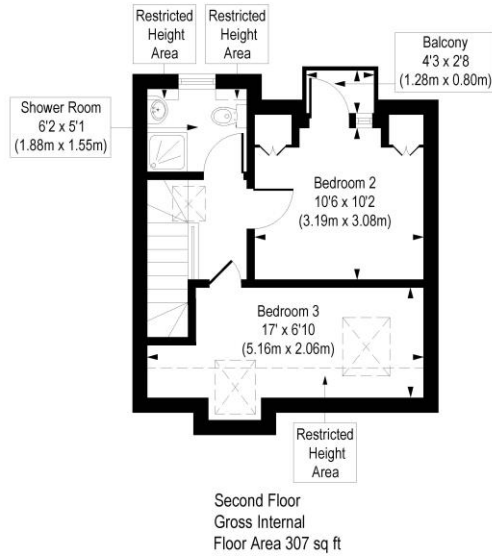
Undine Street, located in Tooting (SW17), is a vibrant residential area within the London Borough of Wandsworth. It benefits from excellent transport links, including proximity to Tooting Broadway station (0.2 miles), making it ideal for commuters. The area is home to outstanding schools such as St Boniface RC Primary and Tooting Primary. Residents enjoy access to various supermarkets, excellent air quality, and a diverse community of young professionals and families. Despite its urban conveniences, the street has limited green spaces but retains a welcoming neighbourhood charm.

Wandsworth Council Tax Band: C



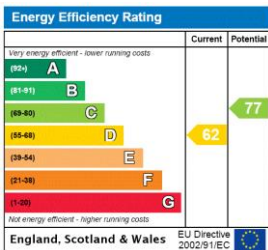
Undine Street, SW17

Approx. Gross Internal Floor Area 751 sq. ft / 69.76 sq. m (Including Restricted Height Area)
 Approx. Gross Internal Floor Area 713 sq. ft / 66.23 sq. m (Excluding Restricted Height Area)



COMPLIANT WITH RICS CODE OF MEASURING PRACTICE. Floorplan is for illustrative purposes only and is not to scale. Every attempt has been made to ensure the accuracy of the floorplan shown, however all measurements, fixtures, fittings and data shown are an approximate interpretation for illustrative purposes only. Liability for errors, omissions or mis-statement through negligence or otherwise is hereby excluded.

This floorplan is for illustration purposes only and is not to scale. The position and size of doors, windows, appliances and other features are approximate.



Tooting | 020 8767 5221 | tooting@winkworth.co.uk

for every step...

winkworth.co.uk

Winkworth wishes to inform prospective buyers and tenants that these particulars are a guide and act as information only. All our details are given in good faith and believed to be correct at the time of printing but they don't form part of an offer or contract. No Winkworth employee has authority to make or give any representation or warranty in relation to this property. All fixtures and fittings, whether fitted or not are deemed removable by the vendor unless stated otherwise and room sizes are measured between internal wall surfaces, including furnishings.