

ARTISAN MEWS, WARFIELD ROAD, LONDON, NW10

£895,000 LEASEHOLD

**AN EXCELLENT AND CONTEMPORARY THREE BEDROOM,
TWO BATHROOM TOWNHOUSE, SPREAD ACROSS THREE
FLOORS WITHIN A SECURE GATED DEVELOPMENT.**

Kensal Rise & Queens Park | 0208 960 4947 | kensalrise@winkworth.co.uk

Winkworth

winkworth.co.uk

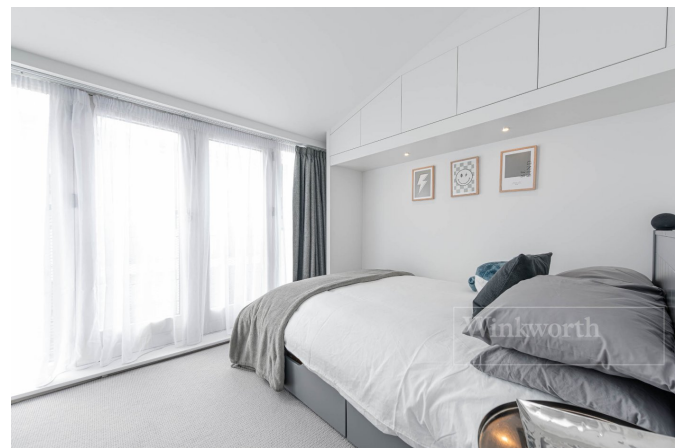
See things differently



LOCATION:

Artisan Mews sits within the popular Kensal Triangle and is set within easy reach of both Kensal Rise Station (Overground) and Kensal Green Tube Stations (Bakerloo Line & Overground). An abundance of local shops, gastropubs and coffee shops are accessible on Chamberlayne Road and Queens Park. Jaego's House is also a popular new addition with local residents. Ladbroke Grove, Portobello Road are also easily accessible.





DESCRIPTION:

Located within a sought-after gated development, we have to offer this wonderful three bedroom, two bathroom Mews house. On entry, the ground floor comprises of a reception/dining room with large sliding patio doors leading directly on to the private courtyard. This is the perfect entertaining space for friends and family. There is also a guest WC located off the entrance hallway.

The first floor has a stunning kitchen with vaulted ceilings, large skylights and ample space for a 4-6 seater table. There is also an additional reception room, which depending on your layout preference, could be used as a large double bedroom. This room is flooded with natural light due to full sized floor to ceiling doors with Juliet balcony.

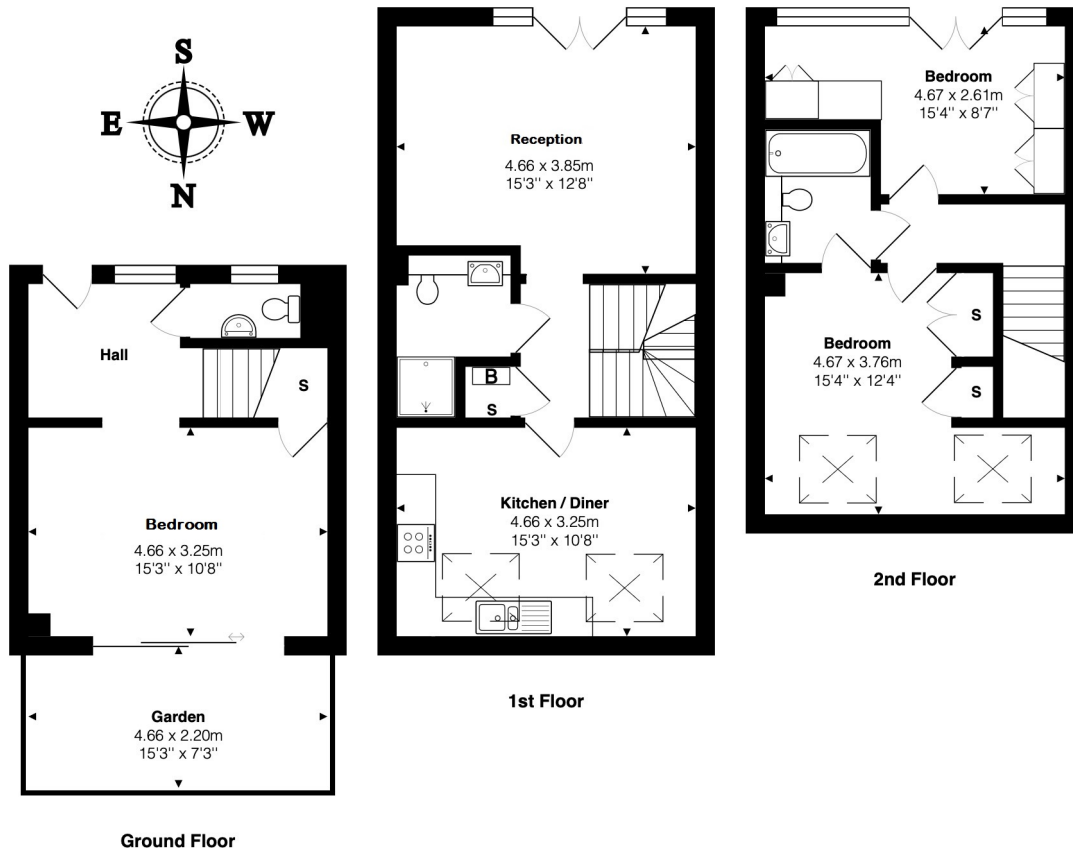
Finally, the top floor has the principle bedroom, with jack-and-jill en-suite and fitted storage, as well as an additional bedroom. The principle bedroom further benefits from a jack-and-jill style en-suite shower room.

Finally, the property also has allocated parking via a secure gated entrance. Viewing comes highly recommended.

winkworth.co.uk

Winkworth

See things differently



Total Area: 105.4 m² ... 1134 ft² (excluding garden)
 All measurements are approximate and for display purposes only

This floorplan is for illustration purposes only and is not to scale. The position and size of doors, windows, appliances and other features are approximate.

Kensal Rise & Queens Park | 0208 960 4947 | kensalrise@winkworth.co.uk

Winkworth

winkworth.co.uk

See things differently

winkworth wishes to inform prospective buyers and tenants that these particulars are a guide and act as information only. All our details are given in good faith and believed to be correct at the time of printing but they don't form part of an offer or contract. No winkworth employee has authority to make or give any representation or warranty in relation to this property. All fixtures and fittings, whether fitted or not are deemed removable by the vendor unless stated otherwise and room sizes are measured between internal wall surfaces, including furnishings.