



FLAT 6, MINSTER ROAD, LONDON, NW2
£589,950 LEASEHOLD

**A LOVELY TOP FLOOR, TWO DOUBLE BEDROOM SPLIT
LEVEL DUPLEX APARTMENT, CLOSE TO WEST
HAMPSTEAD AND KILBURN**

Kensal & Queens Park | 0208 960 4947 | kensalrise@winkworth.co.uk

Winkworth

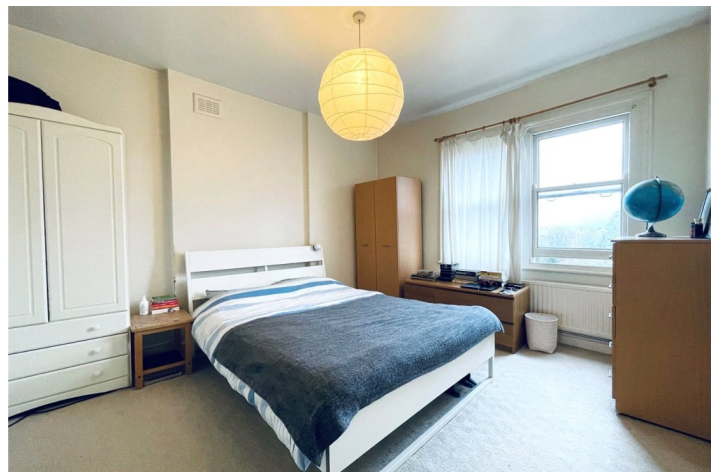
winkworth.co.uk

See things differently



LOCATION:

Minster Road is ideally located to take advantage of Kilburn High Road and Kilburn Jubilee line station which is in zone two. This is an excellent line with super-fast access to Central London and The City. Locals also gravitate to Mill Lane and West End Lane in West Hampstead, both of which have an abundance of shops, bars and restaurants to suit all needs. Highly Recommended.



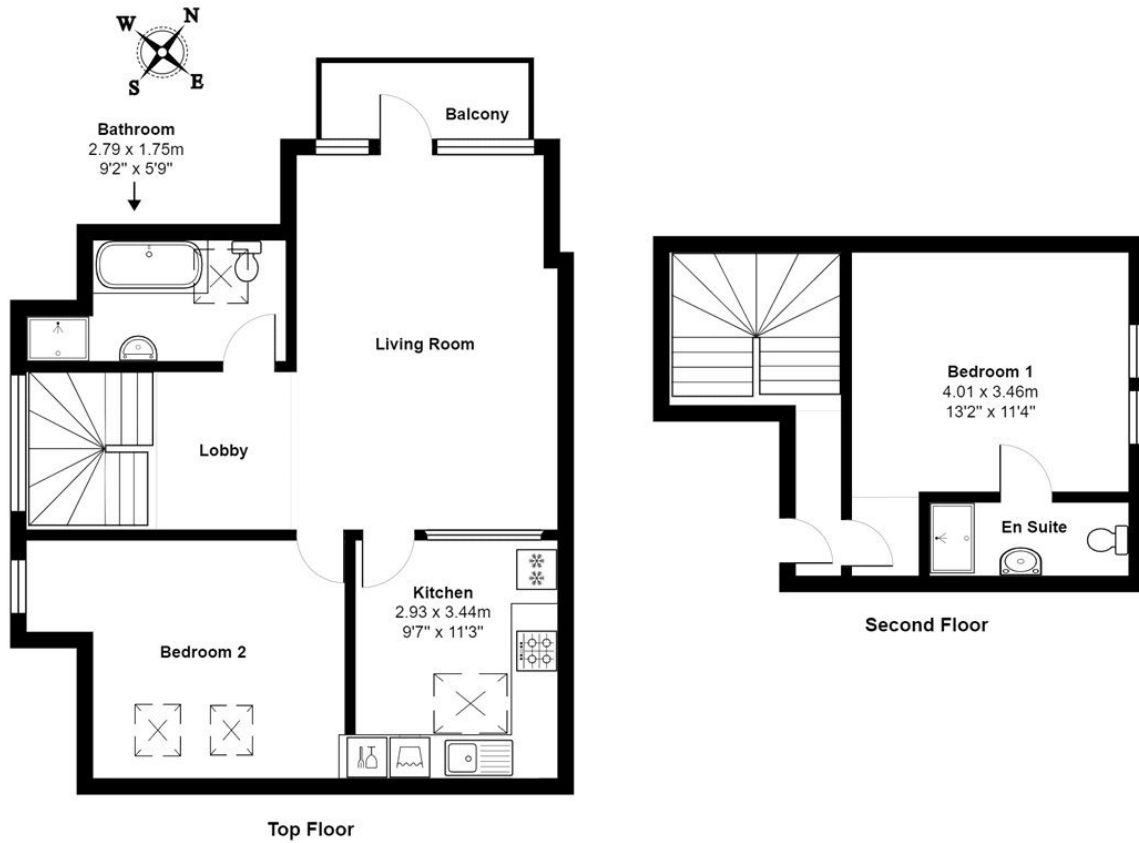
Winkworth



DESCRIPTION:

This lovely top floor apartment measures 833 sq. ft. and will suit first time buyers and rental investors alike. It has two really good sized double bedrooms, one of them also has an en-suite shower room. There is a bright and airy reception room with space for dining and lounging and this kitchen is semi open plan with this space. The property is currently let out but is offered with vacant possession, a long lease and no upper chain.

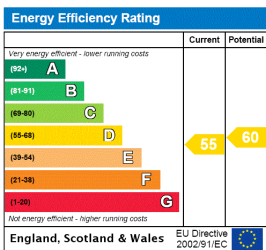
Winkworth



Total Area: 77.9 m² ... 839 ft² (excluding balcony)

All measurements are approximate and for display purposes only

This floorplan is for illustration purposes only and is not to scale. The position and size of doors, windows, appliances and other features are approximate.



Kensal & Queens Park | 0208 960 4947 | kensalrise@winkworth.co.uk



winkworth.co.uk

See things differently

winkworth wishes to inform prospective buyers and tenants that these particulars are a guide and act as information only. All our details are given in good faith and believed to be correct at the time of printing but they don't form part of an offer or contract. No winkworth employee has authority to make or give any representation or warranty in relation to this property. All fixtures and fittings, whether fitted or not are deemed removable by the vendor unless stated otherwise and room sizes are measured between internal wall surfaces, including furnishings.