



# Churchill Place

Basingstoke RG21 7AA

## Description

This modern one bedroom furnished duplex apartment has two allocated parking spaces and is set high up on the thirteenth floor with fine views out over the town and countryside beyond.

It is located just a short stroll from the Festival Place shopping centre and Basingstoke's mainline railway station (45 minutes to London Waterloo).

It has a spacious kitchen/living room with stairs leading up to the bedroom level. The kitchen has high gloss finish units with stone composite worksurfaces and integrated appliances including an oven and hob, washer/drier, dishwasher and fridge/freezer.

The bedroom is a good size 'double' with storage space and the stunning shower room has a large cubicle, complemented by stylish wall and floor tiling.

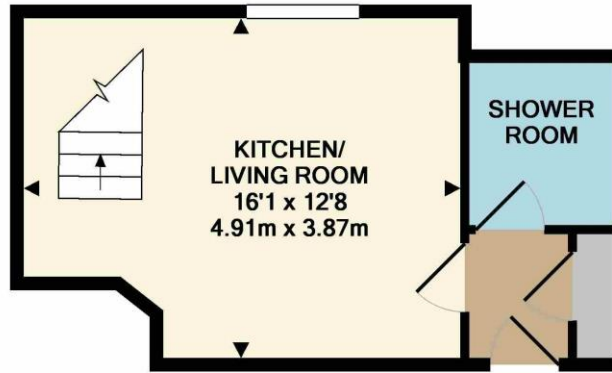


**Winkworth**

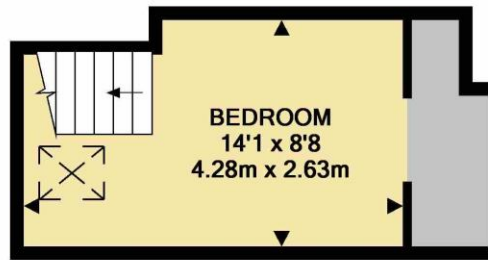
## Accommodation

Modern apartment  
 Prime town centre location  
 Kitchen/living room  
 Double bedroom  
 Luxury shower room  
 Furnished  
 Allocated parking spaces

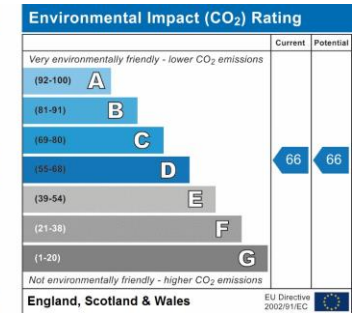
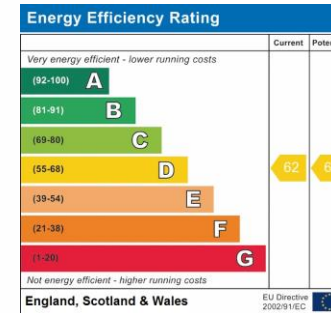
All details are given in good faith and are believed to be correct at time of printing. Winkworth give no representation as to their accuracy and potential purchasers or tenants must satisfy themselves by inspection or otherwise as to their correctness. No employee of Winkworth has authority to make or give any representation or warranty in relation to this property.



LOWER LEVEL



UPPER LEVEL



Whilst every attempt has been made to ensure the accuracy of the floor plan contained here, measurements of doors, windows, rooms and any other items are approximate and no responsibility is taken for any error, omission, or mis-statement. This plan is for illustrative purposes only and should be used as such by any prospective purchaser. The services, systems and appliances shown have not been tested and no guarantee as to their operability or efficiency can be given  
 Made with Metropix ©2019

## Basingstoke Office

10B Church Street, Basingstoke, Hampshire, RG21 7QE  
 01256 811730 | basingstoke@winkworth.co.uk  
[winkworth.co.uk/Basingstoke](http://winkworth.co.uk/Basingstoke)

# Winkworth

See things differently.