



RANDOLPH AVENUE, LONDON, W9 £1,200,000 SHARE OF FREEHOLD

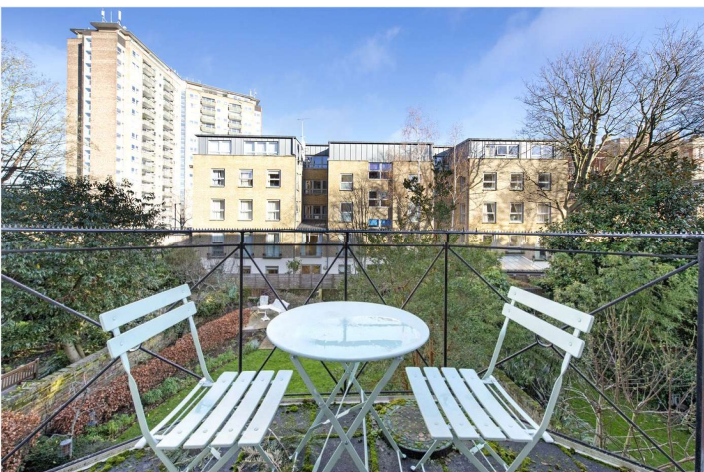
A unique opportunity to purchase a (Approx. 889 sq. ft.) well-proportioned two double bedroom first and second floor maisonette (with a lift), forming part of a beautiful grand stucco fronted period conversion, offering a wealth of natural light and two balconies. The apartment is situated to the rear of the building so is quiet and retains some wonderful original features, including a beautiful reception room with high ceilings with two sets of French doors opening onto two separate balconies overlooking wonderful private gardens, a fully fitted kitchen, a principal bedroom suite, a bathroom and a second double bedroom. Randolph Avenue is a desirable residential road of period stucco fronted terraced houses, located moments away from all the amenities that Little Venice has to offer, including the boutique shops, cafes on Clifton Road, the famous Regents Canal and the underground at Warwick Avenue (Bakerloo line - 0.3 miles).

Primary Double Bedroom With En-Suite Bathroom | Second Double Bedroom | Family Bathroom | Kitchen | Open Plan Reception/Dining Room | Two Balconies | Share Of Freehold

Winkworth

for every step...

winkworth.co.uk/maida-vale

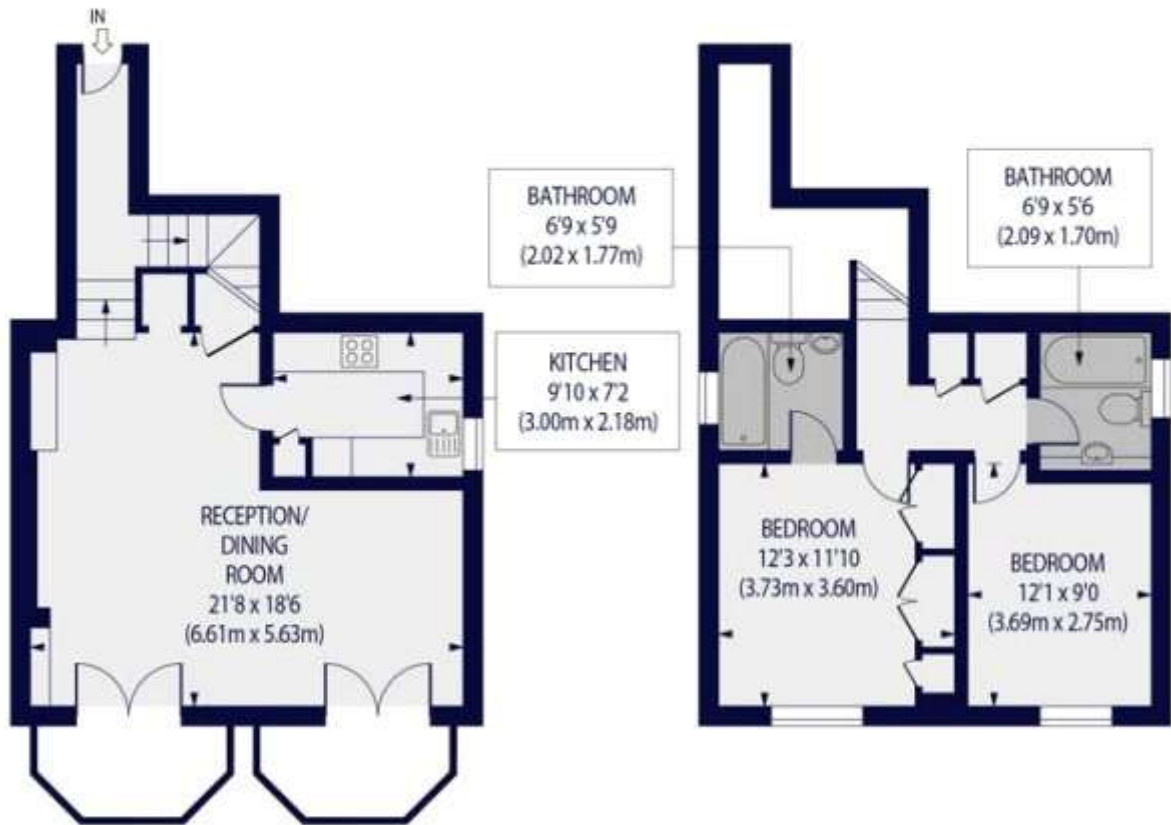


RANDOLPH AVENUE, LONDON, W9

Approx. Gross Internal Floor Area 889 sq ft. / 82.59 sq.m

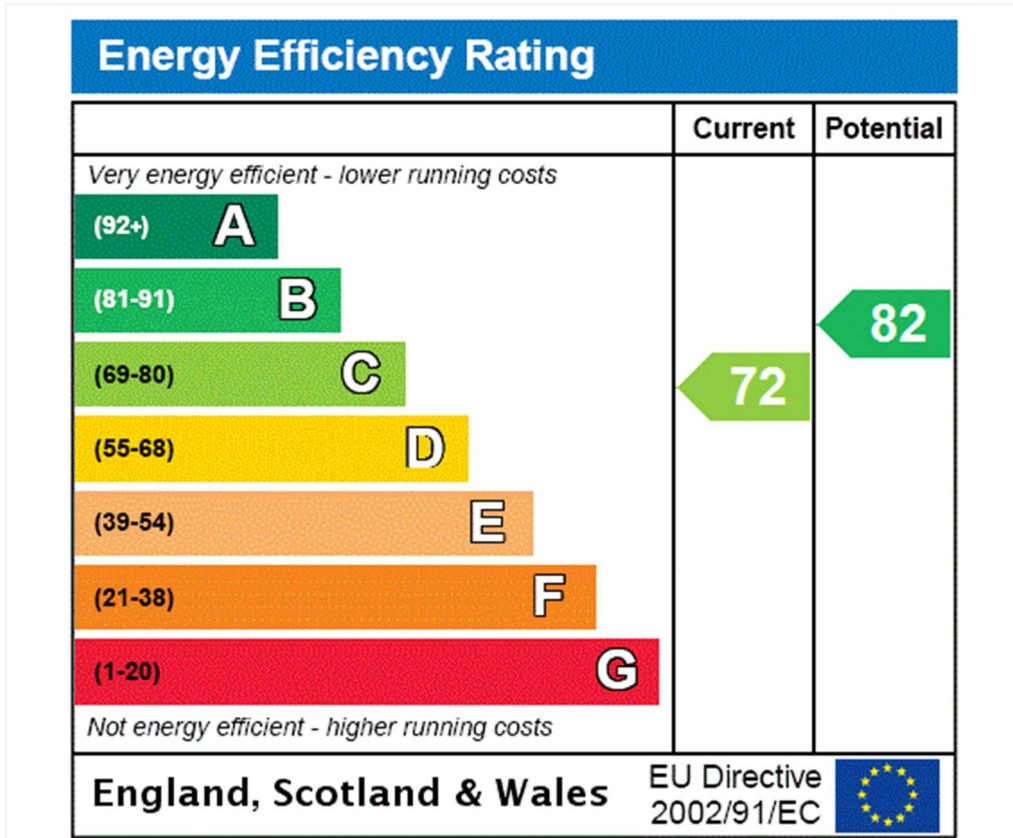


 - Ceiling Height



For Illustration Purposes Only - Not To Scale Floor Plan by www.nogaphotostudio.com Ref: No.51318
This floor plan should be used as a general outline for guidance only. Any intending purchaser or lessee should satisfy themselves by inspection, searches, enquiries and full survey as to the correctness of each statement. Any areas, measurements or distances quoted are approximate and should not be used to value a property or be the basis of any sale or let.





Tenure: Share of Freehold
Term: Expires - 25/03/2177
Service Charge: £5,337 per annum
Council Tax Band: G

Where no figures are shown, we have been unable to ascertain the information. All figures that are shown were correct at the time of printing.

Where no figures are shown, we have been unable to ascertain the information. All figures that are shown were correct at the time of printing. These particulars are not an offer or contract, nor part of one. You should not rely on statements by Winkworth in the particulars or by word of mouth or in writing "information" as being factually accurate about the property, its condition or its value. Winkworth does not have any authority to make any representations about the property, and accordingly any information given is entirely without responsibility on the part of the agents, seller(s) or lessor(s). These particulars are prepared on the basis of the information supplied by our client and are a rough guide for information only. The photographs show only certain parts of the property. We are not able to check all of the information and therefore are unable to guarantee accuracy. All interested parties are therefore advised to undertake all necessary inspections and checks that they deem appropriate. Where displayed, the square footage is taken from the floor plans, which are created by an independent supplier. These measurements are approximate and included for illustrative purposes only. The measurements may vary. Winkworth does not make any representation as to the accuracy of these measurements and you should seek to verify them for yourself. Winkworth accept no liability for any loss you may suffer if you rely on these measurements. All fixtures and fittings, whether fitted or not are deemed removable by the vendor unless stated. Any reference to alterations to, or use of, any part of the property does not mean that any necessary planning, building regulations or other consent has been obtained. Amenities and appliances have not been tested



Maida Vale | 211-213 Sutherland Avenue, London, W9 1RU | 020 7289 1692 | maidavale@winkworth.co.uk

for every step...

winkworth.co.uk/maida-vale

Winkworth wishes to inform prospective buyers and tenants that these particulars are a guide and act as information only. All our details are given in good faith and believed to be correct at the time of printing but they don't form part of an offer or contract. No Winkworth employee has authority to make or give any representation or warranty in relation to this property. All fixtures and fittings, whether fitted or not are deemed removable by the vendor unless stated otherwise and room sizes are measured between internal wall surfaces, including furnishings.