



CHEVENING ROAD, GREENWICH, LONDON, SE10
GUIDE PRICE £1,350,000-£1,375,000 FREEHOLD

A MAGNIFICENT FIVE BEDROOM, DOUBLE FRONTED, VICTORIAN HOUSE THAT IS OFFERED TO THE MARKET IN STUNNING ORDER THROUGHOUT, THAT IS LOCATED IN EAST GREENWICH AND WITHIN THE HALSTOW SCHOOL CATCHMENT AREA.

Greenwich | 02030533033 | greenwich@winkworth.co.uk

Winkworth

winkworth.co.uk

See things differently



DESCRIPTION:

Guide Price £1,350,000-£1,375,000. A magnificent five bedroom, double fronted, Victorian house that is offered to the market in stunning order throughout, that is located in East Greenwich and within the Halstow School Catchment area.

This beautiful family home is set over three floors and measures an impressive 1927 sq ft. The accommodation comprises of a lovely 24ft L-shaped kitchen diner with bifold doors leading onto the garden. The kitchen area has extensive storage and quartz worktops with a central island. This also comes equipped with all the usual white goods one might expect. The ground floor also features a further reception room and a study to the rear, with WC. Upstairs there are five large double bedrooms and three beautifully presented bathrooms. There is ample storage throughout, including 30ft eaves space on the top floor. The rear garden is small but certainly well formed with astroturf and paving areas. Added benefits include bespoke plantation shutters to all front windows.

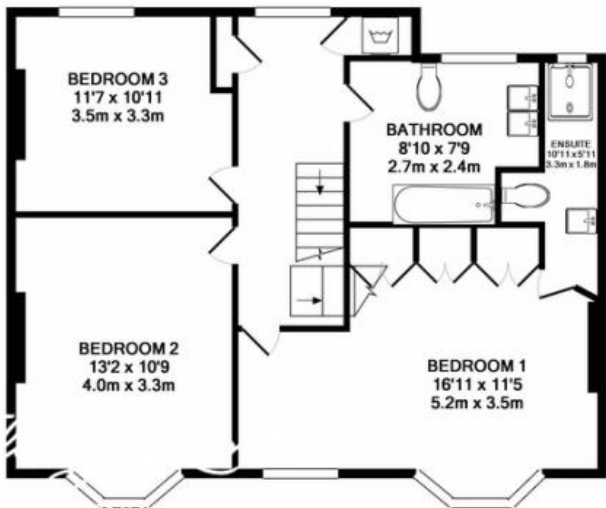
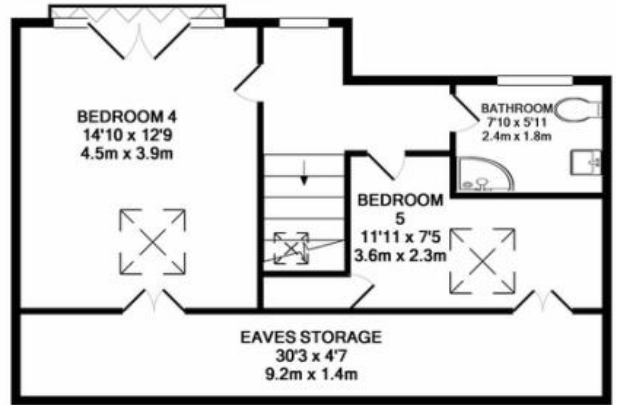
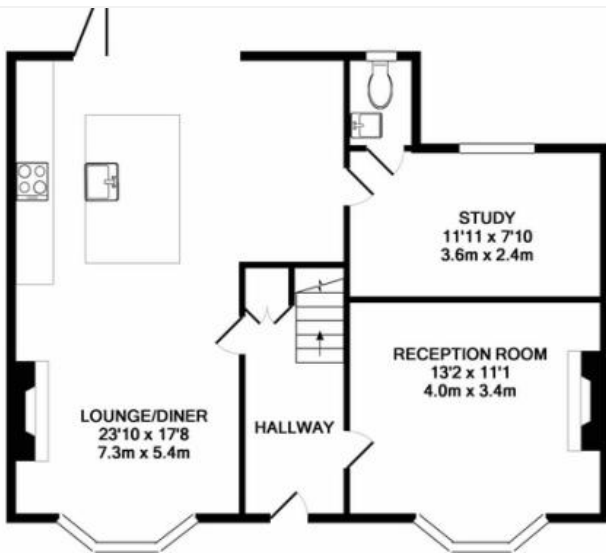
Chevening Road is widely considered one of the best roads in East Greenwich and, as mentioned, is within the Halstow school catchment, but also just moments away from the picturesque Pleasaunce Park and mainline rail on Humber Road. The town centre is also close by which offers a superb array of shops and restaurants, along with DLR, riverboat service and, of course, The Royal Park with its Observatory!

AT A GLANCE

- five bedroom family home
- double fronted Victorian
- superb condition
- large L shaped kitchen diner
- three bathrooms
- circa 1927 sq ft
- two further receptions
- small rear garden
- bespoke plantation shutters
- East Greenwich location
- Halstow School Catchment



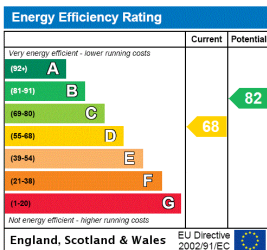




TOTAL APPROX. FLOOR AREA 1927 SQ.FT. (179.0 SQ.M.)

THIS FLOOR PLAN SHOULD BE USED AS A GENERAL OUTLINE FOR GUIDANCE ONLY AND DOES NOT CONSTITUTE IN WHOLE OR IN PART AN OFFER OR CONTRACT. ANY INTENDING PURCHASER OR LESSEE SHOULD SATISFY THEMSELVES BY INSPECTION, SEARCHES, ENQUIRIES AND FULL SURVEY AS TO THE CORRECTNESS OF EACH STATEMENT. ANY AREAS, DISTANCES OR MEASUREMENTS QUOTED ARE APPROXIMATE AND SHOULD NOT BE USED TO VALUE A PROPERTY OR BE THE BASIS OF ANY SALE OR LET.
Made with Metropix ©2019

This floorplan is for illustration purposes only and is not to scale. The position and size of doors, windows, appliances and other features are approximate.



Greenwich | 02030533033 | greenwich@winkworth.co.uk



winkworth.co.uk

See things differently

Winkworth wishes to inform prospective buyers and tenants that these particulars are a guide and act as information only. All our details are given in good faith and believed to be correct at the time of printing but they don't form part of an offer or contract. No Winkworth employee has authority to make or give any representation or warranty in relation to this property. All fixtures and fittings, whether fitted or not are deemed removable by the vendor unless stated otherwise and room sizes are measured between internal wall surfaces, including furnishings.