



BASING STREET, W11
£495 PER WEEK (£2,145.00 PCM) FURNISHED

WE ARE DELIGHTED TO OFFER THIS VERY CHARMING AND BEAUTIFULLY PRESENTED ONE BEDROOM FLAT ON THE RAISED GROUND FLOOR OF THIS PERIOD BUILDING

Notting Hill Lettings | 0207 727 3227 | nottinghill@winkworth.co.uk

Winkworth

for every step...

winkworth.co.uk



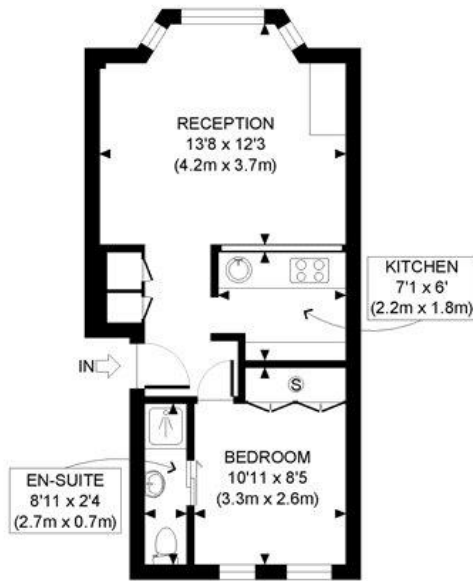
DESCRIPTION:

We are delighted to offer this very charming and beautifully presented one bedroom flat on the raised ground floor of this period building offering high ceilings, wooden floors throughout, immaculate semi open plan kitchen with double bedroom with ensuite shower room located at the back of the property. The property further benefits from fantastic storage and viewings highly recommended.

LOCATION:

Basing Street is a quiet residential street running off Westbourne Park Road, just parallel and to the east of Portobello Road, with many of Notting Hill's most popular shops, bars and restaurants just round the corner. Transport links are not far away with both Ladbroke Grove and Westbourne Park moments away.





RAISED GROUND FLOOR
GROSS INTERNAL
FLOOR AREA 362 SQ FT

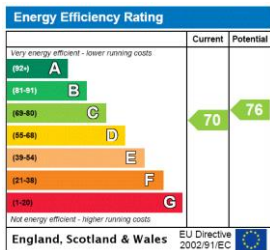
APPROX. GROSS INTERNAL FLOOR AREA: 362 SQ FT/ 34 SQM

Winkworth

This plan is for illustrative purposes only and should be used as such by any prospective client. Whilst every attempt has been made to ensure the accuracy of the Floor Plan contained here, measurements of the doors, windows, rooms and any other items are approximate and no responsibility is taken for any errors, omissions, or misstatement. The services, systems and appliances shown have not been tested and no guarantee as to the operability or efficiency can be given.

PROPERTY PHOTO PLANS.com
RENDERING AND PHOTOGRAPHY

This floorplan is for illustration purposes only and is not to scale. The position and size of doors, windows, appliances and other features are approximate.



Deposit: £2,475

Holding Deposit:

Council Tax Band:

Where no figures are shown, we have been unable to ascertain the information. All figures that are shown were correct at the time of printing.

Notting Hill Lettings | 0207 727 3227 | nottinghill@winkworth.co.uk

Winkworth

for every step...

winkworth.co.uk

Winkworth wishes to inform prospective buyers and tenants that these particulars are a guide and act as information only. All our details are given in good faith and believed to be correct at the time of printing but they don't form part of an offer or contract. No Winkworth employee has authority to make or give any representation or warranty in relation to this property. All fixtures and fittings, whether fitted or not are deemed removable by the vendor unless stated otherwise and room sizes are measured between internal wall surfaces, including furnishings.