



ROE END, LONDON, NW9
£480,000 FREEHOLD

3 BEDROOM SEMI-DETACHED HOME
WITHIN THE EVER-LOVED ROE GREEN VILLAGE

Kingsbury | 020 8204 0000 | kingsbury@winkworth.co.uk

Winkworth

winkworth.co.uk

See things differently



DESCRIPTION: A charming home holding plenty of potential. Its location in the picturesque 'Roe Green Village' conservation area adds to its appeal, offering a serene and tranquil setting away from the hustle and bustle of city life yet only a ten-minute stroll from the heart of Kingsbury.

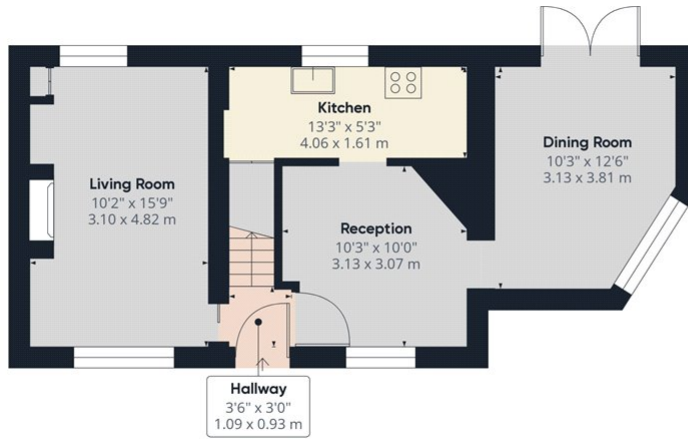
The property has preserved its original character having been loved through generations of its family, and its layout with two reception rooms, a simple kitchen, and a study/third bedroom offers flexibility and convenience for day-to-day family living. The first-floor hosts three bedrooms and a family bathroom providing comfortable living spaces, while the south-facing garden with mature greenery adds a touch of natural beauty and tranquillity to the residence. Its proximity to local amenities, transport links, schools, and places of worship makes it a practical choice for families or individuals looking for convenience without sacrificing the charm of village living. Overall, this property seems like a rare find and viewing is recommended for anyone seeking a canvas to make their own in a desirable location.



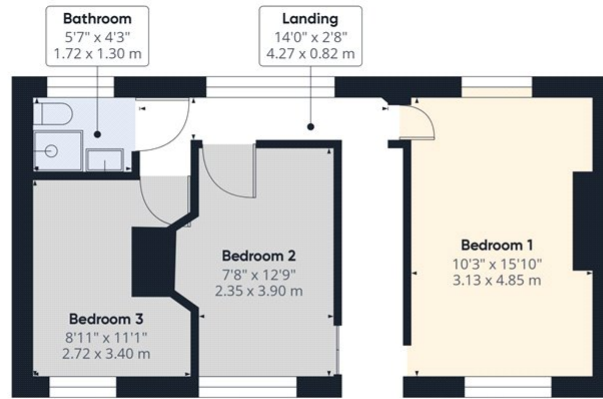
Winkworth



Winkworth



Ground Floor



Floor 1

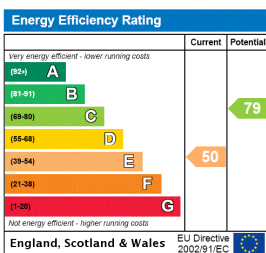
Approximate total area⁽¹⁾
861.8 ft²
80.06 m²

(1) Excluding balconies and terraces

While every attempt has been made to ensure accuracy, all measurements are approximate, not to scale. This floor plan is for illustrative purposes only.

GIRAFFE360

This floorplan is for illustration purposes only and is not to scale. The position and size of doors, windows, appliances and other features are approximate.



Kingsbury | 020 8204 0000 | kingsbury@winkworth.co.uk

