



OXFORD ROAD, BERKSHIRE, RG41  
**£1,350,000 FREEHOLD**

**Winkworth**



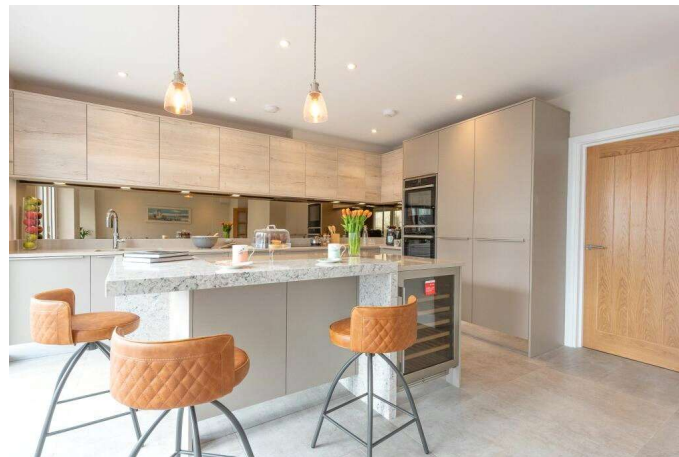


OXFORD ROAD, BERKSHIRE, RG41

**This Luxury New Build Home is available for an early off plan reservation enabling you to observe your new home being constructed. The sizeable accommodation extends to just over 2500 sq.ft. of living space with an additional large garden outbuilding.**

**The mainline railway station is a five minute stroll away and the fantastic regenerated town centre is just beyond which now boasts an eclectic range of shops, restaurants and bars, an Everyman cinema, bowling alley and a health and fitness centre.**

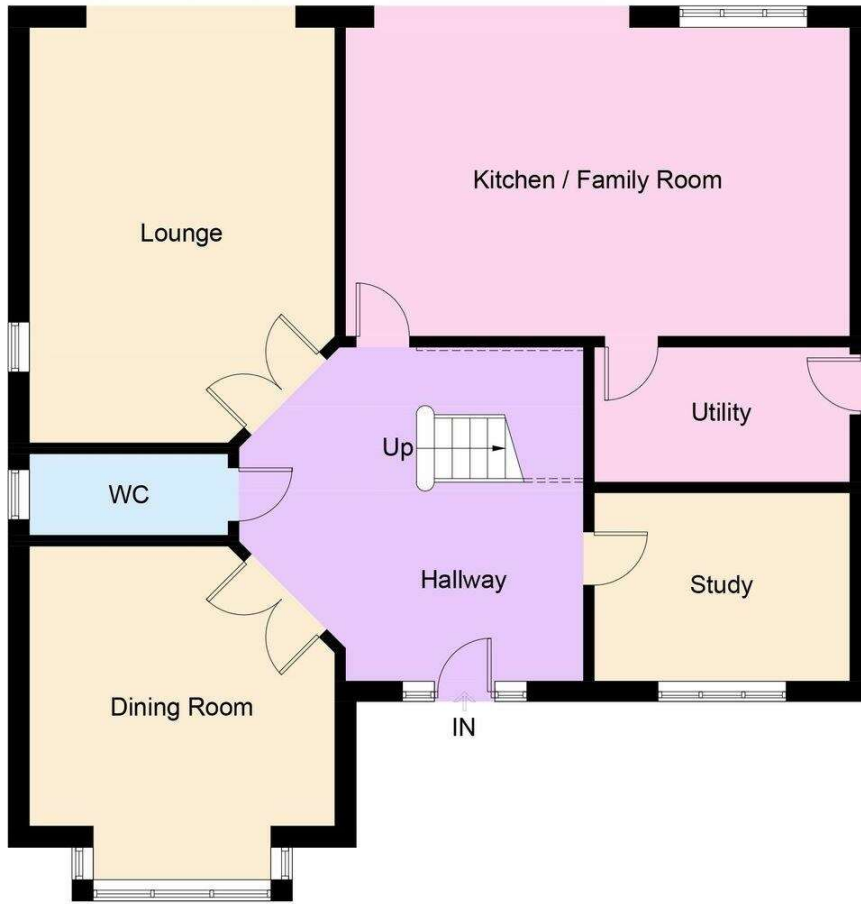
**\*photographs of similar homes built by the developer**





# Oxford Road

Approximate Gross Internal Area = 234.0 sq m / 2519 sq ft



**Ground Floor**  
1261 Sq ft



**First Floor**  
1258 Sq ft

Illustration for identification purposes only, measurements are approximate, not to scale. FloorplansUsketch.com © 2022 (ID947755)

Wokingham | 01189 072777 | wokingham@winkworth.co.uk

winkworth.co.uk

Winkworth wishes to inform prospective buyers and tenants that these particulars are a guide and act as information only. All our details are given in good faith and believed to be correct at the time of printing but they don't form part of an offer or contract. No Winkworth employee has authority to make or give any representation or warranty in relation to this property. All fixtures and fittings, whether fitted or not are deemed removable by the vendor unless stated otherwise and room sizes are measured between internal wall surfaces, including furnishings.

