



**RASPER ROAD, WHETSTONE, LONDON, N20
OFFERS IN EXCESS OF £500,000 FREEHOLD**

A WELL-PRESENTED TWO BEDROOM COTTAGE STYLE HOUSE SET IN A QUIET N20 LOCATION

Finchley | 020 8349 3388 | finchley@winkworth.co.uk

Winkworth

for every step...

winkworth.co.uk



DESCRIPTION:

A beautifully presented two bedroom cottage style terraced house ideally situated for both Whetstone and North Finchley High Road amenities. The property comprises of open plan kitchen/living/dining room and bathroom to the ground floor, with two bedrooms to the first floor. Externally there is a rear courtyard with paved patio area. Offered on a chain free basis.

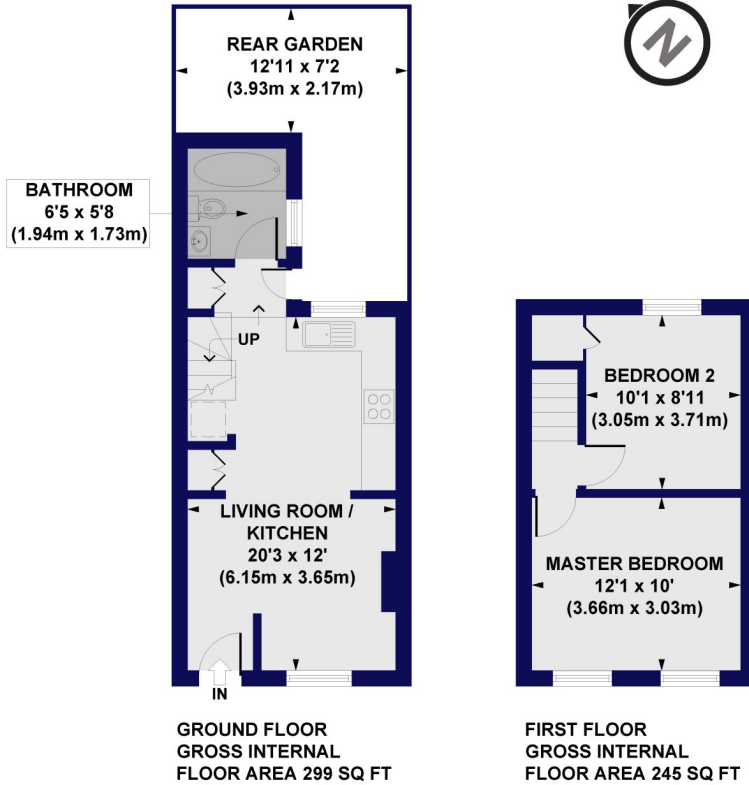
AT A GLANCE

- Cottage style terraced house
- Open plan living/dining/kitchen
- Two bedrooms
- Downstairs bathroom
- Paved patio courtyard
- Chain Free





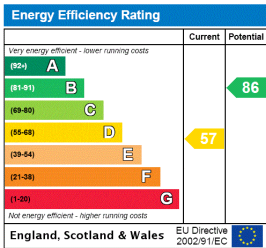
Rasper Road, N20
Approx. Gross Internal Floor Area 544 sq. ft / 50.57 sq. m



All measurements of walls, doors, windows, fittings and appliances, including their size and location, are shown as standard sizes and do not constitute any warranty or representation by the seller, their agent or CP Creative. Any intending purchaser must satisfy himself by inspection or otherwise as to the correctness of the information contained in these plans. This plan is for illustrative purposes only and should be used as such by any prospective purchasers.

Winkworth

This floorplan is for illustration purposes only and is not to scale. The position and size of doors, windows, appliances and other features are approximate.



Winkworth

Finchley | 020 8349 3388 | finchley@winkworth.co.uk

for every step...

winkworth.co.uk

Winkworth wishes to inform prospective buyers and tenants that these particulars are a guide and act as information only. All our details are given in good faith and believed to be correct at the time of printing but they don't form part of an offer or contract. No Winkworth employee has authority to make or give any representation or warranty in relation to this property. All fixtures and fittings, whether fitted or not are deemed removable by the vendor unless stated otherwise and room sizes are measured between internal wall surfaces, including furnishings.