



15 LINK HOUSE

LINK ROAD NEWBURY RG14 7LS

A spacious, two double bedroom, top floor apartment close to the town centre.

The apartment has reception hall, sitting/ dining room, a really good sized kitchen with room for a table, storeroom/ utility, two double bedrooms and shower room.

There are communal gardens, parking and security entryphone.



Winkworth

AT A GLANCE

818 Square feet/ 75 square metres
Two double bedrooms
Sitting/ dining room
Kitchen with room for a table
Storeroom
Bathroom
Electric heating

UTILITIES

Mains water, electricity, drainage.
Electric heating
West Berkshire Council Band C
EPC D

LEASEHOLD DETAILS

Approx 86 years lease remaining.
Ground rent £10 pa.
Service charge £758pa.
Block managers Sovereign Housing
Lease copy available on request.

SITUATION

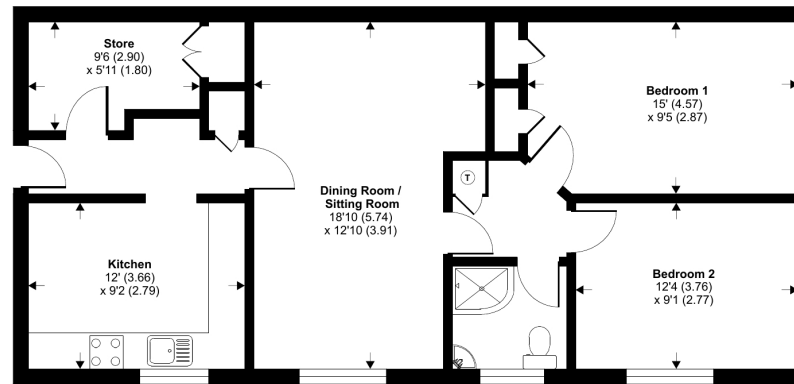
The property is situated in the heart of Newbury
and a stone's throw from the station.

DIRECTIONS

For sat nav RG14 7LS
What Three Words///animal.drums.green

Link Road, Newbury, RG14

Approximate Area = 818 sq ft 75.9 sq m
For identification only - Not to scale



GROUND FLOOR



Floor plan produced in accordance with RICS Property Measurement Standards incorporating International Property Measurement Standards (IPMS2 Residential). © nichem 2022. Produced for Winkworth. REF: 878359



Newbury Office

43 Northbrook Street, Newbury, Berkshire RG14 1DT
01635 552552 | newbury@winkworth.co.uk

winkworth.co.uk/newbury

Winkworth

See things differently.