



LADBROKE GARDENS, W11

£875 PER WEEK (£3,791.66 PCM) Unfurnished

A STUNNING AND TOTALLY REFURBISHED ONE BEDROOM FLAT ON THE FIRST FLOOR WITH LOVELY VIEWS UP STANLEY CRESCENT.

1 Bedroom, 1 Reception Room, 1 Bathroom, Flat/Apartment, Balcony, Communal Gardens, Unfurnished, 610 Approx Sq Ft Energy Efficiency Rating: 69





DESCRIPTION:

A stunning and totally refurbished one bedroom flat on the first floor with lovely views up Stanley Crescent and use of the communal gardens. The flat not only has wonderful ceiling height and wood floors throughout, it also has a fully fitted open plan kitchen and the double bedroom looks out onto the communal gardens (right to apply and charges may apply). Available unfurnished and viewings are highly recommended.

LOCATION:

One of the most sought-after addresses in Notting Hill, Stanley Gardens runs East to West and is a short walk from the tube station at Notting Hill Gate on the central Line. Just around the corner is Westbourne Grove which boasts an array of shops, restaurants, and boutiques, as well as the famous Portobello Market that crosses it.

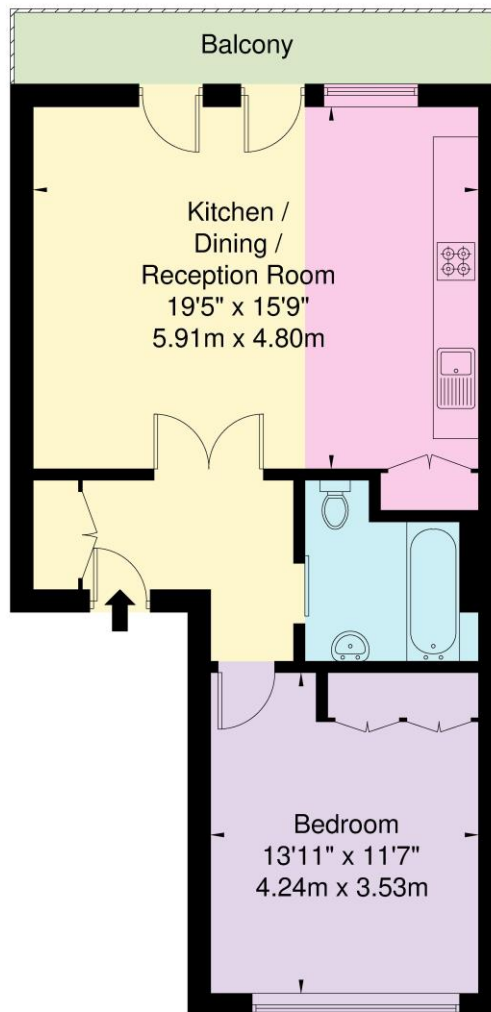
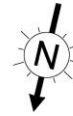
LOCAL AUTHORITY AND COUNCIL TAX BAND:

Royal Borough Of Kensington & Chelsea - F



Ladbroke Gardens W11 2PT

Approx Gross Internal Area = 56.7 sq m / 610 sq ft



First Floor

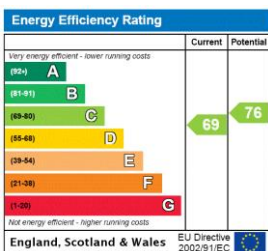
Ref

Copyright **BLEU PLAN**

The Floor plan is not to scale and measurements and areas shown are approximate and therefore should be used for illustrative purposes only. The plan has been prepared in accordance with the RICS code of Measuring Practice and whilst we have confidence in the information produced it must not be relied on. If there is any aspect of particular importance, you should carry out or commission your own inspection of the property.

Copyright @ BLEUPLAN

This floorplan is for illustration purposes only and is not to scale. The position and size of doors, windows, appliances and other features are approximate.



Notting Hill | 0207 727 3227 | nottinghill@winkworth.co.uk



winkworth.co.uk

for every step...

winkworth wishes to inform prospective buyers and tenants that these particulars are a guide and act as information only. All our details are given in good faith and believed to be correct at the time of printing but they don't form part of an offer or contract. No winkworth employee has authority to make or give any representation or warranty in relation to this property. All fixtures and fittings, whether fitted or not are deemed removable by the vendor unless stated otherwise and room sizes are measured between internal wall surfaces, including furnishings.