



BEATTY ROAD, LONDON, N16
£585,000 SHARE OF FREEHOLD

CHARMING TWO BEDROOM, GROUND FLOOR
FLAT ON QUIET TREE-LINED STREET.

Stoke Newington | | stokenewington@winkworth.co.uk

Winkworth

winkworth.co.uk

See things differently



DESCRIPTION:

Offered with a share of freehold, this stunning lateral warehouse conversion is part of a former textiles factory on Beatty Road. Upon entering, you are greeted by a well-proportioned, open-plan living and kitchen area which is flooded with an abundance of natural light. With ample room for both relaxation and dining, the space is versatile and perfect for both entertaining and relaxing. The property features a spacious master bedroom with a walk-in wardrobe and a sleek en-suite bathroom. With a second generously-sized double bedroom and a stylish family bathroom, the property is suited comfortably to both young professionals and families. To the rear, the flat also benefits from access to a pretty, private patio.

Beatty road is nestled in the heart of N16, amongst a number of wonderful neighbouring Victorian streets. Closeby is the popular and close-knit community of Stoke Newington Church Street, offering an array of independent shops, cafes and bars.

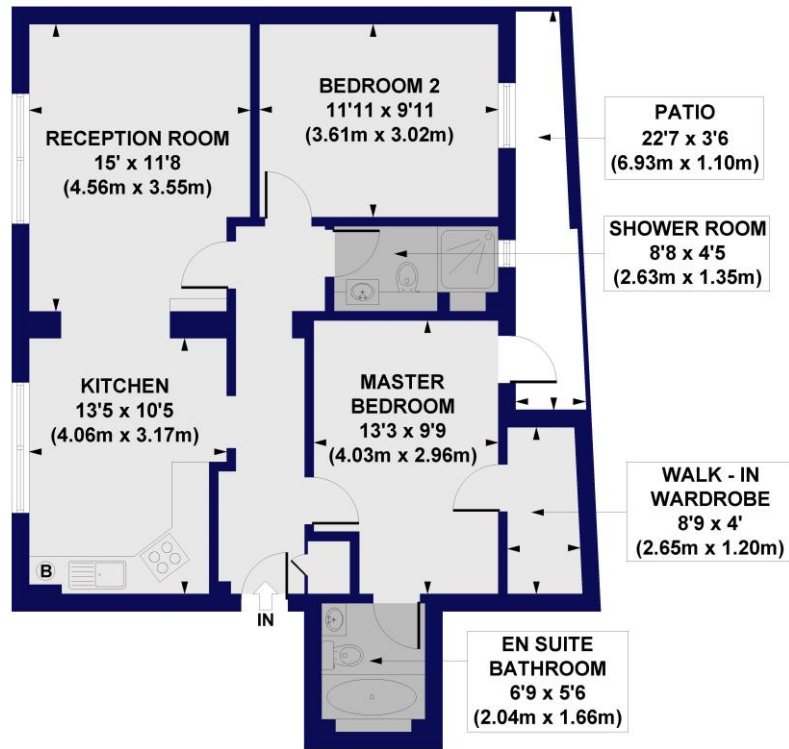
Butterfield Green is also located at the end of the road and the more expansive green space of Clissold Park sits 0.7 miles away. Transport links are well serviced with a number of excellent bus routes on hand and overground services from Rectory road providing direct access to Liverpool Street whilst Dalston provides links to West and East London.

Winkworth



Winkworth

Beatty Road, N16
Approx. Gross Internal Floor Area 810 sq. ft / 75.23 sq. m

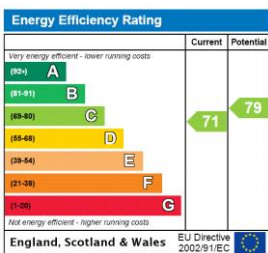


GROUND FLOOR

All measurements of walls, doors, windows, fittings and appliances, including their size and location, are shown as standard sizes and do not constitute any warranty or representation by the seller, their agent or CP Creative. Any intending purchaser must satisfy himself by inspection or otherwise as to the correctness of the information contained in these plans. This plan is for illustrative purposes only and should be used as such by any prospective purchasers.

Winkworth

This floorplan is for illustration purposes only and is not to scale. The position and size of doors, windows, appliances and other features are approximate.



Stoke Newington | stokenewington@winkworth.co.uk



winkworth.co.uk

See things differently

Winkworth wishes to inform prospective buyers and tenants that these particulars are a guide and act as information only. All our details are given in good faith and believed to be correct at the time of printing but they don't form part of an offer or contract. No Winkworth employee has authority to make or give any representation or warranty in relation to this property. All fixtures and fittings, whether fitted or not are deemed removable by the vendor unless stated otherwise and room sizes are measured between internal wall surfaces, including furnishings.