



GOODHALL STREET, LONDON, NW10
£2,250 PER MONTH UNFURNISHED

QUAINT TWO BEDROOM COTTAGE WITH PRIVATE GARDEN

North Kensington | 020 7792 5000 | northkensington@winkworth.co.uk

Tenant Fees Apply: Details of fees for tenant referencing, tenancy agreement admin fees and renewal fees are available on the Winkworth website and the link can be found with the displayed rent for the property. Tenants should ensure they are fully conversant with these upfront fees and other costs that are involved at the outset of the tenancy before making an offer to rent and your local Winkworth office will provide written details upon request.

winkworth.co.uk

Winkworth

for every step...



This spacious terraced house has benefitted from a recent refurbishment and has an abundance of character and charm.

Comprises a gorgeous double aspect reception and kitchen dining area, utility room /office space, two spacious double bedrooms, modernised bathroom, and private garden.

Additional benefits are access to a stunning and well maintained communal "secret Garden" that is exclusively used by the residents of Goodhall Street.

Available early April 2024

AT A GLANCE

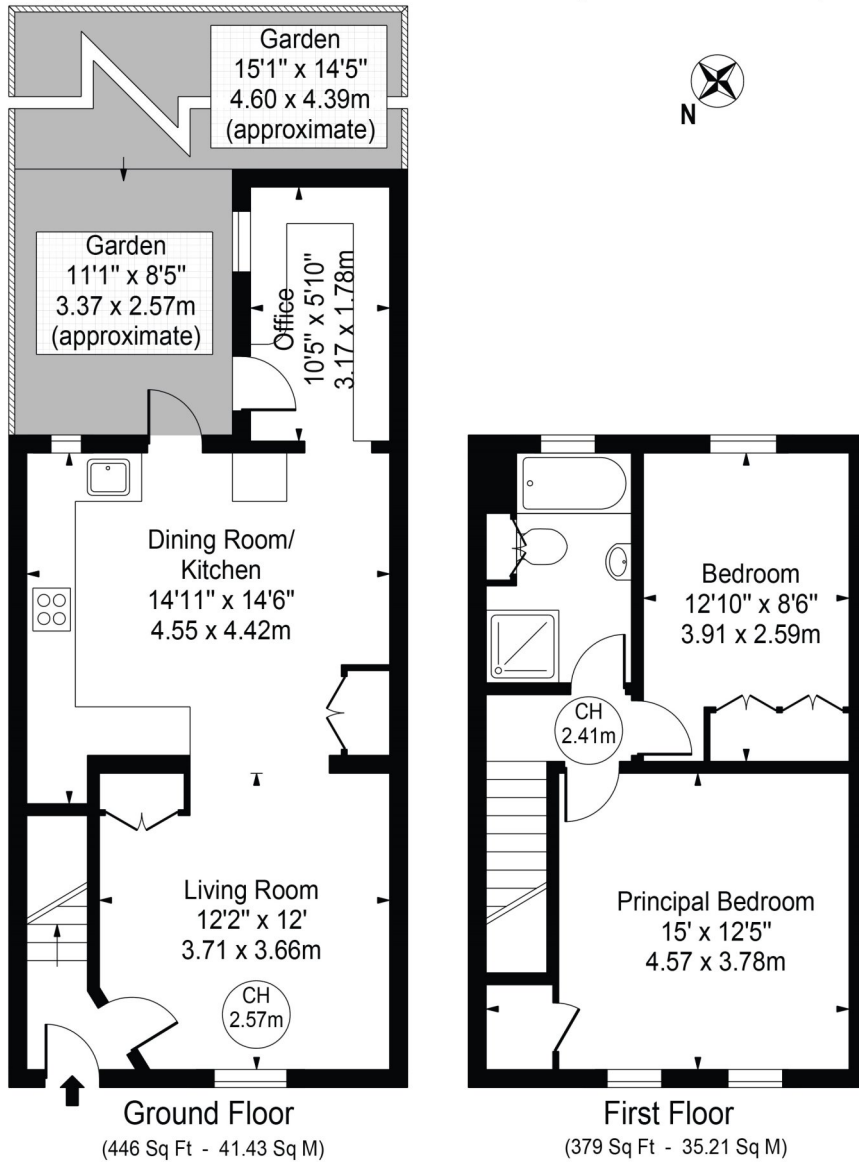
- GREAT LOCATION
- MODERN
- SPACIOUS
- CLOSE TO TRANSPORT LINKS
- UNFURNISHED





Goodhall Street

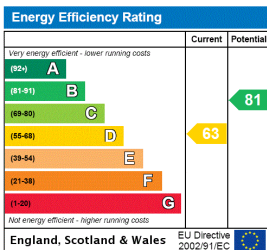
Approx. Gross Internal Area 825 Sq Ft - 76.65 Sq M



For Illustration Purposes Only - Not To Scale

This floor plan should be used as a general outline for guidance only and does not constitute in whole or in part an offer or contract. Any intending purchaser or lessee should satisfy themselves by inspection, searches, enquiries and full survey as to the correctness of each statement. Any areas, measurements or distances quoted are approximate and should not be used to value a property or be the basis of any sale or let. Copyright Morriarti Photography & Design LTD

This floorplan is for illustration purposes only and is not to scale. The position and size of doors, windows, appliances and other features are approximate.



Deposit: £0.00

Council Tax Band: D

Where no figures are shown, we have been unable to ascertain the information. All figures that are shown were correct at the time of printing.

North Kensington | 020 7792 5000 | northkensington@winkworth.co.uk



for every step...

winkworth.co.uk

Winkworth wishes to inform prospective buyers and tenants that these particulars are a guide and act as information only. All our details are given in good faith and believed to be correct at the time of printing but they don't form part of an offer or contract. No Winkworth employee has authority to make or give any representation or warranty in relation to this property. All fixtures and fittings, whether fitted or not are deemed removable by the vendor unless stated otherwise and room sizes are measured between internal wall surfaces, including furnishings.