



**LORDSHIP LANE, EAST DULWICH, LONDON, SE22**  
**OIEO £1,150,000 FREEHOLD**

**A NEWLY REFURBISHED, DOUBLE-FRONTED  
HOUSE, SITUATED IN SE22 AND WITHIN A  
STONE'S THROW OF DULWICH PARK.**

Dulwich | 020 8299 2722 | [dulwich@winkworth.co.uk](mailto:dulwich@winkworth.co.uk)

Tenure Freehold | Council Tax Band D – London Borough of Southwark |

**Winkworth**

[winkworth.co.uk](http://winkworth.co.uk)

See things differently



## DESCRIPTION:

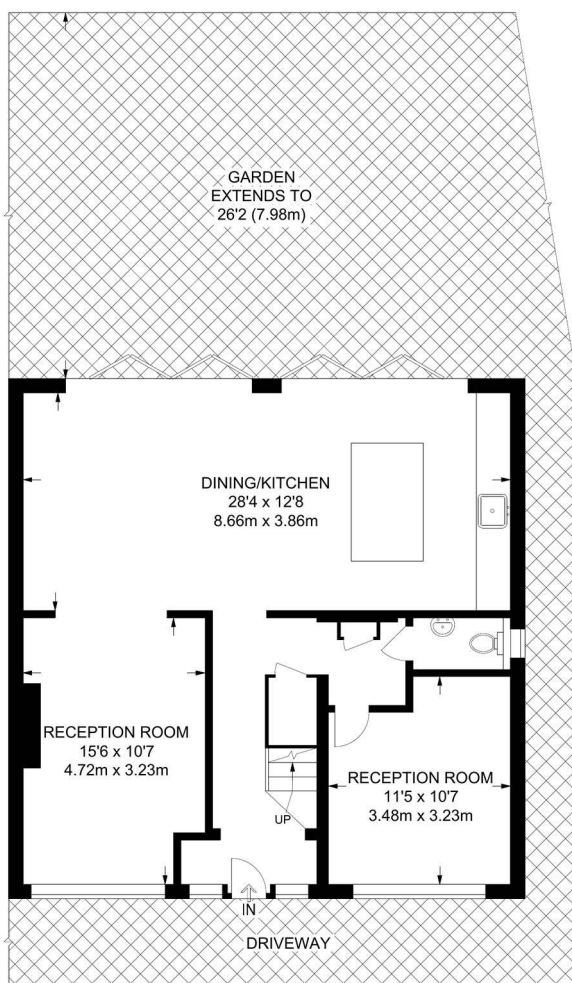
Newly renovated from top to bottom is this fantastic five, double-bedroom home. Boasting two spacious receptions, a large open-plan kitchen/diner, downstairs W/C and a large tiered garden. The first floor comprises four spacious doubles and a family bathroom. The loft has been converted to provide an impressive master suite, boasting a walk-in wardrobe, spacious shower room and impressive views. The property further benefits from off-street parking. The location offers fantastic access to both Lordship Lane and Dulwich Village for their impressive array of shops, bars and restaurants. Transport links are fantastic, multiple bus connections on the doorstep provide easy access in to the city. Alternatively a short walk to either Forest Hill station for the East London line or East Dulwich station for direct links to London Bridge. School catchments are in abundance with Goodrich, Heber and a couple of village options for primary, you will be sure to have a good selection.

## AT A GLANCE

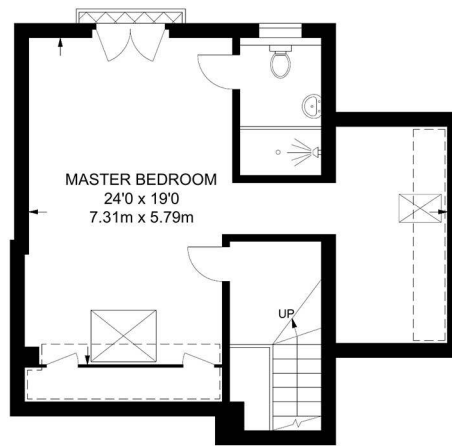
- Five Double Bedrooms
- Semi-Detached Double Fronted House
- Two Spacious Reception Rooms
- Large Open-Plan Kitchen-Diner
- Two Bathrooms & Downstairs Cloakroom
- Off-Street Parking
- Newly Renovated
- Chain Free



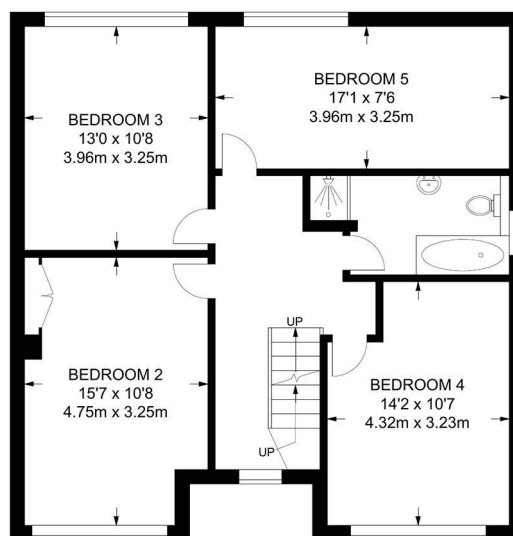




**GROUND FLOOR**  
810 SQ FT / 75.3 SQ M



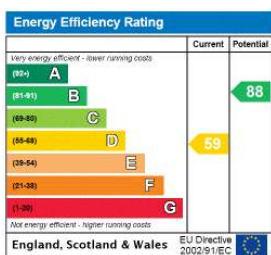
**SECOND FLOOR**  
464 SQ FT / 43.1 SQ M



**FIRST FLOOR**  
788 SQ FT / 73.2 SQ M

**APPROXIMATE GROSS INTERNAL AREA**  
2062 SQ FT / 191.6 SQ M

This floorplan is for illustration purposes only and is not to scale. The position and size of doors, windows, appliances and other features are approximate.



Dulwich | 020 8299 2722 | dulwich@winkworth.co.uk



winkworth.co.uk

See things differently

Winkworth wishes to inform prospective buyers and tenants that these particulars are a guide and act as information only. All our details are given in good faith and believed to be correct at the time of printing but they don't form part of an offer or contract. No Winkworth employee has authority to make or give any representation or warranty in relation to this property. All fixtures and fittings, whether fitted or not are deemed removable by the vendor unless stated otherwise and room sizes are measured between internal wall surfaces, including furnishings.