



HINDMANS ROAD, EAST DULWICH, SE22
£675,000 SHARE OF FREEHOLD

**THIS IS A FANTASTIC BRIGHT AND SPACIOUS
TWO-DOUBLE BEDROOM SPLIT LEVEL FLAT
WITH PLENTY OF CHARM AND CHARACTER.**

Dulwich | 020 8299 2722 | dulwich@winkworth.co.uk

Winkworth

winkworth.co.uk

See things differently



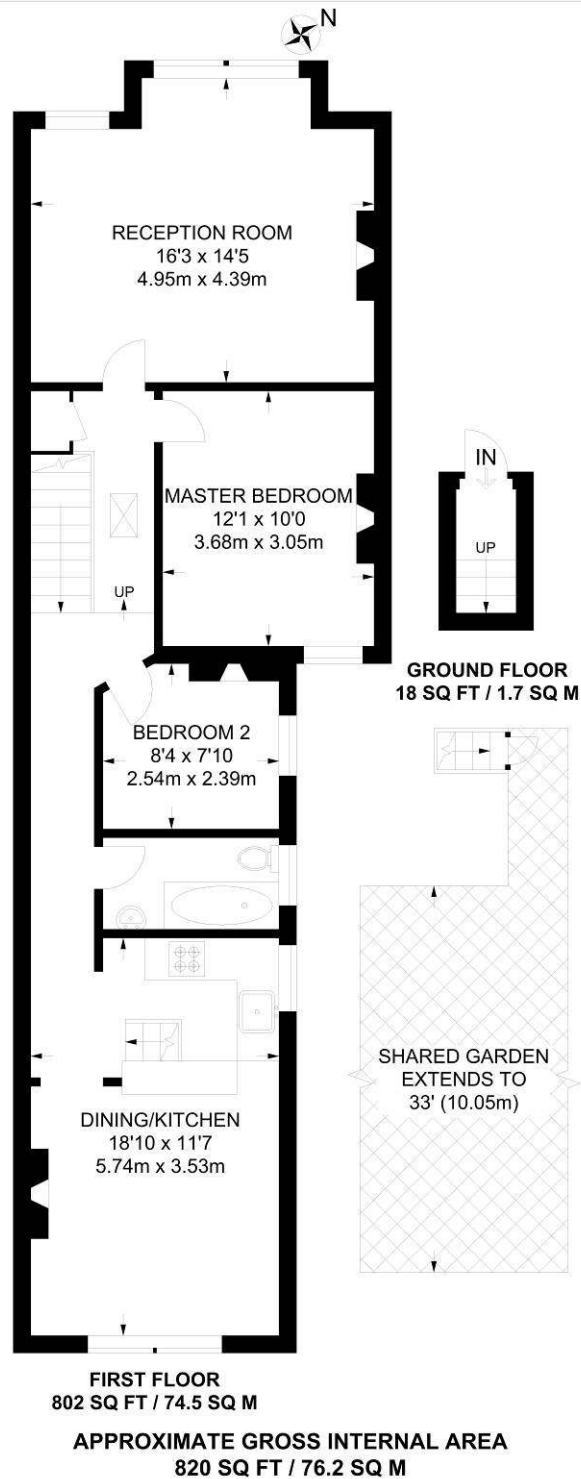
DESCRIPTION:

This is a fantastic bright and spacious two-double bedroom flat with plenty of charm and character offered to the market chain free. Two double bedrooms, eat in kitchen-diner, huge reception and direct access to a shared garden. The property is located on a quiet residential street within easy reach of East Dulwich Station and its links to Central London. The local bars and restaurants on Lordship Lane are a short walk away as are the wide-open spaces of Peckham Rye Park.

AT A GLANCE

- Two Double Bedrooms
- Second Floor Flat
- Reception Room
- Eat-in Kitchen-Diner
- Shared Garden
- Share of Freehold
- Chain Free
- Loft Space





This floorplan is for illustration purposes only and is not to scale. The position and size of doors, windows, appliances and other features are approximate.

Energy Efficiency Rating		Current	Potential
Very energy efficient - lower running costs			
(92)	A		
(81-91)	B		
(69-80)	C		
(55-68)	D	63	67
(39-54)	E		
(21-38)	F		
(1-20)	G		
Not energy efficient - higher running costs			
England, Scotland & Wales		EU Directive 2002/91/EC	

Dulwich | 020 8299 2722 | dulwich@winkworth.co.uk



winkworth.co.uk

See things differently

Winkworth wishes to inform prospective buyers and tenants that these particulars are a guide and act as information only. All our details are given in good faith and believed to be correct at the time of printing but they don't form part of an offer or contract. No Winkworth employee has authority to make or give any representation or warranty in relation to this property. All fixtures and fittings, whether fitted or not are deemed removable by the vendor unless stated otherwise and room sizes are measured between internal wall surfaces, including furnishings.