



LEIGHAM COURT ROAD, SW16
£2,200 PER MONTH UNFURNISHED

AN EXCEPTIONALLY SPACIOUS, RAISED
GROUND FLOOR CONVERSION APARTMENT
IN AN IMPOSING DETACHED VICTORIAN
VILLA, A STONE'S THROW FROM STREATHAM
HILL STATION

Streatham Hill | 0208 769 6699 | streatham@winkworth.co.uk

Winkworth

for every step...

winkworth.co.uk



DESCRIPTION:

The property is set back from the road with a large front courtyard for residents' exclusive parking and there is a rather grand main entrance hall with many original features from this exuberant high Victorian period of architecture. The apartment briefly comprises of a semi-open plan living space - a large 20'6ft x 27'6ft. reception area which seamlessly connects onto a 13'11ft. x 9'3ft. kitchen/dining room which is equipped with the usual integrated appliances and plenty of wall and base units for ample storage. The front reception room is neutrally decorated in white and has wonderfully high ceilings and large sash windows, perfect for flooding in natural light. There are two good-size double bedrooms, and the principal bedroom has parquet flooring, a separate walk-in wardrobe area and an en-suite shower room with a wash hand basin and a WC. There is also a large modern bathroom with natural stone tiling and white sanitary ware which includes a bath with a shower overhead, a wash hand basin and a WC. Transport at Streatham Hill (London Victoria in 17 minutes) is within easy walking distance and Brixton Tube is just a short bus ride down the hill. On the doorstep there are all the local amenities that make Streatham Hill such a sought-after neighbourhood including many lively independent shops, cafes and restaurants. Hillside Gardens park is at the top of the street and both the large green open spaces of Streatham and Tooting Bec Commons are within easy reach in either direction from the front door. This property is offered unfurnished and is available now.

AT A GLANCE

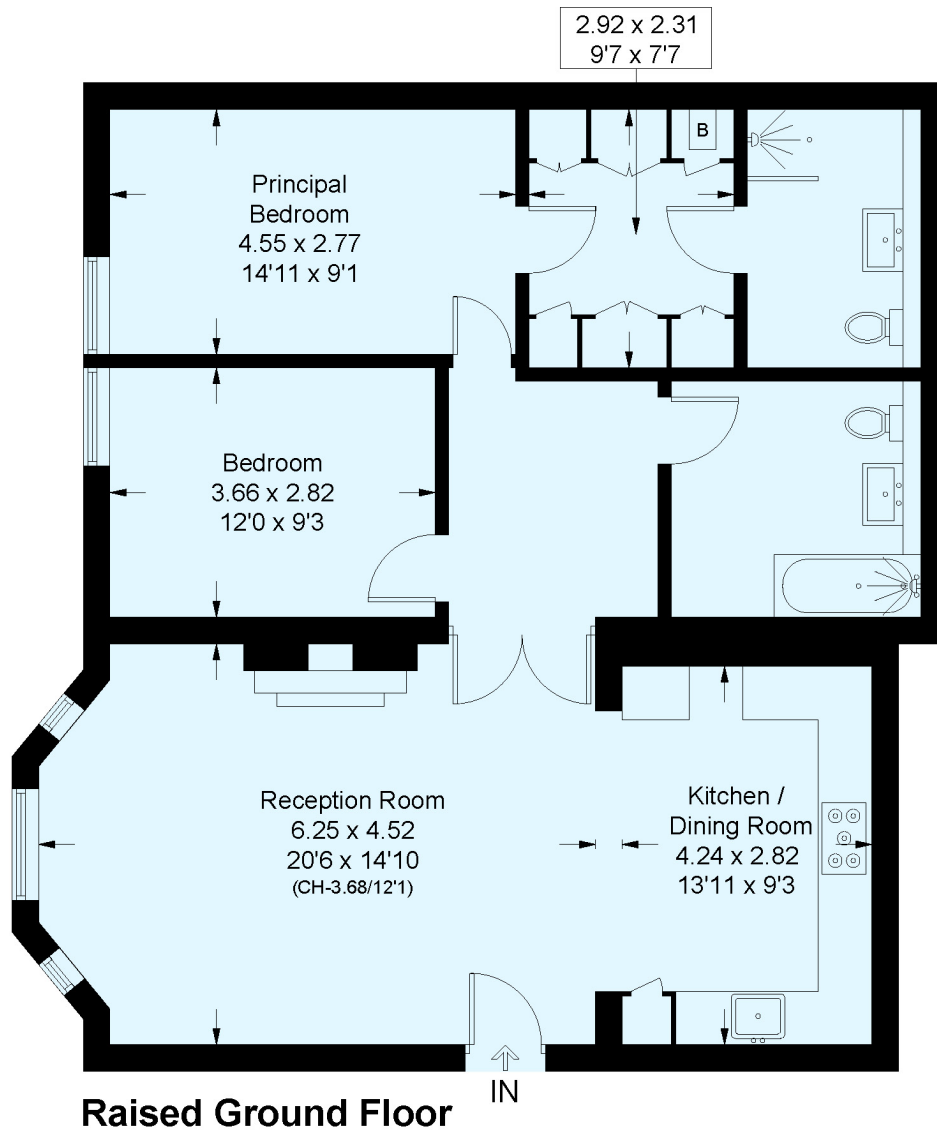
- Detached Victorian House
- Raised Ground Floor
- Two Double Bedrooms
- Shower Room & Bathroom
- Large Semi-Open Plan Kitchen/Dining/Reception Room
- Private Off-Street Parking
- Lambeth Council Tax Band: C
- Unfurnished
- Available Now





Leigham Court Road, SW16

Approximate Floor Area = 95.8 sq m / 1031 sq ft
Including Limited Use Area (0.8 sq m / 9 sq ft)



Raised Ground Floor

This plan is for layout guidance only. Not drawn to scale unless stated. Windows and door openings are approximate. Whilst every care is taken in the preparation of this plan, please check all dimensions, shapes and compass bearings before making any decisions reliant upon them. (ID788437)

This floorplan is for illustration purposes only and is not to scale. The position and size of doors, windows, appliances and other features are approximate.

Energy Efficiency Rating		Current	Potential
Very energy efficient - lower running costs			
(92-100) A			
(81-91) B			
(69-80) C		75	76
(55-68) D			
(39-54) E			
(21-38) F			
(1-20) G			
Not energy efficient - higher running costs			
England, Scotland & Wales		EU Directive 2002/91/EC	

Herne Hill | 0207 501 8950 | hernehill@winkworth.co.uk



for every step...

winkworth.co.uk

Winkworth wishes to inform prospective buyers and tenants that these particulars are a guide and act as information only. All our details are given in good faith and believed to be correct at the time of printing but they don't form part of an offer or contract. No Winkworth employee has authority to make or give any representation or warranty in relation to this property. All fixtures and fittings, whether fitted or not are deemed removable by the vendor unless stated otherwise and room sizes are measured between internal wall surfaces, including furnishings.