



Woolslope Road, West Moors
Ferndown BH22 0PD
Guide Price £415,000





GUIDE PRICE £415, 000
FREEHOLD

This stunning, fully modernised light and spacious three bedroom detached bungalow has been completely renovated by the current owners including the installation of a luxury kitchen and shower room and a fabulous landscaped garden.

The property is tucked away in a peaceful residential area close to heathland on the fringe of the popular Village of West Moors. Further benefits include a modern solar panel system which is owned outright and provides very low running costs, a garage and designated parking area.

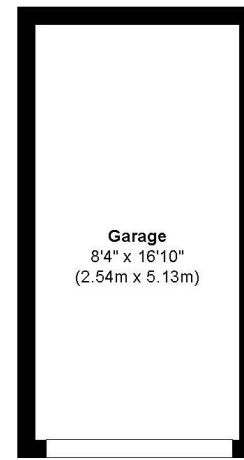
**Luxury Kitchen & Shower Room
Stunning Interior
Landscaped Garden With Pergola
Three Bedrooms
Detached Bungalow
Sought After Peaceful Location
Designated Parking
Garage
Solar Panel System
Modernised Throughout**

EPC D | Council Tax Band D

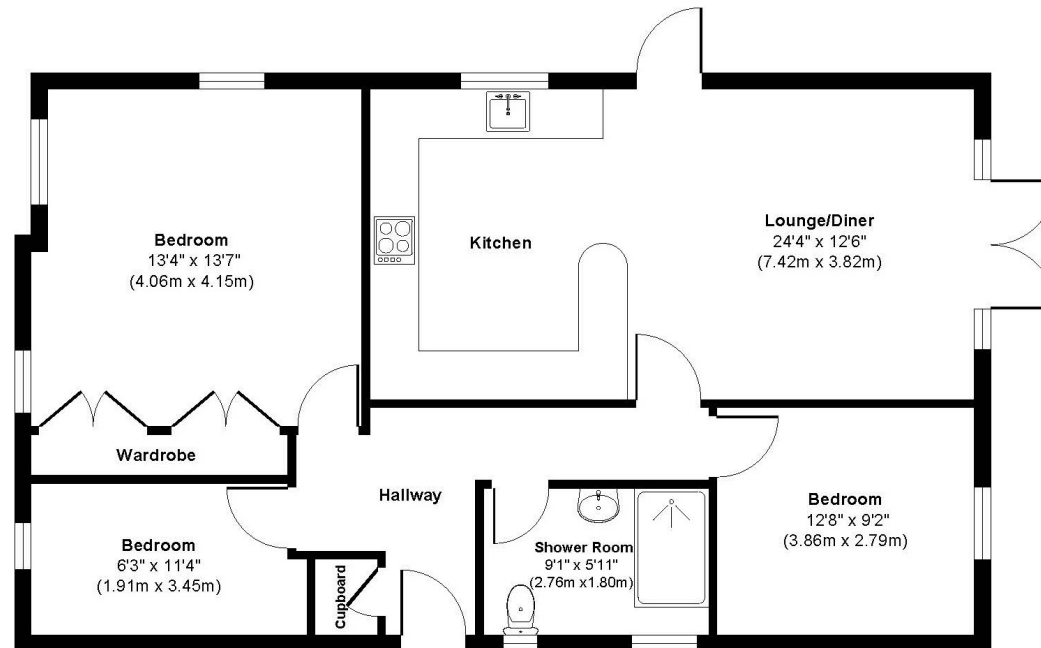
01202 434365
ferndown@winkworth.co.uk







(Not In Position)



Approx. Gross Internal Floor Area 833 sq. ft / 77.36 sq. m
Garage Area 140 sq. ft / 13.03 sq. m

Illustration for identification purposes only, measurements approximate and not to scale.



LOCATION

Positioned in a peaceful residential location just a short walk from open heathland, and only moments from the A31 which provides quick access to the New Forest, Southampton and London for the commuter by car. There are bus routes close by giving you easy access to Bournemouth, Poole and Wimborne all of which have an excellent range of shops, bars, restaurants and leisure facilities. The property is conveniently located within walking distance of West Moors high street and the ever popular Moors Valley Country Park and Snowtrax Alpine Activity Centre are a short drive away. Award winning beaches are also nearby and for the keen golfer, several of Dorset's premier golf clubs are within easy reach.

Winkworth Ferndown

406 Ringwood Road, Ferndown, Dorset, BH22 9AU

01202 434365 | ferndown@winkworth.co.uk

winkworth.co.uk/ferndown

Winkworth