

VICTORIA YARD, FAIRCLOUGH STREET, LONDON, E1
£850,000 FREEHOLD

A MODERN FREEHOLD THREE BEDROOM, THREE BATHROOM HOUSE WITH PRIVATE GARAGE

Shoreditch | 020 7749 7650 | shoreditch@winkworth.co.uk

Winkworth

winkworth.co.uk

See things differently



DESCRIPTION:

An immaculate end of terrace, freehold three-bedroom, three-bathroom house with private garage, over 1600 sq. ft., split over three levels in a secure gated development only 0.4 miles from Aldgate East station.

The first floor includes a large open plan reception and kitchen with modern appliances. The second floor offers two double bedrooms, one with en-suite shower room and a further family bathroom. The top floor boasts a loft style bedroom with an en-suite shower room and spiral staircase leading to a free-standing bath adding to the uniqueness of this property.

With private garage, within secured gated development, this wonderful property offers a truly secure and peaceful residence space. Located in Victoria Yard, Fairclough Street on the edge of The City, Aldgate East, Tower Hill and Liverpool Street stations are all within easy access.

Winkworth

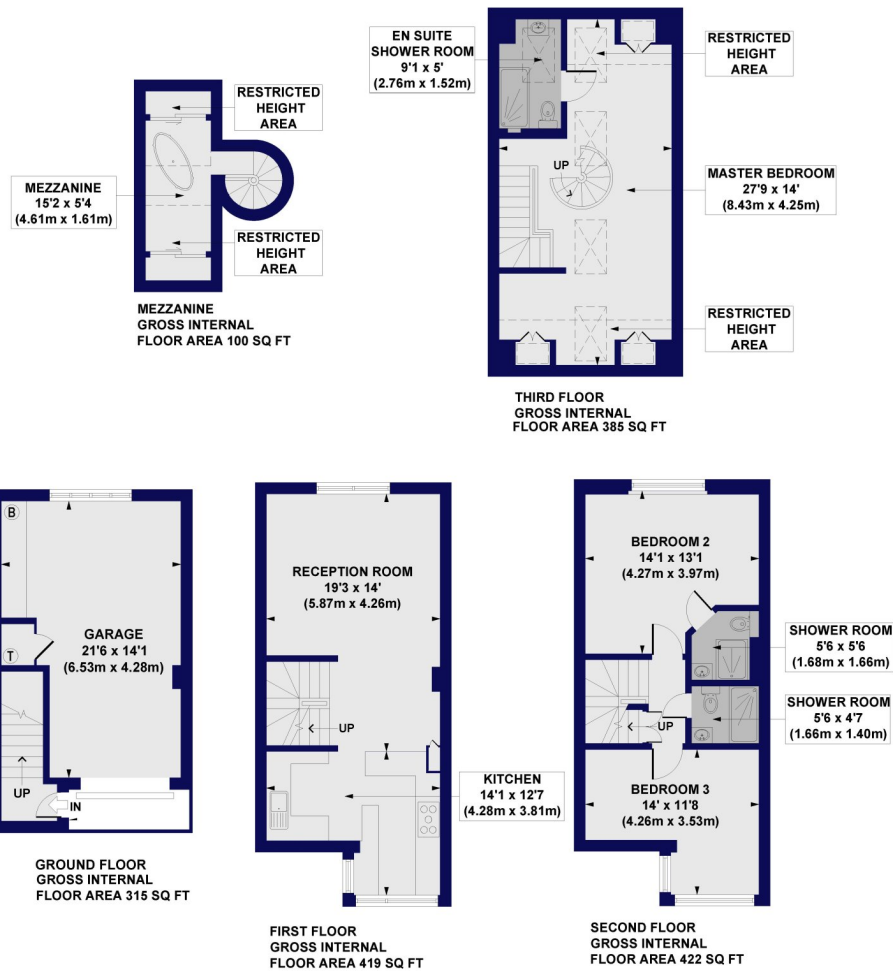


Winkworth

Victoria Yard, Fairclough Street, E1

Approx. Gross Internal Floor Area 1641 sq. ft / 152.51 sq. m (Including Garage & Restricted Height Area)

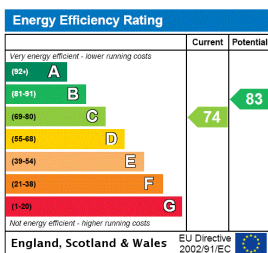
Approx. Gross Internal Floor Area 1191 sq. ft / 110.68 sq. m (Excluding Garage & Restricted Height Area)



All measurements of walls, doors, windows, fittings and appliances, including their size and location, are shown as standard sizes and do not constitute any warranty or representation by the seller, their agent or CP Creative. Any intending purchaser must satisfy himself by inspection or otherwise as to the correctness of the information contained in these plans. This plan is for illustrative purposes only and should be used as such by any prospective purchasers.

Winkworth

This floorplan is for illustration purposes only and is not to scale. The position and size of doors, windows, appliances and other features are approximate.



Shoreditch | 020 7749 7650 | shoreditch@winkworth.co.uk



winkworth.co.uk

See things differently

Winkworth wishes to inform prospective buyers and tenants that these particulars are a guide and act as information only. All our details are given in good faith and believed to be correct at the time of printing but they don't form part of an offer or contract. No Winkworth employee has authority to make or give any representation or warranty in relation to this property. All fixtures and fittings, whether fitted or not are deemed removable by the vendor unless stated otherwise and room sizes are measured between internal wall surfaces, including furnishings.