



FISHERS LANE, W4  
**£385,000 LEASEHOLD**

## TWO DOUBLE BEDROOM RETIREMENT FLAT

Chiswick | 020 8994 7096 | [chiswick@winkworth.co.uk](mailto:chiswick@winkworth.co.uk)

**Winkworth**

for every step...

[winkworth.co.uk](http://winkworth.co.uk)





### **DESCRIPTION:**

A two double bedroom retirement flat with a modern kitchen and shower/room bathroom just moments from Chiswick High Road. Resident's parking and no onward chain.

### **ACCOMMODATION**

- Purpose Built
- Retirement Flat
- Two Double Bedrooms
- Modern Kitchen
- Modern Bathroom
- Balcony
- No Onward Chain

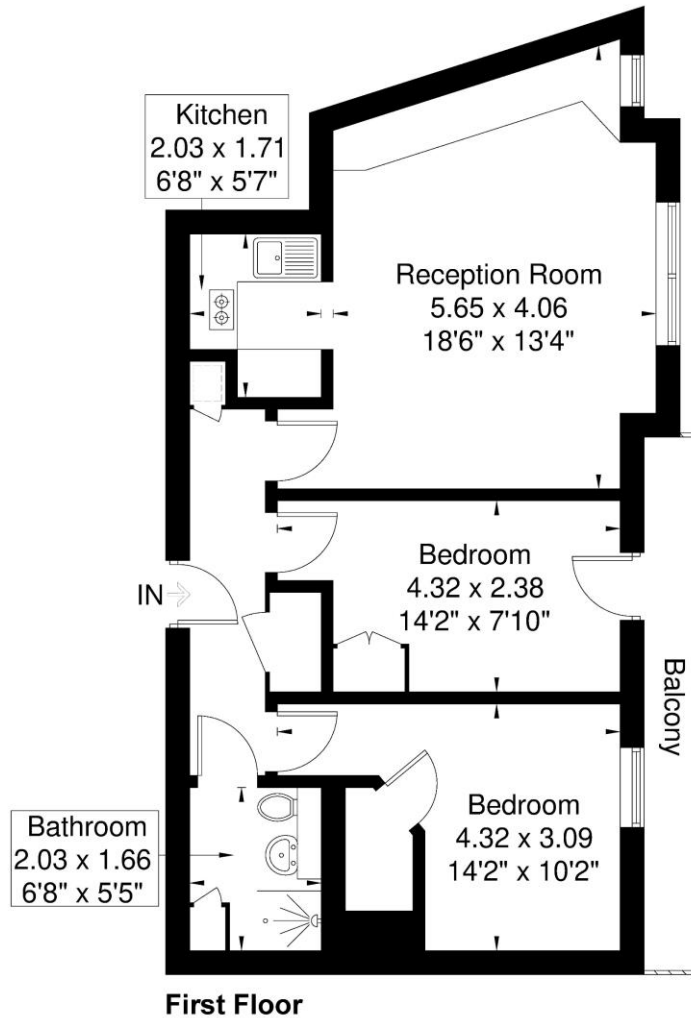






# Homecross House

Approximate Gross Internal Area = 56.9 sq m / 612 sq ft



**First Floor**

**Winkworth**

Although every attempt has been made to ensure accuracy, all measurements are approximate.  
The floorplan is for illustrative purposes only and not to scale.  
© www.perspective.co.uk

This floorplan is for illustration purposes only and is not to scale. The position and size of doors, windows, appliances and other features are approximate.

Energy Efficiency Rating		Current	Potential
Very energy efficient - lower running costs			
(92-100) <b>A</b>			
(81-91) <b>B</b>		86	87
(69-80) <b>C</b>			
(54-68) <b>D</b>			
(39-53) <b>E</b>			
(21-38) <b>F</b>			
(1-20) <b>G</b>			
Not energy efficient - higher running costs			
England, Scotland & Wales		EU Directive 2002/91/EC	

Chiswick | 020 8994 7096 | [chiswick@winkworth.co.uk](mailto:chiswick@winkworth.co.uk)

**Winkworth**

for every step...

[winkworth.co.uk](http://winkworth.co.uk)

Winkworth wishes to inform prospective buyers and tenants that these particulars are a guide and act as information only. All our details are given in good faith and believed to be correct at the time of printing but they don't form part of an offer or contract. No Winkworth employee has authority to make or give any representation or warranty in relation to this property. All fixtures and fittings, whether fitted or not are deemed removable by the vendor unless stated otherwise and room sizes are measured between internal wall surfaces, including furnishings.