



NORTH END ROAD, SW6 **£625,000 LEASEHOLD**

A spacious split level two double bedroom flat with a large roof terrace close to West Brompton and Fulham Broadway station.

Fulham & Parsons Green | 020 7731 3388
40 New King's Road, Fulham, London, SW6 4ST

Winkworth

for every step...

winkworth.co.uk



DESCRIPTION

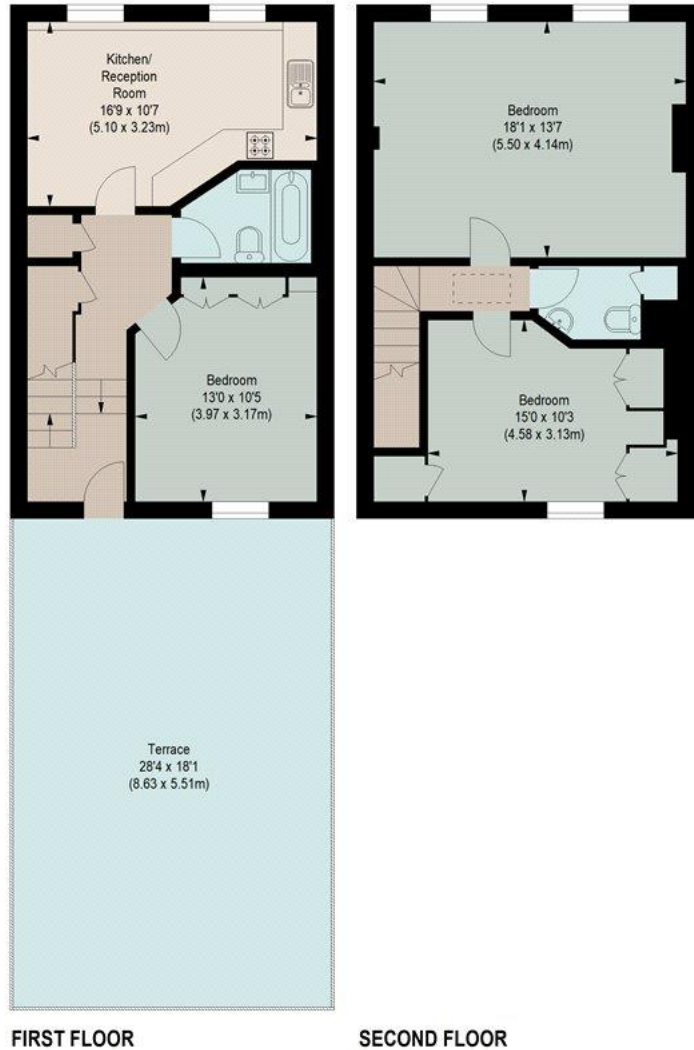
Arranged over the first and second floor the flat spans just shy of 960 Sq. Ft. The first floor comprises a kitchen/dining room with wooden flooring and a double bedroom which is served by a family bathroom. There is direct access off the hallway onto an incredibly large 28ft roof terrace. On the second floor you will find the large sitting room (currently being used as a third bedroom) which is flooded with natural light, a double bedroom and a shower room.

Located on the North End Road the property is within immediate proximity of local amenities, shops and restaurants and is a short walk away from both Fulham Broadway, West Brompton and West Kensington tube station. There are also several bus routes connecting the property to Central London.



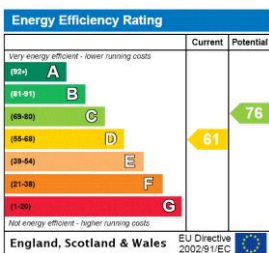
NORTH END ROAD, SW6

Approximate gross internal area
971 sq ft / 90.2 sq m



The floor plan is not to scale and measurements and areas shown are approximate and therefore should be used for illustrative purposes only. The plan has been prepared in accordance with the RICS code of Measuring Practice and whilst we have confidence in the information produced, it must not be relied on. If there is any aspect of particular importance, you should carry out or commission your own inspection of the property.

This floorplan is for illustration purposes only and is not to scale. The position and size of doors, windows, appliances and other features are approximate.



Tenure: Leasehold

Term: 124 year and 9 months

Service Charge: £875 per annum

Ground Rent: £0 Annually

Council Tax Band: E

Where no figures are shown, we have been unable to ascertain the information. All figures that are shown were correct at the time of printing.

Fulham & Parsons Green | 020 7731 3388 | fulham@winkworth.co.uk
40 New King's Road, Fulham, London, SW6 4ST

Winkworth

for every step...

winkworth.co.uk

Winkworth wishes to inform prospective buyers and tenants that these particulars are a guide and act as information only. All our details are given in good faith and believed to be correct at the time of printing but they don't form part of an offer or contract. No Winkworth employee has authority to make or give any representation or warranty in relation to this property. All fixtures and fittings, whether fitted or not are deemed removable by the vendor unless stated otherwise and room sizes are measured between internal wall surfaces, including furnishings.