



NEBULA HOUSE, MILKY WAY, QUEENSBURY, LONDON, NW9

£550,000 LEASEHOLD APPROX 991 YEARS REMAINING

- NO GROUND RENT PAYABLE
- SERVICE CHARGE £2,529 PER ANNUM

BEAUTIFUL AND SPACIOUS THREE BEDROOM APARTMENT IN QUEENSBURY

Kingsbury | 020 8204 0000 | kingsbury@winkworth.co.uk

Winkworth

for every step...

winkworth.co.uk



DESCRIPTION: Presenting this gorgeous three-bedroom apartment in Queensbury, ideal for a family home or a savvy investment. This property is neutrally decorated throughout, and filled with an abundance of natural light, enhancing its inviting atmosphere. It features two spacious double bedrooms, one with an en suite, and a cozy single bedroom/ office. The well-designed open-plan lounge seamlessly integrates with a modern kitchen, leading to a private and attractive balcony. Residents will appreciate the benefits of a long lease and an allocated secure parking space, as well as its close proximity to schools, amenities, and Queensbury Station (Jubilee Line). An internal viewing is a must to fully appreciate the charm and functionality of this delightful home.

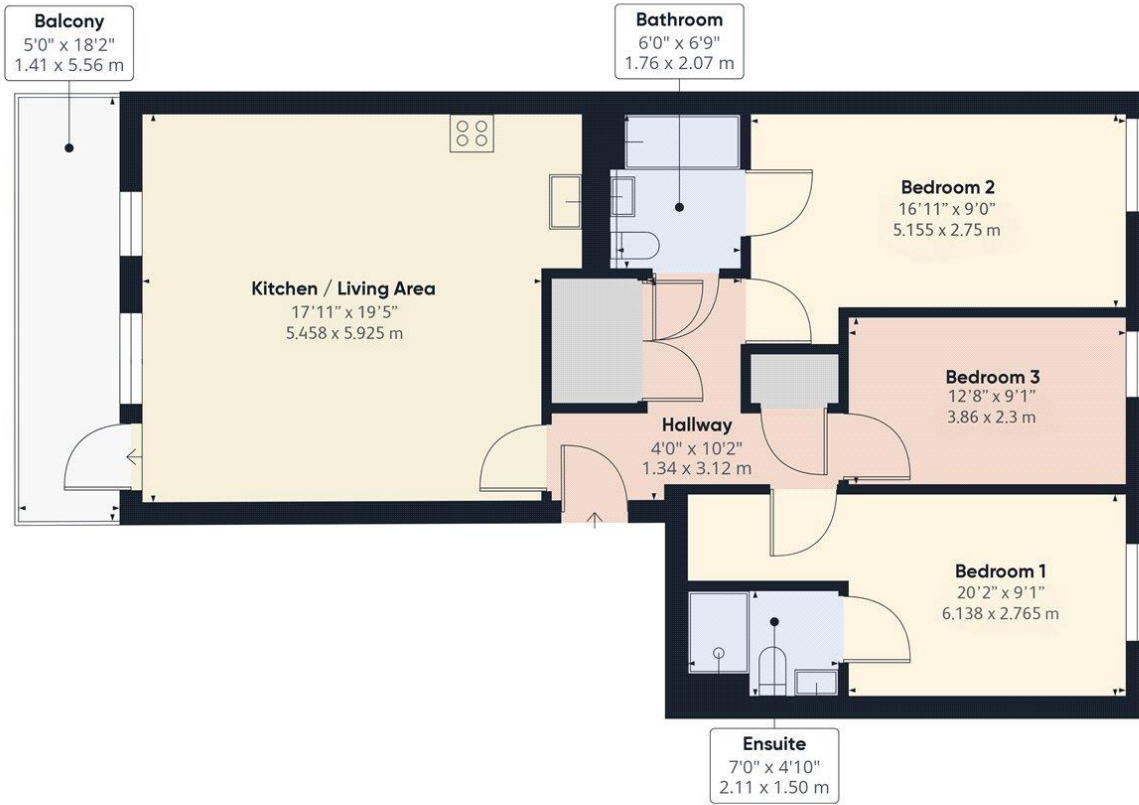


for every step...



Winkworth

for every step...



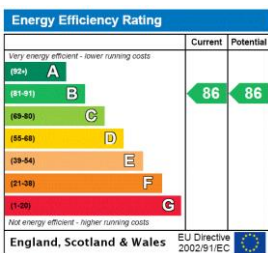
Approximate total area⁽¹⁾
94.2 ft²
87.5 m²

(1) Excluding balconies and terraces

While every attempt has been made to ensure accuracy, all measurements are approximate, not to scale. This floor plan is for illustrative purposes only.

GIRAFFE360

This floorplan is for illustration purposes only and is not to scale. The position and size of doors, windows, appliances and other features are approximate.



Tenure: Leasehold

Term: 991 year and 5 months

Service Charge: £2529 per annum

Ground Rent: £ 0 Annually (subject to increase)

Council Tax Band: E

Where no figures are shown, we have been unable to ascertain the information. All figures that are shown were correct at the time of printing.

Kingsbury | 020 8204 0000 | kingsbury@winkworth.co.uk

Winkworth

for every step...

winkworth.co.uk

Winkworth wishes to inform prospective buyers and tenants that these particulars are a guide and act as information only. All our details are given in good faith and believed to be correct at the time of printing but they don't form part of an offer or contract. No Winkworth employee has authority to make or give any representation or warranty in relation to this property. All fixtures and fittings, whether fitted or not are deemed removable by the vendor unless stated otherwise and room sizes are measured between internal wall surfaces, including furnishings.