



DULWICH MEWS, EAST DULWICH, SE22
£425,000 SHARE OF FREEHOLD

A SPACIOUS ONE DOUBLE BEDROOM FIRST FLOOR FLAT, SITUATED IN A HIGHLY SOUGHT AFTER LOCATION IN SE22.

Dulwich | 020 8299 2722 | dulwich@winkworth.co.uk

Tenure Share of Freehold – 999 years approx. | Council Tax Band B – London Borough of Southwark | Service Charge £150 pa | Ground Rent None

winkworth.co.uk

Winkworth

See things differently



DESCRIPTION:

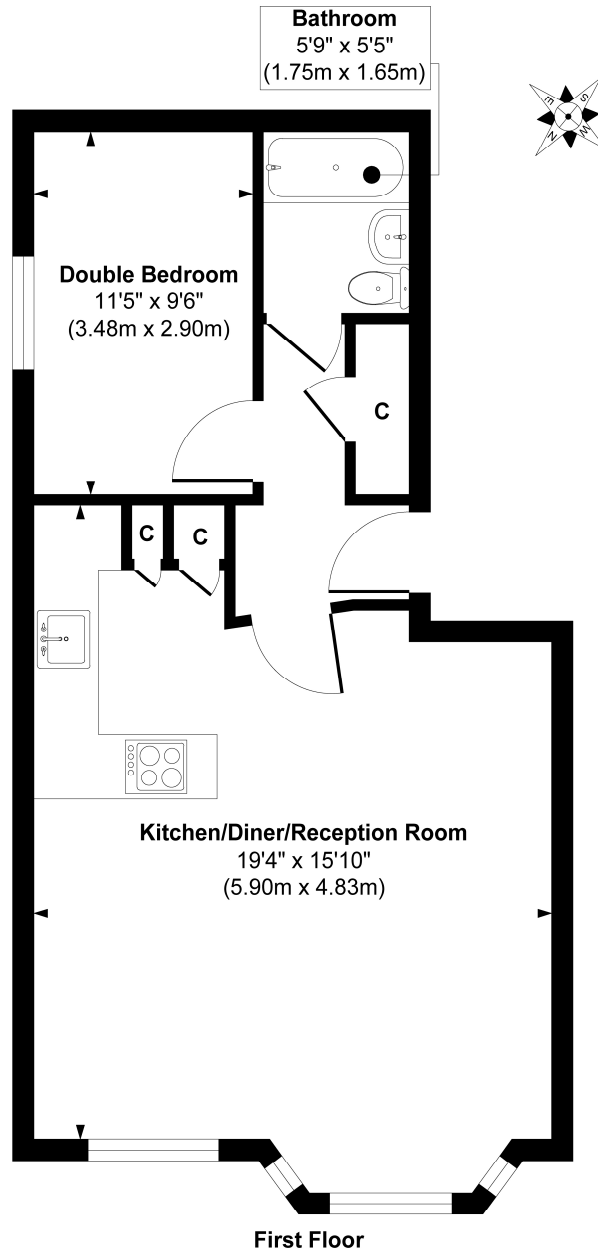
A spacious one double bedroom flat, situated in a highly sought after location in SE22. Overlooking Goose Green Park is this immaculate one double bedroom flat. The property boasts a very spacious, open-plan kitchen/ reception, set within a bay window and comprising wood flooring, breakfast bar and fully fitted kitchen with lots of storage and built in appliances. The double bedroom to rear provides lots of natural light and engineered hard wood flooring. The bathroom to rear has been refurbished and offers a large bath with heated towel rail, automatic lighting, and vanity unit. The property offers a private parking space and small communal garden. The property further boasts great access to everything East Dulwich and Peckham Rye have to offer. Lordship Lane and Bellenden Road are both within a short five minute walk, providing a fantastic array of shops, bars and restaurants. The parks are a stones throw with Goose Green and Peckham Rye Park on your doorstep. Transport links are well provided with the overground at Peckham Rye within a short walk or direct links to London Bridge from East Dulwich.

AT A GLANCE

- One Double Bedroom
- First Floor Flat
- Open Plan Kitchen-Reception
- Modern Kitchen
- Recently Refurbished Bathroom
- Plenty Of Storage
- Private Parking Space
- Share Of Freehold
- Excellent Location



Dulwich Mews

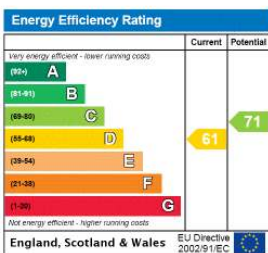


First Floor

Approx. Gross Internal Floor Area 480 sq. ft / 44.59 sq. m

Illustration for identification purposes only. measurements are approximate. not to scale.
Produced by Elements Property

This floorplan is for illustration purposes only and is not to scale. The position and size of doors, windows, appliances and other features are approximate.



Dulwich | 020 8299 2722 | dulwich@winkworth.co.uk

Winkworth

winkworth.co.uk

See things differently

Winkworth wishes to inform prospective buyers and tenants that these particulars are a guide and act as information only. All our details are given in good faith and believed to be correct at the time of printing but they don't form part of an offer or contract. No Winkworth employee has authority to make or give any representation or warranty in relation to this property. All fixtures and fittings, whether fitted or not are deemed removable by the vendor unless stated otherwise and room sizes are measured between internal wall surfaces, including furnishings.