

CHESTERTON ROAD, W10
£675,000 SHARE OF FREEHOLD

A FANTASTIC GARDEN FLAT CLOSE TO THE FABULOUS AND TRENDY GOLBOURNE ROAD

North Kensington | 020 7792 5000 | northkensington@winkworth.co.uk

Winkworth

for every step...

winkworth.co.uk



DESCRIPTION:

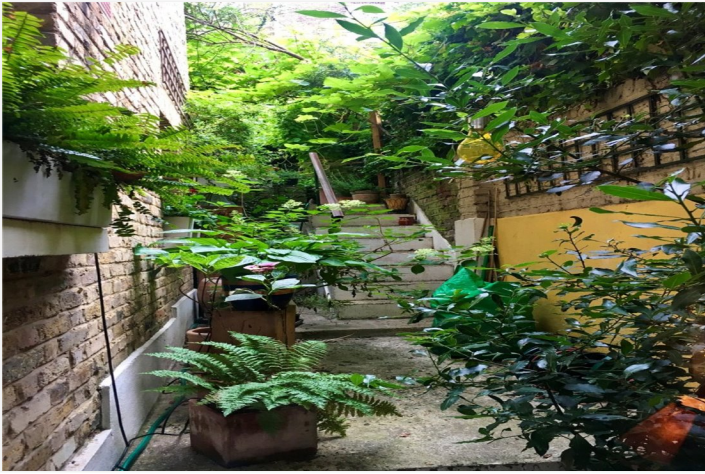
A lovely garden flat occupying the lower ground floor of this beautiful terraced house close to Ladbrooke Grove and Golborne road. A cosy, well-proportioned flat with stunning private garden of this quintessential Victorian house is this wonderful inviting home. The property offers a fabulous reception room with period detailing and semi open plan kitchen, large sash windows and ample storage. There are three good sized bedrooms (one with garden access) and a family bathroom. The garden is stunning and very private, a real oasis.

Set in one of west London's most enviable locations, Chesterton Road is sat on the doorstep of Golborne Road and the world-famous Portobello Road. The nearest Underground station is Ladbrooke Grove on the Circle and Hammersmith & City lines.

AT A GLANCE

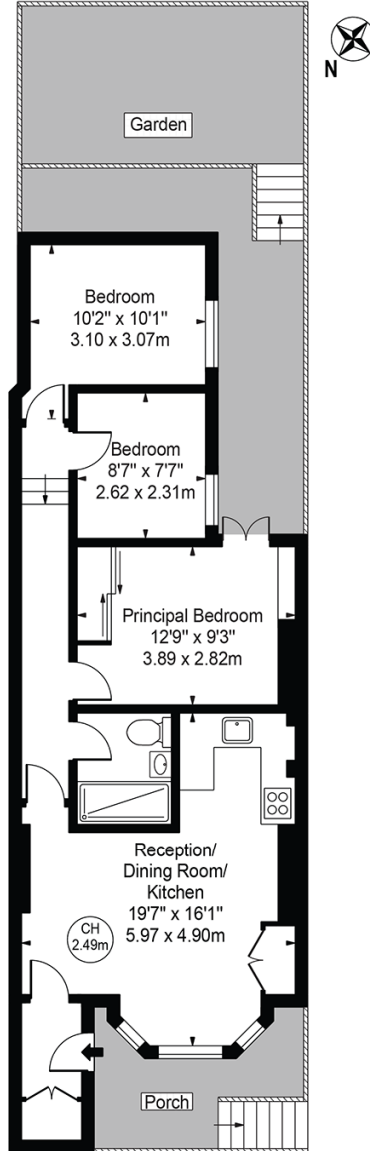
- Three Bedroom Flat
- Stunning Private Garden
- Great Storage
- Fantastic Location
- Semi-Open Kitchen
- Close to Portobello Road and Golborne Road
- Share of Freehold
- EPC Rating C





Chesterton Road

Approx. Gross Internal Area 652 Sq Ft - 60.57 Sq M



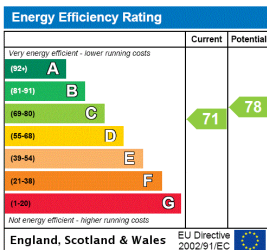
Lower Ground Floor

For Illustration Purposes Only - Not To Scale

This floor plan should be used as a general outline for guidance only and does not constitute in whole or in part an offer or contract. Any intending purchaser or lessee should satisfy themselves by inspection, searches, enquiries and full survey as to the correctness of each statement. Any areas, measurements or distances quoted are approximate and should not be used to value a property or be the basis of any sale or let.

Copyright Morriarti Photography & Design LTD

This floorplan is for illustration purposes only and is not to scale. The position and size of doors, windows, appliances and other features are approximate.



Tenure: Share of Freehold
Term: Expires - 25/09/2984
Service Charge: Adhoc
Ground Rent: Peppercorn
Council Tax Band: TBC

Where no figures are shown, we have been unable to ascertain the information. All figures that are shown were correct at the time of printing.

North Kensington | 020 7792 5000 | northkensington@winkworth.co.uk



for every step...

winkworth.co.uk

Winkworth wishes to inform prospective buyers and tenants that these particulars are a guide and act as information only. All our details are given in good faith and believed to be correct at the time of printing but they don't form part of an offer or contract. No Winkworth employee has authority to make or give any representation or warranty in relation to this property. All fixtures and fittings, whether fitted or not are deemed removable by the vendor unless stated otherwise and room sizes are measured between internal wall surfaces, including furnishings.