



WHITE LION STREET, LONDON, N1  
£280,000 LEASEHOLD

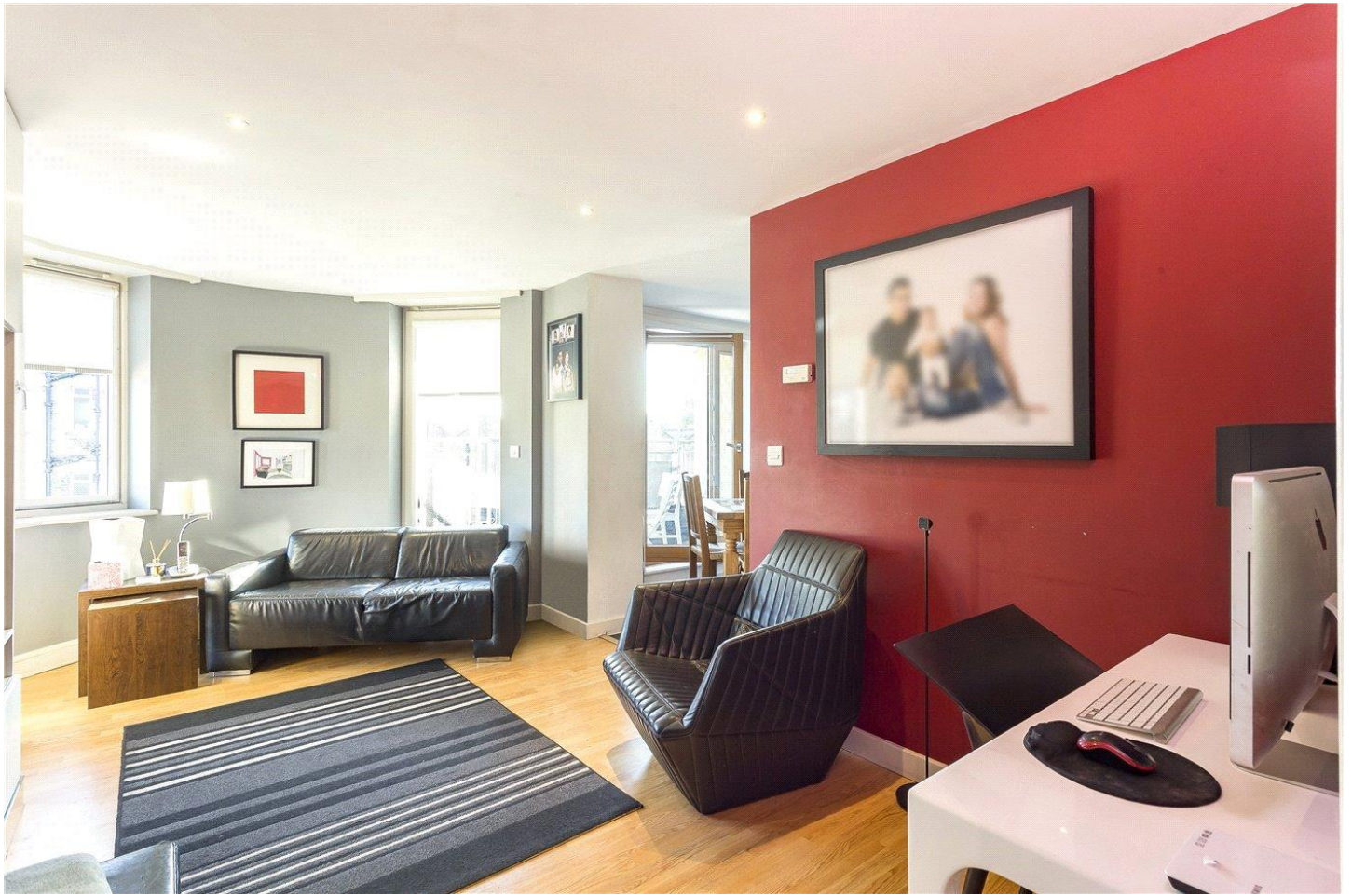
## A FANTASTIC TWO BED APARTMENT MOMENTS FROM ANGEL STATION

Islington | 0207 354 2480 | [islington@winkworth.co.uk](mailto:islington@winkworth.co.uk)

**Winkworth**

[winkworth.co.uk](http://winkworth.co.uk)

See things differently

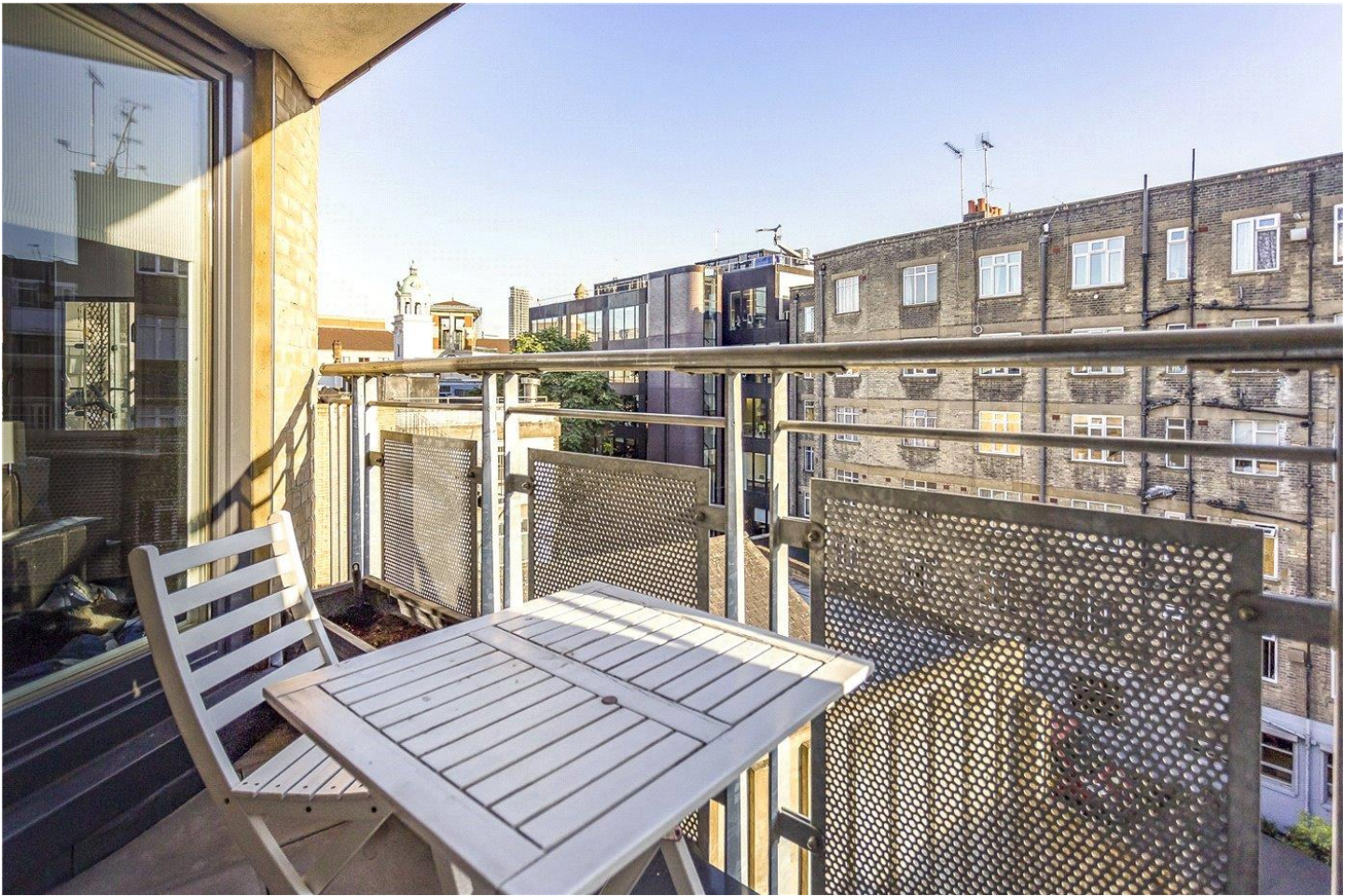


## DESCRIPTION:

40% Shared Ownership. A wonderful two bedroom property positioned across the second floor of this modern development in the heart of Angel. Spanning 730sqft, the flat is flooded with natural light and boasts well-proportioned rooms throughout. Accommodation includes two double bedrooms, a contemporary style family bathroom, reception room and two private south-facing balconies.

Located on White Lion Street, this development is a short walk from Angel underground station. The choice of local amenities is abundant with Upper Street, Clerkenwell and Shoreditch all within easy reach. Bars, restaurants, and shopping facilities including supermarkets and both independent and high street retailers are all moments away. Transport links are incredibly well serviced by Angel underground station, numerous bus routes and St Pancras International.

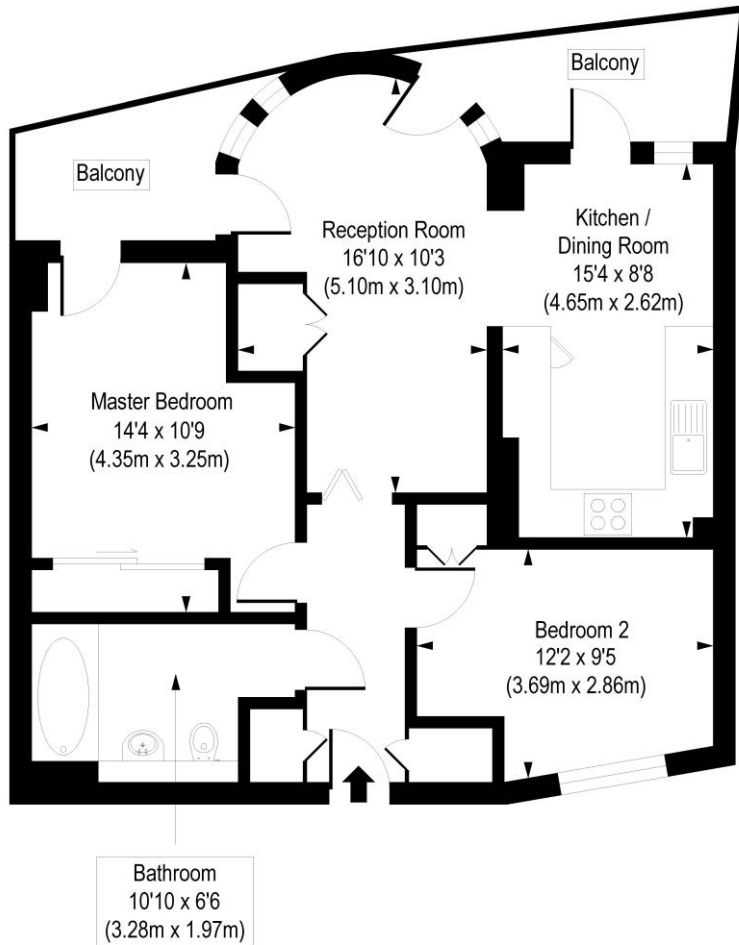
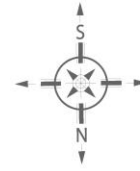
**Winkworth**



**Winkworth**

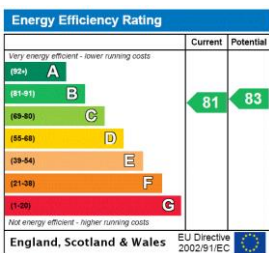
# White Lion Street, N1

Approx. Gross Internal Floor Area 730 sq. ft / 67.9 sq. m



COMPLIANT WITH RICS CODE OF MEASURING PRACTICE. Floorplan is for illustrative purposes only and is not to scale. Every attempt has been made to ensure the accuracy of the floorplan shown, however all measurements, fixtures, fittings and data shown are an approximate interpretation for illustrative purposes only. Liability for errors, omissions or mis-statement through negligence or otherwise is hereby excluded.

This floorplan is for illustration purposes only and is not to scale. The position and size of doors, windows, appliances and other features are approximate.



Islington | 0207 354 2480 | islington@winkworth.co.uk



winkworth.co.uk

See things differently

Winkworth wishes to inform prospective buyers and tenants that these particulars are a guide and act as information only. All our details are given in good faith and believed to be correct at the time of printing but they don't form part of an offer or contract. No Winkworth employee has authority to make or give any representation or warranty in relation to this property. All fixtures and fittings, whether fitted or not are deemed removable by the vendor unless stated otherwise and room sizes are measured between internal wall surfaces, including fumishings.