



**TUDOR LODGE, TUDOR CLOSE, KINGSBURY, NW9**  
**£770,000 FREEHOLD**

## THREE / FOUR BEDROOM DETACHED HOUSE

Kingsbury | 020 8204 0000 | [kingsbury@winkworth.co.uk](mailto:kingsbury@winkworth.co.uk)

**Winkworth**





Winkworth  
Kingsbury

A rare opportunity to acquire this truly outstanding detached residence in a prime location in Kingsbury. The property is presented in beautiful decorative condition. The ground floor offers two reception rooms, a large conservatory with double doors leading out to the rear garden, good sized modern fitted kitchen, downstairs cloakroom and storage/utility space which also has a door leading out to the rear garden. The first floor accommodates three bedrooms and a luxurious family bathroom. To the exterior, there is off street parking for up to three cars. Tudor Close is located within easy access of Wembley Park underground station and within a short distance of a variety of shops and amenities. The beautiful open spaces of the Welsh Harp



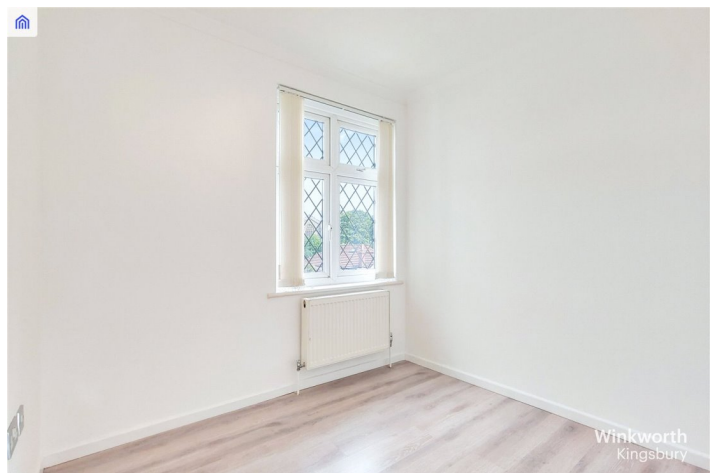
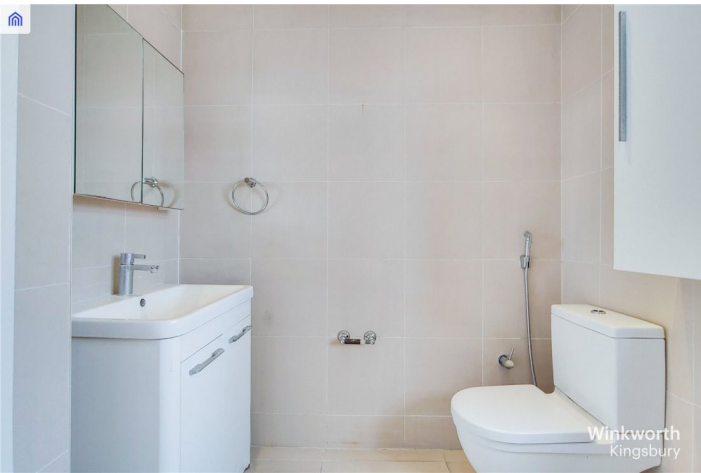
Winkworth  
Kingsbury



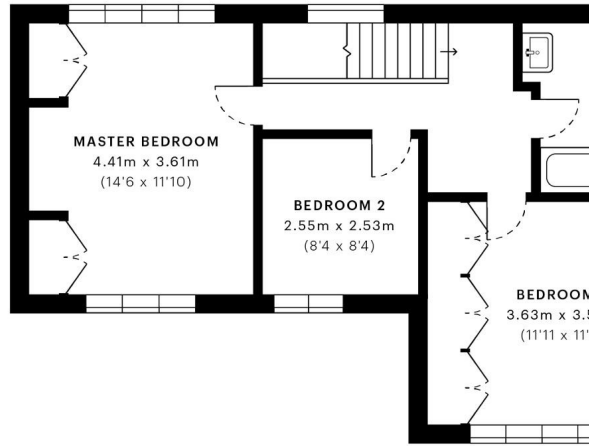
Winkworth  
Kingsbury

Winkworth

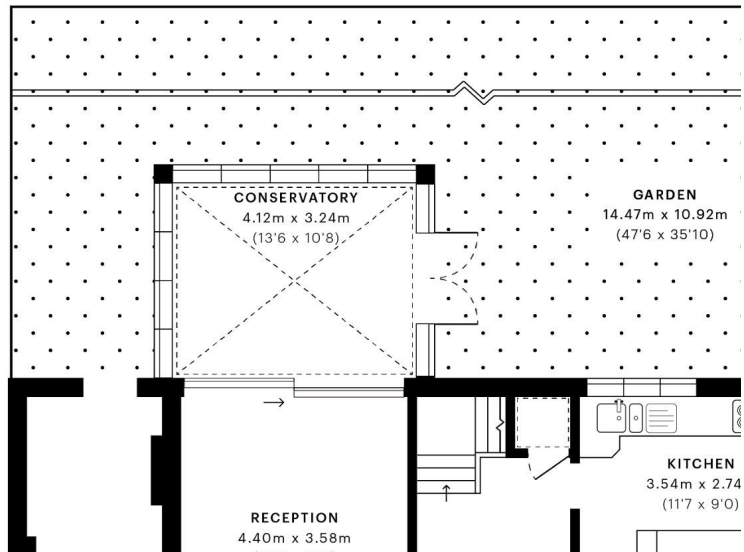




**Winkworth**



— First Floor



This floorplan is for illustration purposes only and is not to scale. The position and size of doors, windows, appliances and other features are approximate.

Energy Efficiency Rating		Current	Potential
Very energy efficient - lower running costs			
(92-100)	A		
(81-91)	B		
(69-80)	C		
(55-68)	D		
(39-54)	E	55	
(21-38)	F		
(1-20)	G		
Not energy efficient - higher running costs			
England, Scotland & Wales		EU Directive 2002/91/EC	

