



EGERTON GARDENS, LONDON, NW10  
**£2,200,000 FREEHOLD**

**A BEAUTIFUL FIVE BEDROOM SEMI-DETACHED FAMILY HOME  
ON THIS QUIET CUL-DE-SAC CLOSE TO QUEENS PARK IN  
KENSAL RISE**

**Kensal & Queens Park** | 0208 960 4947 | [kensalrise@winkworth.co.uk](mailto:kensalrise@winkworth.co.uk)

**Winkworth**

*winkworth.co.uk*

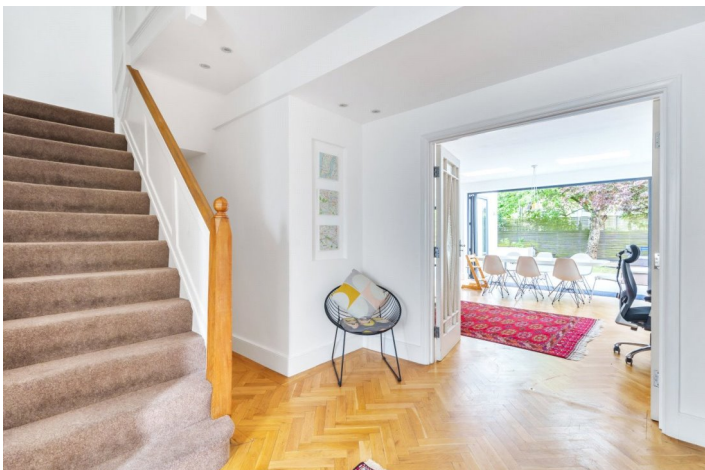
See things differently





## LOCATION:

Most don't realise these lovely little cul-de-sac streets just off Chamberlayne Road have so much to offer. Transport links are great with Kensal Rise or Kensal Green stations being only 1/4 mile from the front door. The location also means that all the amenities of College Road or Chamberlayne Road are easily accessible and so too is Queens Park itself for those lazy summer days. Another benefit is that just to the west of Egerton Gardens there are four good quality tennis courts in Chelmsford Square which are open to the public.



**Winkworth**

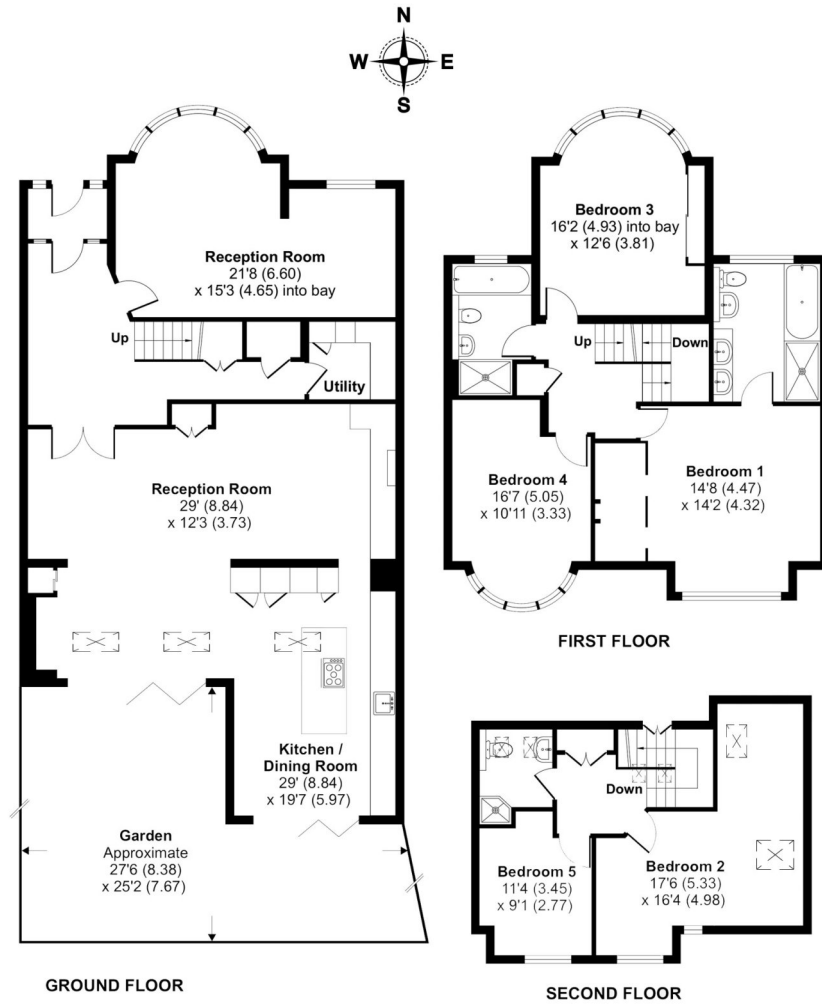




## DESCRIPTION:

A superb example of a fully extended and sympathetically designed family home in the heart of Kensal Rise. Situated in a quiet cul-de-sac location, tucked away from the hustle & bustle of the vibrant Chamberlayne Road.

**Winkworth**



**Total Area: 242.2 m<sup>2</sup> ... 2608 ft<sup>2</sup> (excluding Garden)**

All measurements are approximate and for display purposes only

This floorplan is for illustration purposes only and is not to scale. The position and size of doors, windows, appliances and other features are approximate.

Kensal & Queens Park | 0208 960 4947 | kensalrise@winkworth.co.uk



winkworth.co.uk

See things differently

winkworth wishes to inform prospective buyers and tenants that these particulars are a guide and act as information only. All our details are given in good faith and believed to be correct at the time of printing but they don't form part of an offer or contract. No winkworth employee has authority to make or give any representation or warranty in relation to this property. All fixtures and fittings, whether fitted or not are deemed removable by the vendor unless stated otherwise and room sizes are measured between internal wall surfaces, including furnishings.