



Blythe House, Kennington Park Road, London, SE11

OIEO £300,000 Leasehold

A two-bedroom, first floor flat in need of a full renovation. Situated within a purpose-built block and ideally located in Kennington. This is a fantastic opportunity for someone to put their stamp on this property and create a wonderful flat. EPC Rating D.

Winkworth

LOCATION

You will find Blythe House nestled between Kennington Park Road and Bowling Green Street. Both Oval and Kennington are a stone's throw away providing a wide array of cafes, delis, shops and more. Blythe House overlooks the green spaces of Kennington Park.

DESCRIPTION

Entering the flat on the first floor. To your right is the kitchen space. You will find a good amount of workspace and cupboards. You will also find space for utilities. A sensible space just needing a cosmetic overhaul.

The hallway contains the bathroom, housing a bath and sink. There is also a separate lavatory adjacent.

Both bedrooms are located on the left hand side of the flat. Bot equally generous and suitable for double beds. There is also ample room for freestanding storage solutions.

Ther reception at the front right is a well sized room suitable for a sofa and dining table with the added bonus of having that view onto Kennington Park.

Parking permit available through Lambeth Council or through Hyde Housing on a first come first serve basis.

UTILITIES

Electricity – mains connected

Gas – Mains connected

Water – mains connected with meter

Heating – Gas central heating

Sewerage – mains connected

Broadband – Standard broadband

LOCAL AUTHORITY

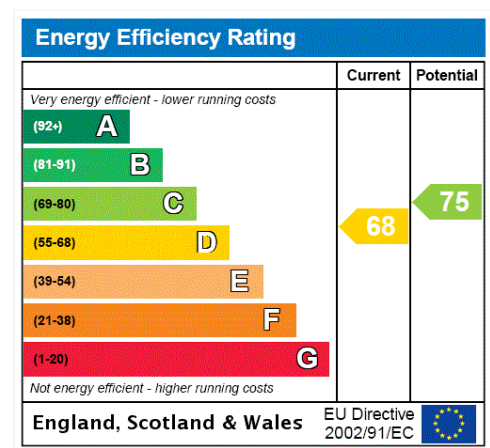
Lambeth Council

TENURE

Leasehold – 125 years

DIRECTIONS

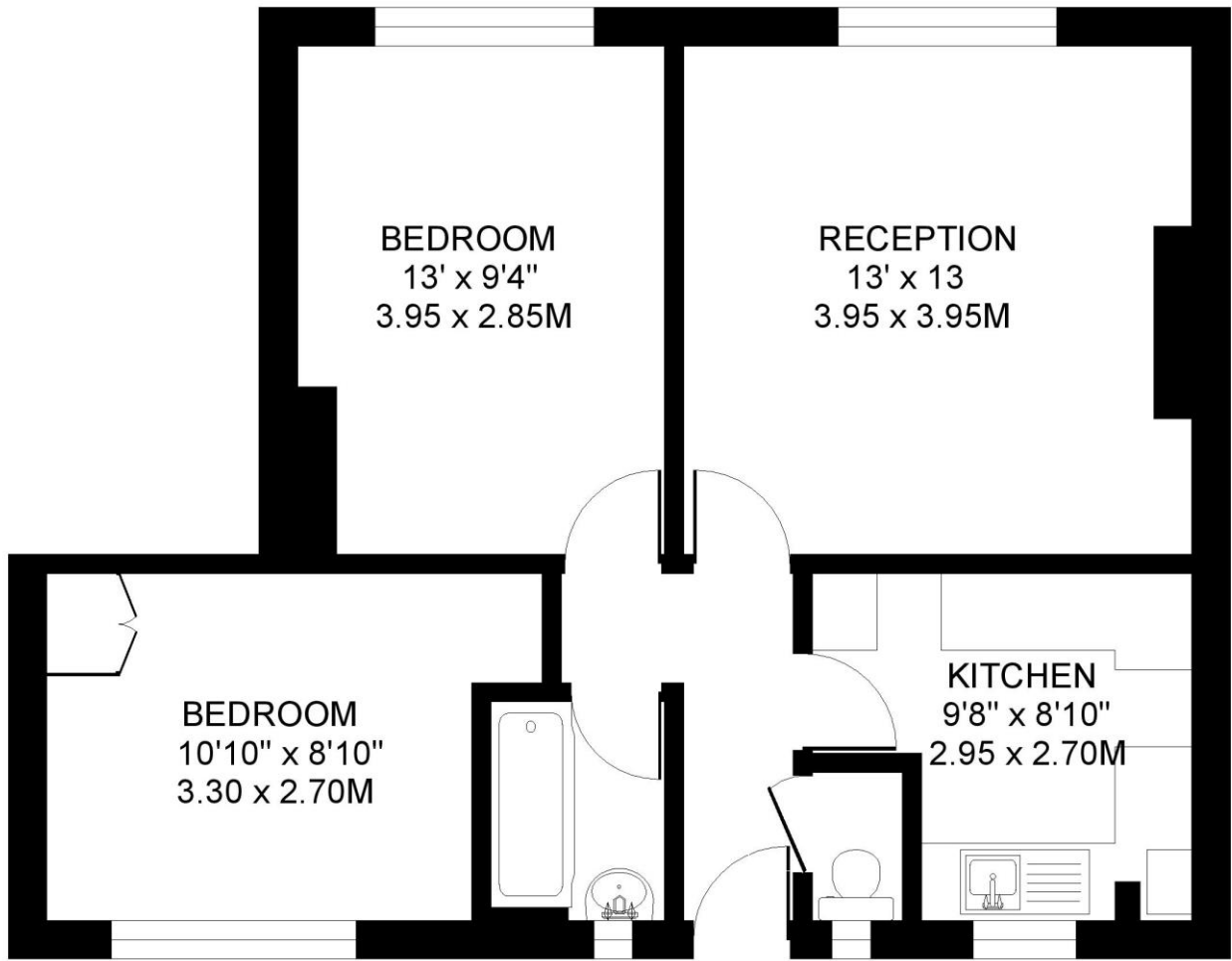
Oval Underground Station (Northern Line) is approximately 0.2 miles away. Kennington Underground Station (Northern Line) is a 10 minute walk away. National Rail services can be found at Vauxhall Station, which is approximately 0.7 miles away. Kennington Park Road is also well served with frequent bus services.





BLYTHE HOUSE. SE11
2 BEDROOM FLAT

Approximate gross floor area
563 SQ.FT / 52.3 SQ.M.



FIRST FLOOR

This floorplan is for illustration purposes only and is not to scale. The position and size of doors, windows, appliances and other features are approximate.

Copyright: These plans should not be reproduced by any other person, without permission.
Floorplan produced for Winkworth by Floorplanners 07801 228850

Kennington | 020 7587 0600 | kennington@winkworth.co.uk