



VICTOR ROAD, NW10
£4,000 PER MONTH

NEWLY RENOVATED THREE BEDROOM FAMILY HOME

Kensal Rise & Queens Park | 0208 960 4947 |
kensalrise@winkworth.co.uk

Winkworth

for every step...

winkworth.co.uk



DESCRIPTION:

Winkworth are delighted to offer this newly renovated three bedroom family home measuring over 1,560 sq ft to the lettings market.

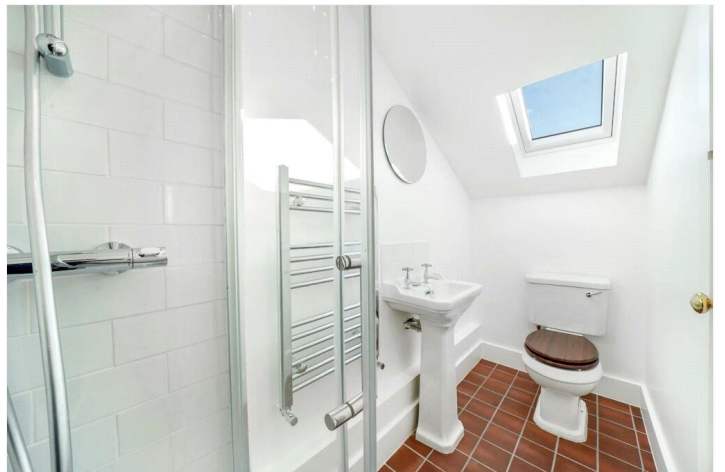
This delightful home has been tastefully renovated to high standard. The ground floor comprises a double aspect reception room with hardwood flooring flowing seamlessly through to the extended kitchen diner to the rear. Benefitting from an abundance of natural light flooding through the skylights and bi-folding doors which open onto mixture of patio and newly laid lawn garden and onto a small allotment behind the picket fence.

The kitchen offers ample storage and is equipped with all modern appliances to include a range-master cooker.

The first floor offers two good size double bedrooms, a fully tiled family bathroom as well as a separate utility room and the loft has been converted to offer the primary bedroom with power shower en-suite.

Additional features include underfloor heating throughout the ground floor, beautiful carpet runners, and reclaimed feature fireplaces and will appreciate that the nearest train station is only a stones through away.

Offered unfurnished and available now for professionals and families.





Total Area: 142.0 m² ... 1529 ft² (excluding garden)
All measurements are approximate and for display purposes only

This floorplan is for illustration purposes only and is not to scale. The position and size of doors, windows, appliances and other features are approximate.

Deposit: 5 weeks rent

Holding Deposit: 1 weeks rent

Council Tax Band: D

where no figures are shown, we have been unable to ascertain the information. All figures that are shown were correct at the time of printing.

Kensal Rise & Queens Park | 0208 960 4947 | kensalrise@winkworth.co.uk

Winkworth

for every step...

winkworth.co.uk

winkworth wishes to inform prospective buyers and tenants that these particulars are a guide and act as information only. All our details are given in good faith and believed to be correct at the time of printing but they don't form part of an offer or contract. No Winkworth employee has authority to make or give any representation or warranty in relation to this property. All fixtures and fittings, whether fitted or not are deemed removable by the vendor unless stated otherwise and room sizes are measured between internal wall surfaces, including furnishings.