



LYSIA STREET, SW6

£699,950 SHARE OF FREEHOLD

This superb two bedroom, ground floor garden flat, located on one of the quiet alphabet streets in Fulham, just a few minutes' walk from the river, being sold with a share of the freehold.

Fulham & Parsons Green | 020 7731 3388 | fulham@winkworth.co.uk

Winkworth

for every step...

winkworth.co.uk



DESCRIPTION:

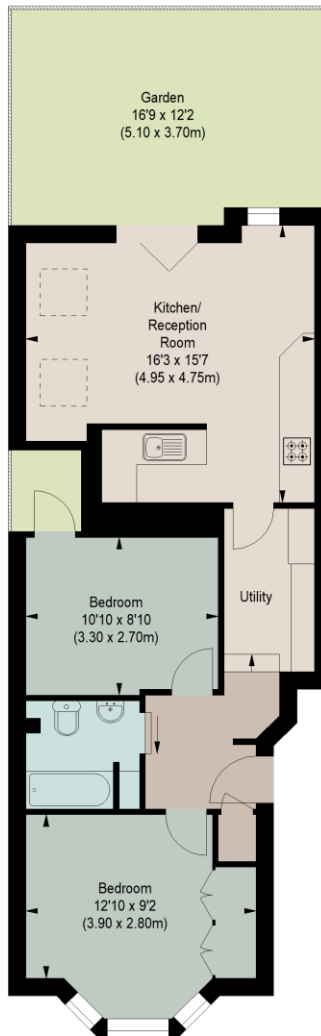
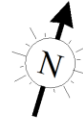
The master bedroom is light and bright, with elegant built-in wardrobes. There is a second double bedroom which is being used as a nursery and office currently. Both bedrooms are served by a modern large family bathroom. There is a utility area in the hallway which is a clever use of the space. This leads to you a super eat-in kitchen and reception room with bi-folding doors that open out onto the impressive garden. The flat has high ceilings and is in immaculate condition throughout.

Lysia Street is located close to the green expanse of Bishops Park and is equidistant to both Hammersmith and Putney Bridge underground stations. Nearby local amenities can be found a short walk away on Fulham Palace Road.





LYSIA STREET, SW6
Approximate gross internal area
635 sq ft / 58.99 sq m



GROUND FLOOR

The floor plan is not to scale and measurements and areas shown are approximate and therefore should be used for illustrative purposes only. The plan has been prepared in accordance with the RICS code of Measuring Practice and whilst we have confidence in the information produced, it must not be relied on. If there is any aspect of particular importance, you should carry out or commission your own inspection of the property.

This floorplan is for illustration purposes only and is not to scale. The position and size of doors, windows, appliances and other features are approximate.

Fulham & Parsons Green | 020 7731 3388 | fulham@winkworth.co.uk

Winkworth

for every step...

winkworth.co.uk

Winkworth wishes to inform prospective buyers and tenants that these particulars are a guide and act as information only. All our details are given in good faith and believed to be correct at the time of printing but they don't form part of an offer or contract. No Winkworth employee has authority to make or give any representation or warranty in relation to this property. All fixtures and fittings, whether fitted or not are deemed removable by the vendor unless stated otherwise and room sizes are measured between internal wall surfaces, including furnishings.