



Churchill Gardens, UK, SW1V

£2,400 PER MONTH

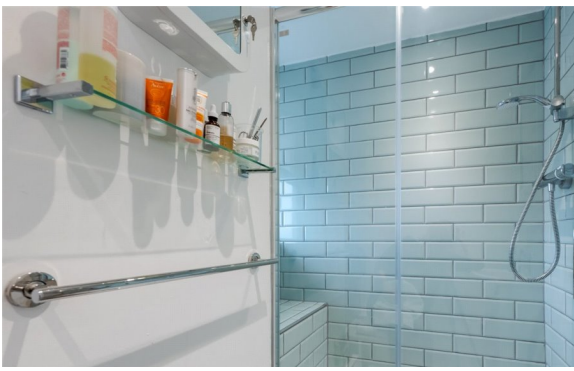
FURNISHED


AT A GLANCE

- Two Double Bedrooms
- Spacious Reception
- Large Balcony
- High Specification
- Close to Transport Links
- Council Tax Band: C

Winkworth

for every step...



Energy Efficiency Rating		
	Current	Potential
Very energy efficient - lower running costs		
(92+) A		
(81-91) B		
(69-80) C		
(55-68) D		68
(39-54) E	50	
(21-38) F		
(1-20) G		
Not energy efficient - higher running costs		
England, Scotland & Wales		EU Directive 2002/91/EC 

CHURCHILL GARDENS, UK, SW1V

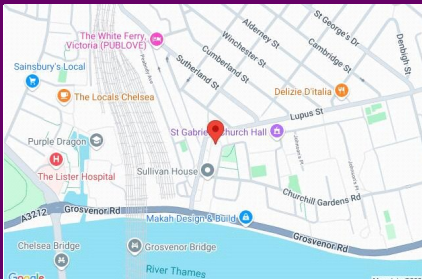
£2,400 PER MONTH

FURNISHED

A beautiful presented and incredibly bright, two double bedroom top floor apartment located on the edge of Churchill Gardens. The property boasts magnificent views over the iconic Battersea Power Station and the London Skyline.

The accommodation has been wonderfully maintained and updated by the current owner and briefly comprises a large reception room with space to dine and entertain and a bespoke fitted kitchen with modern integrated appliances. There is a generous master bedroom with built-in fitted wardrobes, a second double bedroom and a stylish family bathroom. To the rear there is a generous private balcony which benefits from those impressive landmark views.

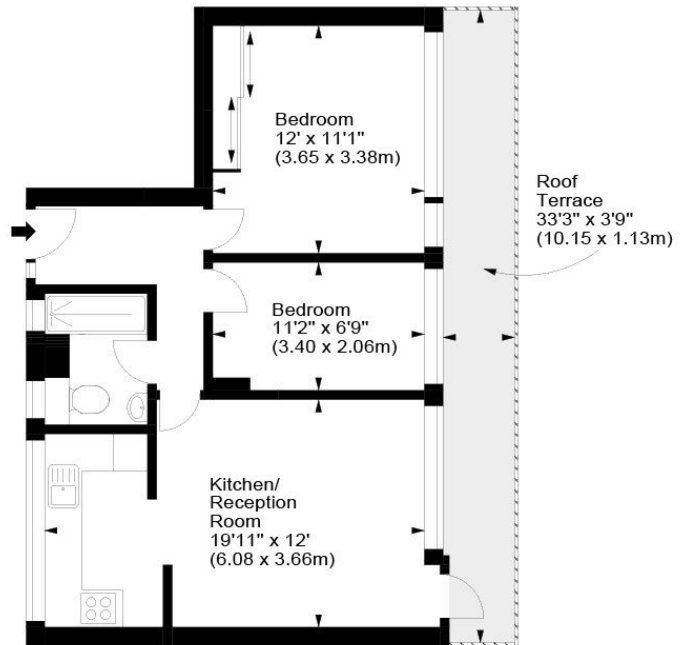
Gilbert House is one of the preferred buildings at Churchill Gardens being positioned on the Grosvenor Road edge of the estate and offering views of both the River Thames and the iconic Battersea Power Station.



winkworth wishes to inform prospective buyers and tenants that these particulars are a guide and act as information only. All our details are given in good faith and believed to be correct at the time of printing but they don't form part of an offer or contract. No winkworth employee has authority to make or give any representation or warranty in relation to this property. All fixtures and fittings, whether fitted or not are deemed removable by the vendor unless stated otherwise and room sizes are measured between internal wall surfaces, including fire doors.

Gilbert House, SW1

Approx. Gross Internal Area
554 Sq Ft - 51.47 Sq M



Ninth Floor

For illustration purposes only. Not to scale.
All measurements are taken and shown at floor level.
www.r3photography.co.uk © Photography / Floor Plans / Lease Plans / EPCs



Pimlico & Westminster | 020 7828 1786 |
pimlico@winkworth.co.uk

winkworth.co.uk/pimlico

Winkworth

for every step...