



NORWOOD ROAD, LONDON, SE24  
**£1,350 PER MONTH UNFURNISHED**

## A ONE DOUBLE BEDROOM VICTORIAN CONVERSION IN HERNE HILL

### **SUMMARY:**

This one double bedroom Victorian conversion above commercial (Veterinary Surgery) is ideally located for the amenities of Herne Hill and Tulse Hill and just a stone's throw from the lovely Brockwell Park.

Herne Hill | 0207 501 8950 | hernehill@winkworth.co.uk

**Winkworth**

for every step...

*winkworth.co.uk*



## DESCRIPTION:

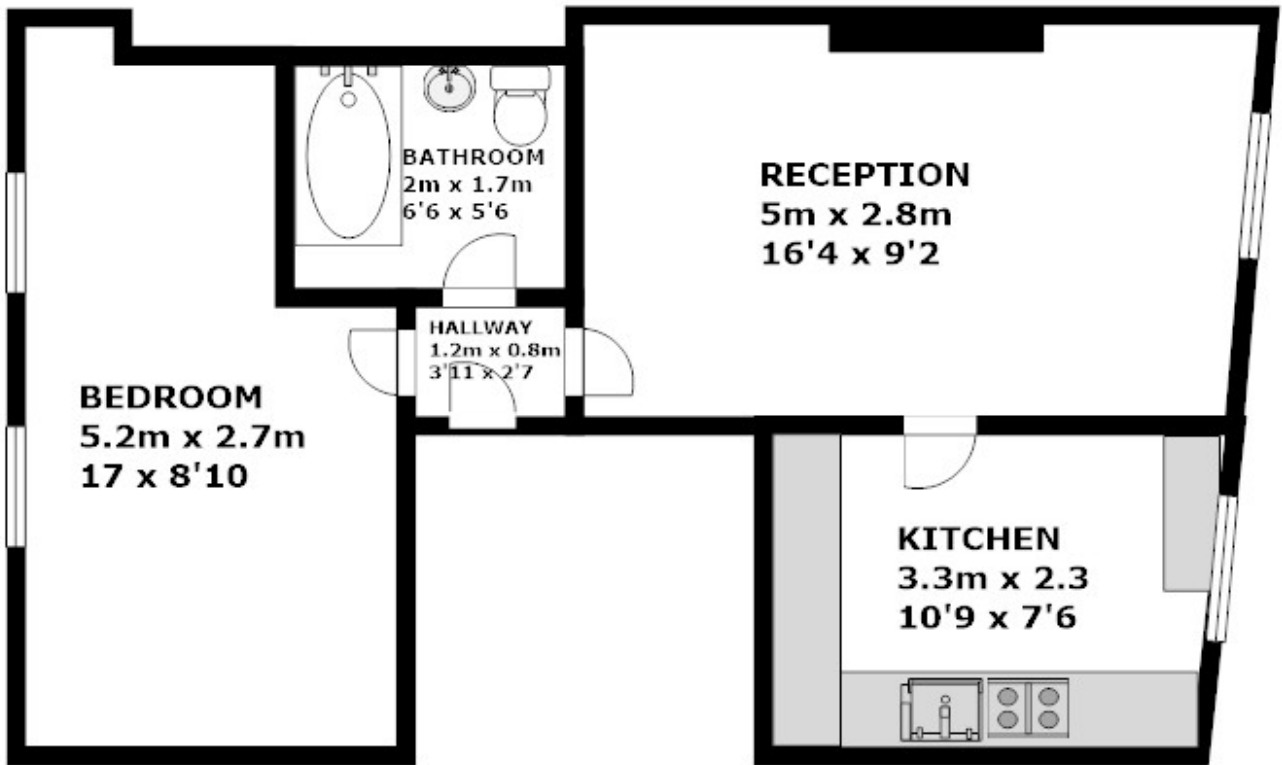
The property has a large reception diner to the front and a kitchen breakfast room with an electric hob and oven, a fridge freezer, a dishwasher and a washing machine. There is a large double bedroom to the rear of the property and a modern bathroom with a shower over the bath and a WC. The property is offered unfurnished and available now.





## AT A GLANCE

- Victorian conversion
- First floor flat
- One double bedroom
- Reception diner
- Separate modern kitchen
- Bathroom
- Unfurnished
- Available now
- Lambeth council tax band: B

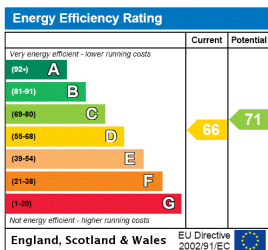


**1ST FLOOR**

**TOTAL APPROX. FLOOR AREA 430.44 SQ.FT (39.99 SQ.M)**

**Whilst every attempt has been made to ensure the accuracy of the floor plan contained here, measurements of doors, windows, rooms and any other items are approximates and no responsibility is taken for any error, omission, or miss-statement. This plan is for illustrative purposes only and should be used as such by any prospective purchaser. The service, systems and appliances shown have not been tested and no guarantee as to their operability or efficiency can be given**

This floorplan is for illustration purposes only and is not to scale. The position and size of doors, windows, appliances and other features are approximate.



Herne Hill | 0207 501 8950 | hernehill@winkworth.co.uk



for every step...

winkworth.co.uk

Winkworth wishes to inform prospective buyers and tenants that these particulars are a guide and act as information only. All our details are given in good faith and believed to be correct at the time of printing but they don't form part of an offer or contract. No Winkworth employee has authority to make or give any representation or warranty in relation to this property. All fixtures and fittings, whether fitted or not are deemed removable by the vendor unless stated otherwise and room sizes are measured between internal wall surfaces, including furnishings.