



ROE END, KINGSBURY, LONDON, NW9
£435,000 LEASEHOLD APPROX 136 YEARS REMAINING
STUNNING TWO BEDROOM
GROUND FLOOR MAISONETTE
ROE GREEN VILLAGE

Kingsbury | 020 8204 0000 | kingsbury@winkworth.co.uk



for every step...

winkworth.co.uk



This pristine turnkey home is beautifully positioned within the highly sought after Roe Green Village, Kingsbury. Featuring crisp and clean neutral decor throughout, on offer is a homely reception room, sleek modern kitchen leading through to a gorgeous 100ft rear garden, two well-proportioned bedrooms, and an attractive family shower room featuring a dual fuel towel radiator. Further benefits include underfloor heating in the bathroom, kitchen and hallway, home automation in the living room, security camera system, garden lighting, and power provisions for an outbuilding at the back of the house. Planning permission for a single storey rear extension and installation of side window has also been granted on the property (Ref: PP-10525297). Roe End sits ideally between worlds, set back from the hustle and bustle of hectic city living, yet still being within walkable proximity from local shops, amenities, places of worship, bus and London Underground links including Kingsbury Station (Jubilee Line) and rated schools such as Kingsbury High and Roe Green Primary.



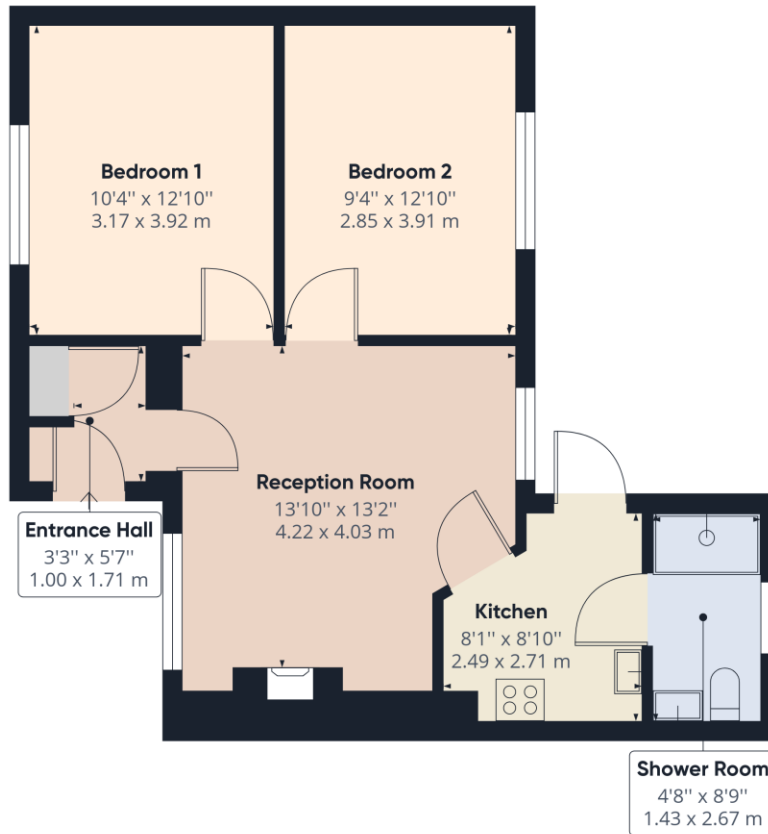
Winkworth

for every step...



Winkworth

for every step...



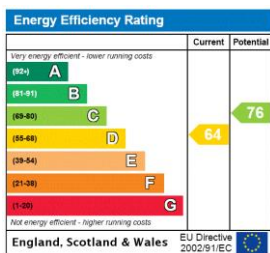
Approximate total area⁽¹⁾
571.44 ft²
53.09 m²

(1) Excluding balconies and terraces

While every attempt has been made to ensure accuracy, all measurements are approximate, not to scale. This floor plan is for illustrative purposes only.

GIRAFFE360

This floorplan is for illustration purposes only and is not to scale. The position and size of doors, windows, appliances and other features are approximate.



Tenure: Leasehold

Term: 136 year and 7 months

Council Tax Band: C -Brent

Where no figures are shown, we have been unable to ascertain the information. All figures that are shown were correct at the time of printing.

Kingsbury | 020 8204 0000 | kingsbury@winkworth.co.uk

Winkworth

for every step...

winkworth.co.uk

Winkworth wishes to inform prospective buyers and tenants that these particulars are a guide and act as information only. All our details are given in good faith and believed to be correct at the time of printing but they don't form part of an offer or contract. No Winkworth employee has authority to make or give any representation or warranty in relation to this property. All fixtures and fittings, whether fitted or not are deemed removable by the vendor unless stated otherwise and room sizes are measured between internal wall surfaces, including furnishings.