



CREWYS ROAD, NW2
£799,950 FREEHOLD

An attractive 3-bedroom cottage style family home requiring modernization

Golders Green | 020 8458 8313 | goldersgreen@winkworth.co.uk

3 BEDROOMS/ 2 RECEPTION ROOMS/ 60' REAR GARDEN/ SPACE FOR LOFT EXTENSION/ QUIET STREET ON GOLDERS GREEN AND HAMPSTEAD BOARDSERS/ CHAIN FREE/ COUNCIL TAX BACND: E /EPC:



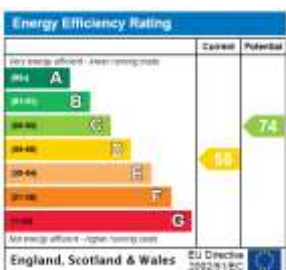
DESCRIPTION:

We are delighted to offer this attractive cottage style 3-bedroom terraced house located in Child's Hill and within easy access of Golders Green and Hampstead. The property has been much loved but would benefit from complete modernization and has great potential for further expansion both on the ground floor and the loft area.

Crewys Road is located off Nant Road and is closely situated to Child's Hill Park. It is nearby the recently David Lloyd gym on Cricklewood Lane and the increasingly popular Thameslink stations both at Cricklewood Lane and at Brent Cross West.

Accommodation comprises 2 reception rooms plus a kitchen and sun lounge on the ground plus 3 bedrooms and a bathroom on the 1st floor. There is no doubt that with some modernization this will make a super family home, highly convenient for local amenities and at a reasonable price.

Viewing is highly recommended.



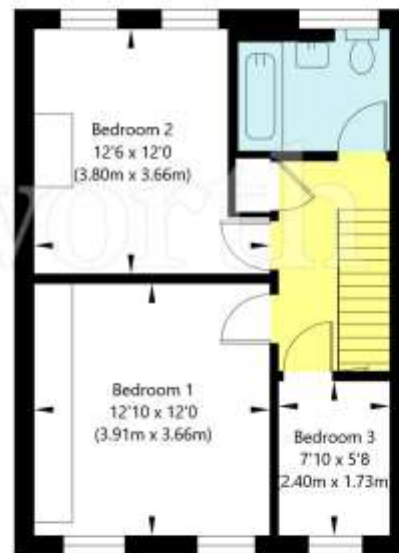
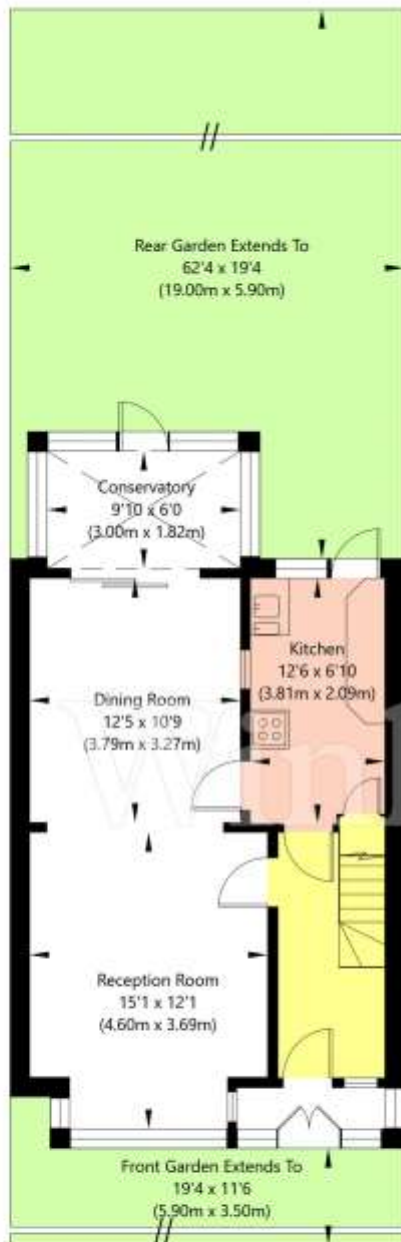
Tenure: Freehold

Council Tax Band: E

Where no figures are shown, we have been unable to ascertain the information. All figures that are shown were correct at the time of printing.



Crewys Road, London NW2 2AU



First Floor
GROSS INTERNAL FLOOR AREA
APPROX. 43.39 SQ M / 467 SQ FT

Ground Floor
GROSS INTERNAL FLOOR AREA
APPROX. 52.47 SQ M / 565 SQ FT

APPROXIMATE GROSS INTERNAL FLOOR AREA 95.86 SQ M / 1032 SQ FT

THIS FLOOR PLAN IS FOR ILLUSTRATIVE PURPOSES ONLY AND
SHOULD BE USED FOR THIS PURPOSE BY PROSPECTIVE APPLICANTS AS ITS NOT TO SCALE.

(c) AMBERSHORE PIX LIMITED / PHOTO - VIDEO - FLOOR PLANS / 0800 999 1577 / WWW.AMERSHOREPIX.CO.UK