



Carroll Avenue

Ferndown, BH22 8BW

Guide Price £1,000,000

Winkworth



GUIDE PRICE £1,000,000 FREEHOLD

This imposing four double bedroom detached house is approached via electric gates and sits proudly on a secluded plot in arguably one of Ferndown's most sought after locations.

Carroll Avenue is a prestigious private road, conveniently situated within 600 metres of Ferndown town centre. This wonderful home is immaculate throughout and has vast amounts of reception space to complement four double bedrooms, three of which are en-suite.

Further benefits include a detached double garage with a mezzanine level above that would make an ideal home office or games room, secure off road parking for multiple vehicles and NO ONWARD CHAIN.

Four Double Bedrooms
Kitchen/Diner
Gated Driveway For Several Vehicles
Sought After Location
Double Garage With Mezzanine Level Above
Guest Cloakroom
No Onward Chain
Lots Of Reception Space
Three En-suite Bedrooms
Conservatory
Secluded Grounds

EPC D | Council Tax Band G

01202 434365

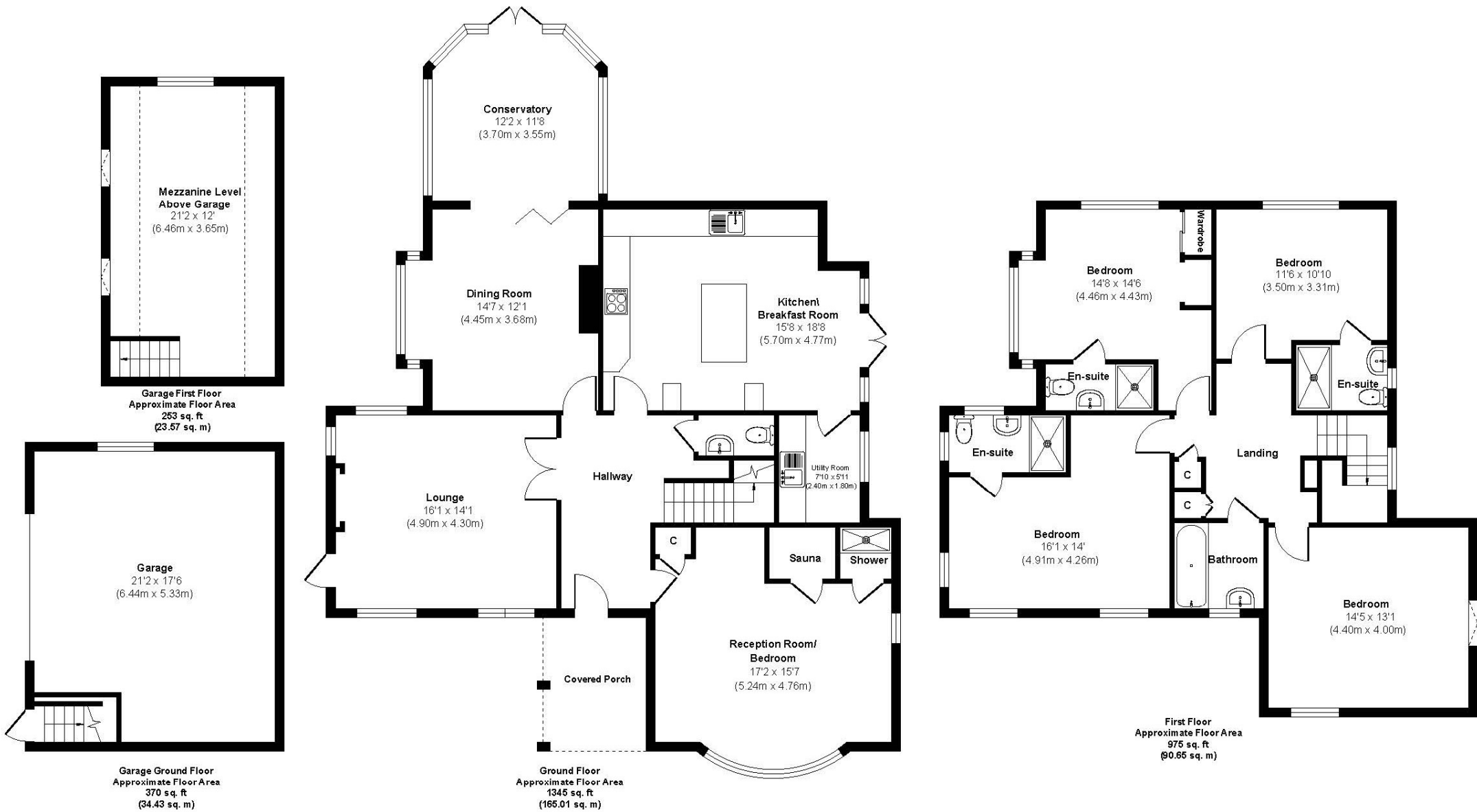
ferndown@winkworth.co.uk







Carroll Avenue



Approx. Gross Internal Floor Area 2943 sq. ft / 313.66 sq. m
 Illustration for identification purposes only, measurements approximate and not to scale.



LOCATION

Carroll Avenue is an extremely sought after location, conveniently positioned for Ferndown town centre and Ferndown Championship Golf Course. The clubhouse of the golf course is located approximately 900 metres away if walking and the town centre of Ferndown is located approximately 600 metres away and offers a range of shopping, leisure and recreational facilities. There are nearby bus routes to Wimborne, Bournemouth and Poole, all of which have a range of amenities. Award winning sandy beaches are just twenty minutes away and the A31 provides quick access to the New Forest, Southampton, London and beyond for the commuter by car.

Winkworth Ferndown

406 Ringwood Road, Ferndown, Dorset, BH22 9AU

01202 434365 | ferndown@winkworth.co.uk

winkworth.co.uk/ferndown

Winkworth